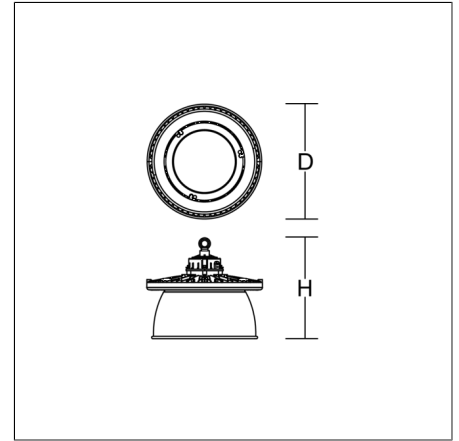




Highbay luminaires
4051859752905
D 360, H 318

Ceiling mounting, Suspension cable/chain,
Wall (surface)
black



Round highbay luminaire for chain or cable suspension. Robust housing made of die-cast aluminium with eye ring, powder coated. Vertical cooling ribs ensure constant heat dissipation for optimal thermal management. Diffuser made of clear, non-reflecting, single pane safety glass (toughened glass). Reflector made of matt aluminium. Primary light control with high-performance wide-area LEDs and reflector made of matt aluminium to limit glare. Easy to install thanks to 1-point suspension. Suitable for chain or steel cable suspension (to be provided on site). With power cord (1.5 m). Dimming range 10% to 100%. Ceiling- and wall-mounting bracket available as accessory. Luminaire with limited surface temperature in accordance with EN 60598-2-24 for use in environments in which a deposit of conductive dust on the luminaire can be expected. Qualified for use in the food and drink industry.

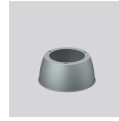
Product specifications

Diameter D	360 mm
Height H	318 mm
Weight	5.793 kg
Light source	LED
Colour temperature	4000 K
Rated luminous flux	16900 lm
System power	120 W
System efficiency	141 lm/W
Glare evaluation UGR (4H 8H)	25,1
Beam angle	87°
Rated life	50000 h (L80/B10)
Colour rendering index (CRI)	80
Colour tolerance	5
Photobiological safety according to EN 62471	Risk group 1
Driver	Converter, dimmable
Control	DALI
Voltage	230 - 240 V / 50 Hz, 60 Hz
Luminaires on B10A fuse	3
Luminaires on B16A fuse	4
Luminaires on C10A fuse	5
Luminaires on C16A fuse	8
Inrush current / Inrush current duration	75 A / 200 µs
CIE Flux Code / CEN Flux Code	71 94 99 100 100
Type of protection	IP 65
Protection class	I
Filament test	960 °C
Impact resistance	IK09
Ambient temperature	-30 °C ... + 50 °C
Safety marks	D-mark
Conformity mark	CE

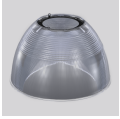
Accessories



982817.003
Ceiling and wall mounting bracket



982114.004
Reflector: aluminium



982115.000
Refractor: plastic