



# MASTER LEDtube InstantFit HF T5

## MAS LEDtube HF 1500mm HO 26W 830 T5 OE

The Philips MASTER LEDtube integrates a LED light source into a traditional fluorescent form factor. Its unique design creates a perfectly uniform visual appearance, which cannot be distinguished from traditional fluorescent. These T5 lighting tubes are the right choice for absolute performance and are designed to stand up to everyday conditions. Unparalleled savings thanks to low energy consumption and an exceptionally long lifetime make these T5 LED tubes the choice for every demanding application.

### Product data

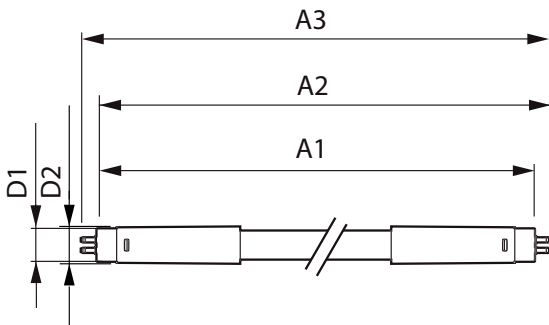
General Information		Operating and Electrical	
Cap-Base	G5 [G5]	Line Frequency	20K to 140K Hz
Nominal lifetime	60,000 hour(s)	Input Frequency	20K to 140K Hz
Switching Cycle	50,000	Power Consumption	26 W
Lighting Technology	LED	Starting Time (Nom)	0.5 s
Flux measurement reference	Sphere	Warm-up time to 60% light	0.5 s
		Power Factor (Fraction)	0.9
		Voltage (Nom)	60-120 V
Light Technical		Temperature	
Color Code	830 [CCT of 3000K]	Ambient temperature range	-20 °C to 45 °C
Beam Angle (Nom)	200 degree(s)	T-Case Maximum (Nom)	50 °C
Luminous Flux	3,700 lumen		
Color Designation	White (WH)	Controls and Dimming	
Correlated Color Temperature (Nom)	3000 K	Dimmable	Yes - Check ballast compatibility
Luminous Efficacy (rated) (Nom)	142.00 lm/W		
Color Consistency	<6	Mechanical and Housing	
Color rendering index (CRI)	80	Bulb Finish	Frosted
LLMF At End Of Nominal Lifetime (Nom)	70 %		

# MASTER LEDtube InstantFit HF T5

Bulb Material	Glass
Product Length	1,500 mm
Bulb Shape	Tube, double-ended
<b>Approval and Application</b>	
Energy Saving Product	Yes
Approval Marks	RoHS compliance TUV CE marking KEMA Keur certificate
Energy Consumption kWh/1000 h	26 kWh
EPREL Registration Number	1,384,143
CE mark	Yes
EU RoHS compliant	Yes

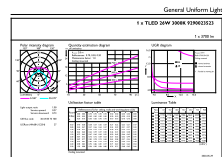
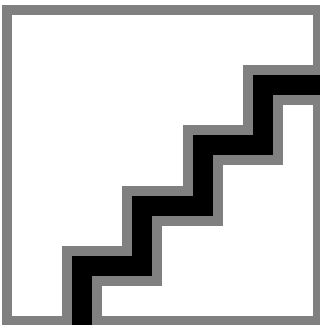
<b>Product Data</b>	
Full product code	871869974957600
Order product name	MAS LEDtube HF 1500mm HO 26W 830 T5 OE
Order code	929002352302
Numerator - Quantity Per Pack	1
Numerator - Packs per outer box	10
Material number (12NC)	929002352302
Full product name	MAS LEDtube HF 1500mm HO 26W 830 T5 OE
EAN/UPC - Case	8718699749583

## Dimensional drawing



Product	D1	D2	A1	A2	A3
MAS LEDtube HF 1500mm HO 26W 830 T5 OE	15.5 mm	19 mm	1,449 mm	1,456 mm	1,463 mm

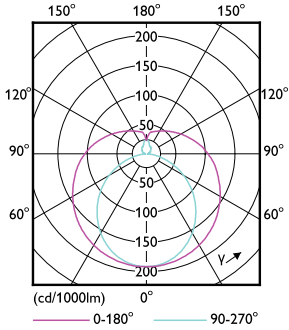
## Photometric data



Spectral Power Distribution Colour - MAS LEDtube HF 1500mm HO 26W 830 T5 OE

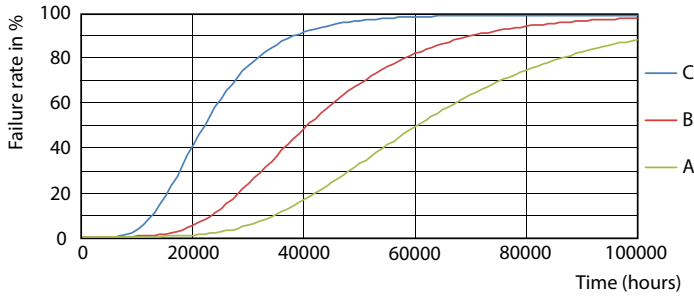
# MASTER LEDtube InstantFit HF T5

## Photometric data

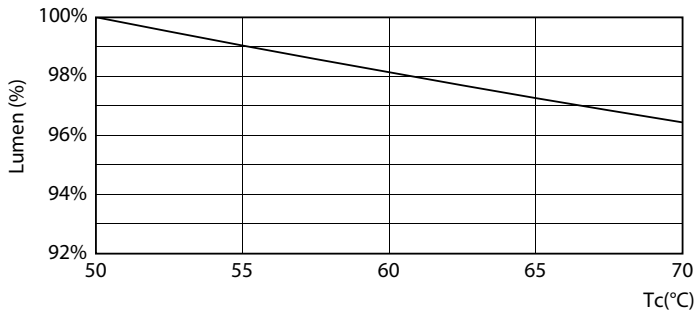


Light Distribution Diagram - MAS LEDtube HF 1500mm HO 26W 830 T5 OE

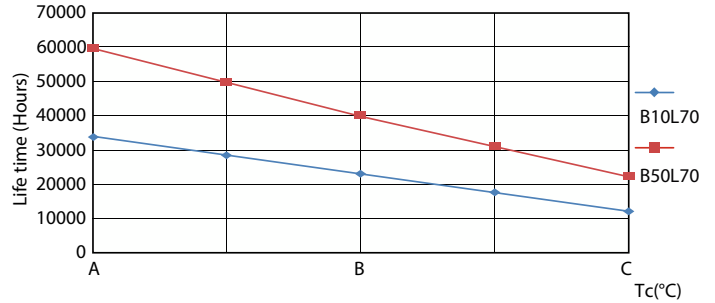
## Lifetime



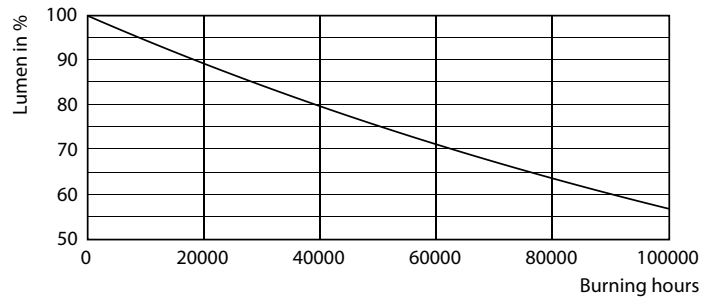
Life Expectancy Diagram - MAS LEDtube HF 1500mm HO 26W 830 T5 OE



Lumen Maintenance Diagram - MAS LEDtube HF 1500mm HO 26W 830 T5 OE



Life Expectancy Diagram - MAS LEDtube HF 1500mm HO 26W 830 T5 OE



Lumen Maintenance Diagram - MAS LEDtube HF 1500mm HO 26W 830 T5 OE

# MASTER LEDtube InstantFit HF T5

## Lifetime



Life Expectancy Diagram - MAS LEDtube HF 1500mm HO 26W 830 T5 OE

