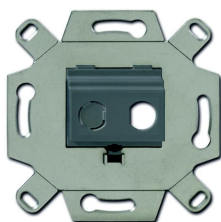


PRODUCT-DETAILS

0262/13-500

0262/13-500 Flush Mounted Inserts SAT 2 gang
grey



General Information

Extended Product Type	0262/13-500
Product ID	2CKA000230A0438
EAN	4011395167731
Catalog Description	0262/13-500 Flush Mounted Inserts SAT 2 gang grey
Long Description	Suitable for telephone connection unit cover plates 2539-21x and 1766-xxx. To support 1 or 2 jacks. For trunk systems, flush-mounted wall boxes and underfloor systems. Without cover plate. Without claws.

Installation

Instructions and Manuals	No document needed
--------------------------	--------------------

Technical

Data Sheet, Technical Information	No document needed
Application	SAT
Mounting Type	Flush Mounted
Type of Fastening	Mounting with Screw
Type of Indicator	Without indication field
Outlet Orientation	Straight
Surface Finishing	Matt
Material	Metal
RAL Number	RAL 7005 - Mouse Grey

Color	grey
Application Function	Data Communication / Multimedia

Environmental

Degree of Protection	IP20
RoHS Status	Following EU Directive 2011/65/EU and Amendment 2015/863 July 22, 2019
RoHS Information	2CKA200000E0055
REACH Declaration	2CKA309999E9999

Dimensions

Product Net Width	71 mm
Product Net Height	17.3 mm
Product Net Depth / Length	71 mm
Product Net Weight	28 g
Built-In Depth (t ₂)	32 mm

Ordering

Minimum Order Quantity	1 piece
Package Level 1 Units	bag 1 piece
Package Level 1 Gross Weight	28 g
Customs Tariff Number	85389099
Country of Origin	Germany (DE)

Certificates and Declarations

Declaration of Conformity - CE	2CKA200000E0055
--------------------------------	-----------------

Classifications

ETIM 8	EC000018 - Insert/cover for communication technology
ETIM 9	EC000018 - Insert/cover for communication technology
WEEE Category	5. Small Equipment (No External Dimension More Than 50 cm)
WEEE B2C / B2B	Business To Consumer
CN8	8538 90 99
eClass	V11.0 : 27144049

Categories

Low Voltage Products and Systems → Wiring Accessories - Light Switch Ranges → Flush Mounted Inserts → Multimedia

