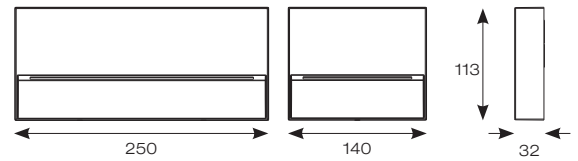


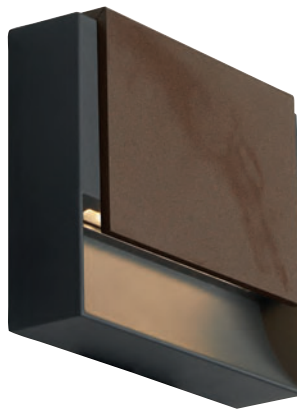
Galia Mini and Maxi



- Surface mounting ultra-slim low level square pathway light with downward light suitable for residential, hospitality and commercial applications
- Die-cast aluminium construction with textured graphite paint finish
- Two sizes available; Mini and Maxi
- Push-fit loop-in, loop-out terminals for ease and speed of installation
- Selectable CCT between 3000K and 4000K
- Modern concrete and rust cover options available
- Non-dimmable



Mini



Galia Mini fitted with
Rust cover option



Galia Mini fitted with
Concrete cover option



Maxi

INPUT	HERTZ	TEMP	LIFETIME (HRS)	CRI	SDCM	BEAM ANGLE	CLASS	IP	IK
230V	50/60Hz	-20°C to 40°C	L70 B50 59,000	Ra 80	6	20°/100°	1	IP65	IK09

CODE	DESCRIPTION	WATTAGE	CCT	LUMENS	LM/W	TRADE
AGALIA/MINI	Mini - CCT Selectable					£78.00
AGALIA/MINI/CONC	Mini - CCT Selectable - Concrete	4W		117lm (4000K)	15lm (4000K)	£103.00
AGALIA/MINI/RUST	Mini - CCT Selectable - Rust		3000K/4000K			£97.00
AGALIA/MAXI	Maxi - CCT Selectable					£115.00
AGALIA/MAXI/CONC	Maxi - CCT Selectable - Concrete	8W		220lm (4000K)	27lm (4000K)	£166.00
AGALIA/MAXI/RUST	Maxi - CCT Selectable - Rust					£159.00