

# MASTER Value LEDtube Universal T8

## MAS LEDtube VLE UN 1200mm UO 15.5W865 T8

The new Philips MASTER Value LEDtube Universal T8 brings ease and simplicity to your lighting project. That's because you do not need to match the driver technology anymore: a unique design enables the Philips MASTER Value LEDtube Universal T8 to directly fit in luminaires operating on either electromagnetic ballasts or HF electronic ballasts or mains power connection. It is so simple to operate and you no longer need to stock two types of tubes! Perfectly safe, reliable & easy to install Philips MASTER Value LEDtube Universal T8 is the ideal alternative to standard fluorescent tubes to maximize value over lifetime with high energy saving and lower maintenance costs.

### Product data

General Information	
Cap-Base	G13 [Medium Bi-Pin Fluorescent]
Nominal lifetime	60,000 hour(s)
Switching Cycle	50,000
Lighting Technology	LED
Flux measurement reference	Sphere

Light Technical	
Color Code	865 [CCT of 6500K]
Beam Angle (Nom)	190 degree(s)
Luminous Flux	2,500 lumen
Color Designation	Cool Daylight
Correlated Color Temperature (Nom)	6500 K
Luminous Efficacy (rated) (Nom)	161 lm/W
Color Consistency	<6
Color rendering index (CRI)	80

LLMF At End Of Nominal Lifetime (Nom) 70 %	
--	--

Operating and Electrical	
Line Frequency	50 to 60 Hz
Input Frequency	50 to 60 Hz
Power Consumption	15.5 W
Lamp Current (Nom)	75 mA
Starting Time (Nom)	0.5 s
Warm-up time to 60% light	0.5 s
Power Factor (Fraction)	0.9
Voltage (Nom)	220-240 V

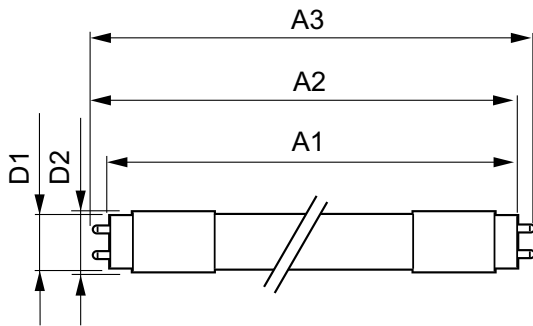
Temperature	
Ambient temperature range	-20 °C to 45 °C
T-Case Maximum (Nom)	55 °C

# MASTER Value LEDtube Universal T8

Controls and Dimming	
Dimmable	No
Mechanical and Housing	
Bulb Finish	Frosted
Bulb Material	Glass
Product Length	1,200 mm
Bulb Shape	Tube, double-ended
Approval and Application	
Energy Saving Product	Yes
Approval Marks	RoHS compliance TUV CE marking KEMA Keur certificate
Energy Consumption kWh/1000 h	16 kWh
EPREL Registration Number	403,660
CE mark	Yes

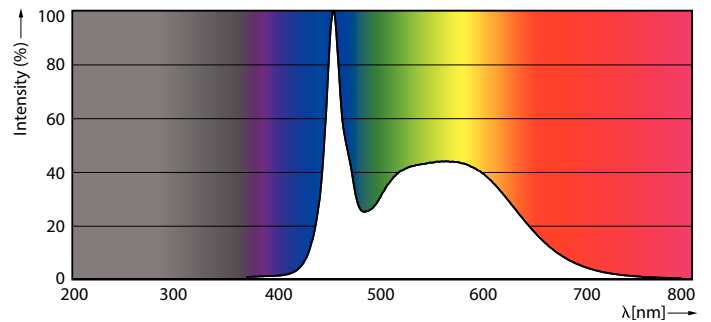
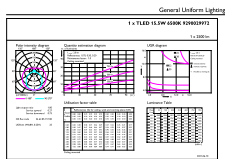
EU RoHS compliant	Yes
Product Data	
Full product code	871951431672000
Order product name	MAS LEDtube VLE UN 1200mm UO 15.5W865 T8
Order code	929002997202
Numerator - Quantity Per Pack	1
Numerator - Packs per outer box	10
Material number (12NC)	929002997202
Full product name	MAS LEDtube VLE UN 1200mm UO 15.5W865 T8
EAN/UPC - Case	8719514316737

## Dimensional drawing



Product	D1	D2	A1	A2	A3
MAS LEDtube VLE UN 1200mm UO 15.5W865 T8	26 mm	28 mm	1,199 mm	1,205 mm	1,213 mm

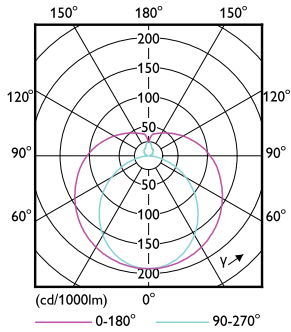
## Photometric data



Spectral Power Distribution Colour - MAS LEDtube VLE UN 1200mm UO 15.5W865 T8

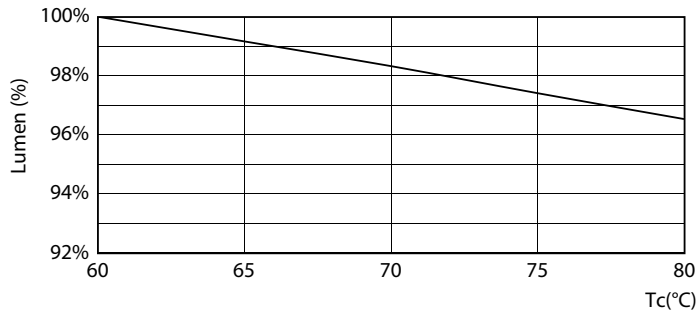
# MASTER Value LEDtube Universal T8

## Photometric data

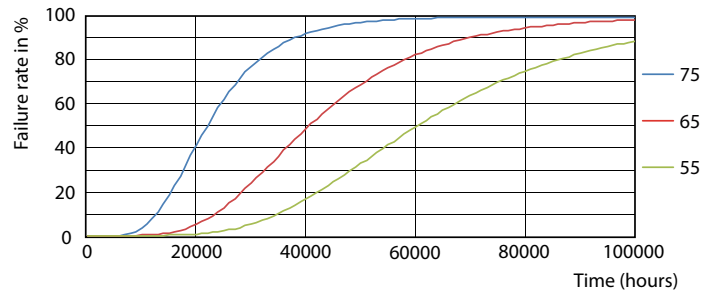


Light Distribution Diagram - MAS LEDtube VLE UN 1200mm UO 15.5W865 T8

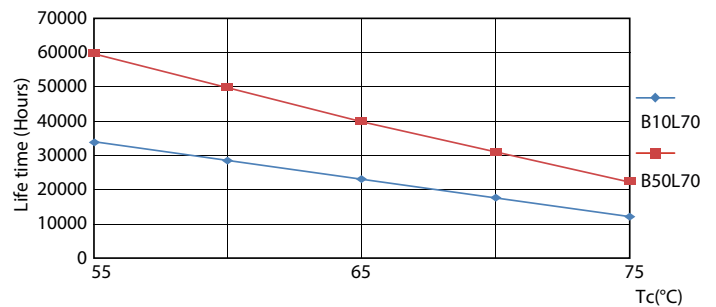
## Lifetime



Lumen Maintenance Diagram - MAS LEDtube VLE UN 1200mm UO 15.5W865 T8



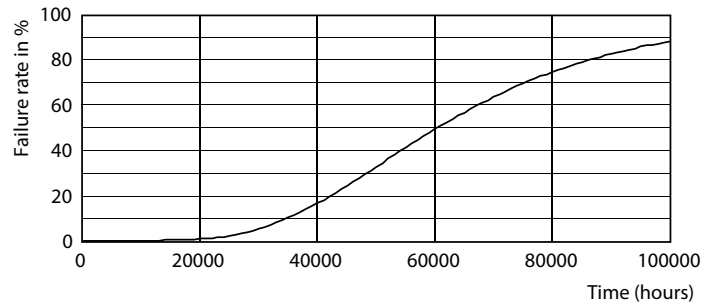
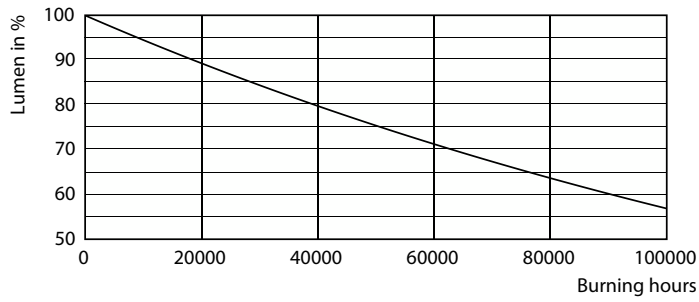
Life Expectancy Diagram - MAS LEDtube VLE UN 1200mm UO 15.5W865 T8



Life Expectancy Diagram - MAS LEDtube VLE UN 1200mm UO 15.5W865 T8

# MASTER Value LEDtube Universal T8

## Lifetime



Lumen Maintenance Diagram - MAS LEDtube VLE UN 1200mm UO 15.5W865 T8

Life Expectancy Diagram - MAS LEDtube VLE UN 1200mm UO 15.5W865 T8

