

# CorePro LED PLL

## CorePro LED PLL Mains 24W 840 4P

Philips CorePro LED PLL is the ideal uplamping solution for downlights & luminaires in a wide range of general lighting applications. It integrates a LED light source into a traditional fluorescent form factor to offer superb energy savings over a lifetime that's twice as long as fluorescent alternatives.

### Product data

General Information	
Cap-Base	2G11 [2G11]
EU RoHS compliant	Yes
Nominal lifetime	30,000 hour(s)
Switching Cycle	200,000
Lighting Technology	LED
Flux measurement reference	Sphere
Brand	Philips

Light Technical	
Color Code	840 [CCT of 4000K]
Beam Angle (Nom)	160 degree(s)
Luminous Flux	3,400 lumen
Color Designation	Cool White (CW)
Correlated Color Temperature (Nom)	4000 K
Luminous Efficacy (rated) (Nom)	141 lm/W
Color Consistency	<6
Color rendering index (CRI)	80
LLMF At End Of Nominal Lifetime (Nom)	70 %

Operating and Electrical	
Line Frequency	50 to 60 Hz
Input Frequency	50 to 60 Hz

Power Consumption	24 W
Lamp Current (Nom)	127 mA
Starting Time (Nom)	0.5 s
Warm-up time to 60% light	0.5 s
Power Factor (Fraction)	0.9
Voltage (Nom)	220-240 V

Temperature	
Ambient temperature range	-20 °C to 45 °C
T-Case Maximum (Nom)	75 °C

Controls and Dimming	
Dimmable	No

Mechanical and Housing	
Bulb Finish	Frosted
Bulb Material	Glass
Product Length	500 mm
Bulb Shape	Tube, single-ended

Approval and Application	
Energy Saving Product	Yes

# CorePro LED PLL

Approval Marks	RoHS compliance TUV CE marking KEMA Keur certificate
Energy Consumption kWh/1000 h	24 kWh
EPREL Registration Number	1,370.830
<b>Product Data</b>	
Full product code	872016915713200
Order product name	CorePro LED PLL Mains 24W 840 4P
Order code	929003592902

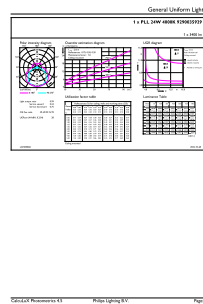
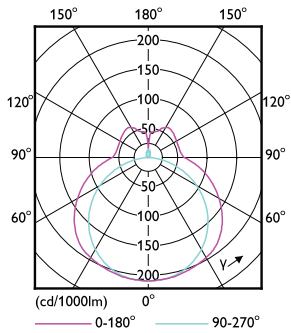
Numerator - Quantity Per Pack	1
Numerator - Packs per outer box	10
Material number (12NC)	929003592902
Net weight	0.192 kg
Full product name	CorePro LED PLL Mains 24W 840 4P
EAN/UPC - Case	8720169157149

## Dimensional drawing

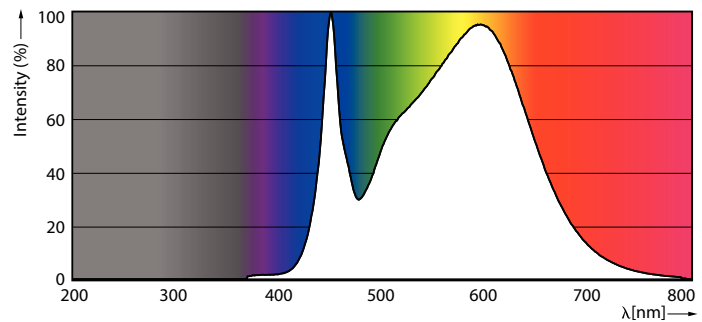


Product	D1	D2	A1	A2	A3
CorePro LED PLL Mains 24W 840 4P	17 mm		453 mm	528 mm	535 mm

## Photometric data



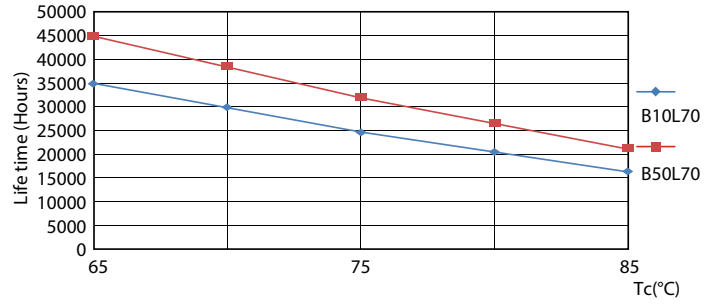
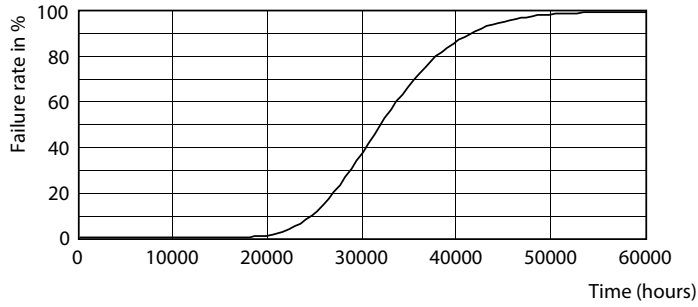
## Light Distribution Diagram



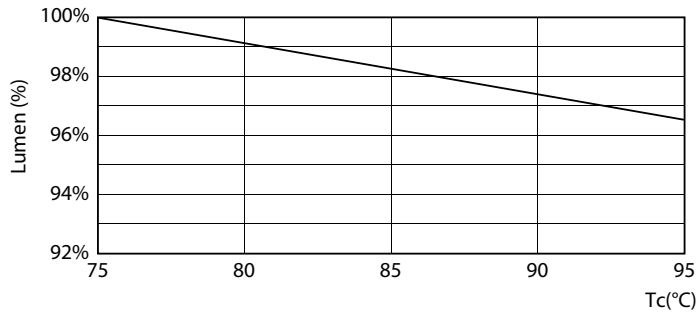
## Spectral Power Distribution Colour

# CorePro LED PLL

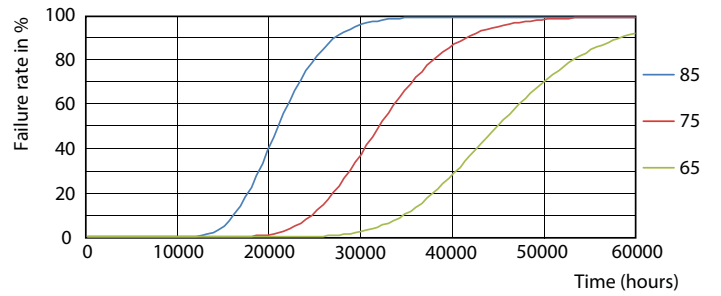
## Lifetime



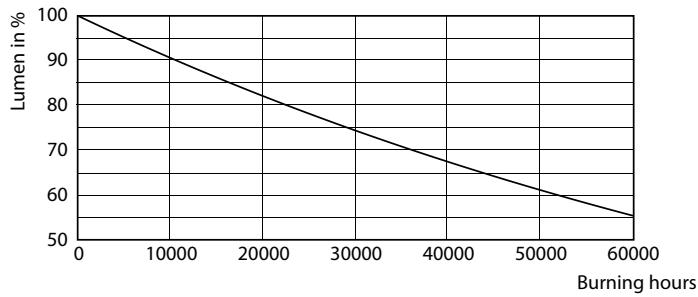
Life Expectancy Diagram - CorePro LED PLL Mains 24W 840 4P



Life Expectancy Diagram



Lumen Maintenance Diagram



Life Expectancy Diagram

Lumen Maintenance Diagram - CorePro LED PLL Mains 24W 840 4P

## CorePro LED PLL

