



Highbay EcoMax G2

- Cost effective highbay solution
- Elegant slim design
- Improved efficacy up to 130 lm/W
- Five lumen packages, up to 31,200 lm
- Narrow beam versions available (200+240W)
- Reflectors, bracket and IP68 connector available as accessory



Specifications

Item Code	Item Description	Equivalent to (W)	Power (W)	Lumen	Efficacy (lm/W)	CCT (K)	Beam angle	Weight (kg/pc)
On-Off								
545001047200	LEDHighbay-E2 80W-840-W	HID 250W	80	10400	130	4000	90°	1.74
545001047400	LEDHighbay-E2 80W-857-W	HID 250W	80	10400	130	5700	90°	1.74
545001047600	LEDHighbay-E2 120W-840-W	HID 400W	120	15600	130	4000	90°	2.41
545001047800	LEDHighbay-E2 120W-857-W	HID 400W	120	15600	130	5700	90°	2.41
545001048000	LEDHighbay-E2 150W-840-W	HID 400W	150	19500	130	4000	90°	2.41
545001048200	LEDHighbay-E2 150W-857-W	HID 400W	150	19500	130	5700	90°	2.41
545001048300	LEDHighbay-E2 200W-840-N	HID 400W HO	200	26000	130	4000	65°	3.34
545001048400	LEDHighbay-E2 200W-840-W	HID 400W HO	200	26000	130	4000	90°	3.34
545001048600	LEDHighbay-E2 200W-857-W	HID 400W HO	200	26000	130	5700	90°	3.34
545001048700	LEDHighbay-E2 240W-840-N	HID 600W	240	31200	130	4000	65°	3.34
545001048800	LEDHighbay-E2 240W-840-W	HID 600W	240	31200	130	4000	90°	3.34
545001049000	LEDHighbay-E2 240W-857-W	HID 600W	240	31200	130	5700	90°	3.34

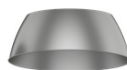
Accessories



545098006100
LEDHighbay-E2 Reflector-
Rd407



545098006200
LEDHighbay-E2 Reflector-
Rd507



545098006300
LEDHighbay-E2 Reflector-
Rd602



545098006000
LEDHighbay-E2 Bracket-L249



543098021900
LEDFixture-IP68-Connector-
Kit-3

Reflector Rd407 (545098006100) fits 80W versions, Reflector Rd507 (545098006200) fits 120W and 150W versions and Reflector Rd602 (545098006300) fits 200W and 240W versions.

Technical Specifications	
Lifetime (L70)	50,000 h
Lifetime (L80)	30,000 h
On-/Off-cycles	100,000
Colour consistency (SDCM)	4
Dimmability	On-Off
Finishing	Grey Pantone 417U
Colour rendering index (CRI)	≥ 80
Degree of protection (IP)	IP65
Impact strength	IK08
Protection class	I
Risk group (EN 62471)	RG1
With control gear	Yes
Glow wire test	850°C
Power factor	≥ 0.9
Surge protection	4 kV

Electrical Supply	
Frequency	50/60 Hz
Nominal voltage	220-240 V
DC input voltage	No
230V Cable length	1 m

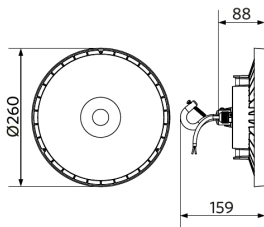
Mechanical Properties	
Housing material	Aluminium
Optical material	Polycarbonate
Cover material	Polycarbonate

Ambient Conditions	
Operating temperature	-30-+50°C
Application temperature	+25°C
Storage environment	-30-+50°C

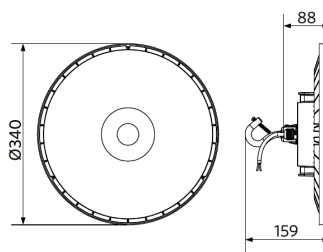


Dimensional Drawing (mm)

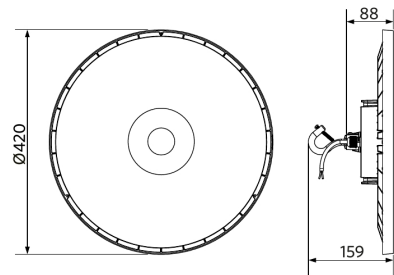
LEDHighbay-E2 80W



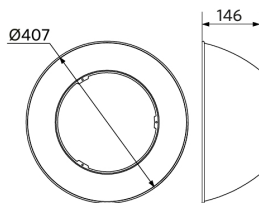
LEDHighbay-E2
120W & 150W



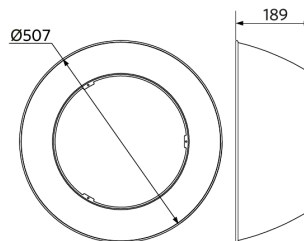
LEDHighbay-E2
200W & 240W



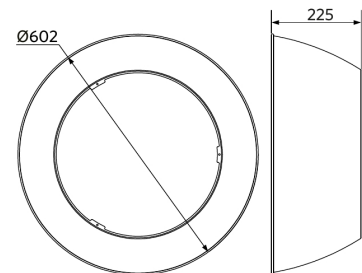
LEDHighbay-E2
Reflector-Rd407



LEDHighbay-E2
Reflector-Rd507



LEDHighbay-E2
Reflector-Rd602



LEDHighbay-E2
Bracket

