



CorePro LED PLL

CorePro LED PLL EM/Mains 16.5W 830 4P

Philips CorePro LED PLL is the ideal uplamping solution for downlights & luminaires in a wide range of general lighting applications. It integrates a LED light source into a traditional fluorescent form factor to offer superb energy savings over a lifetime that's twice as long as fluorescent alternatives.

Product data

General Information		Lamp Current (Nom)	
Cap-Base	2G11 [2G11]		83 mA
EU RoHS compliant	Yes	Starting Time (Nom)	0.5 s
Nominal lifetime	30,000 hour(s)	Warm-up time to 60% light	0.5 s
Switching Cycle	200,000	Power Factor (Fraction)	0.9
Lighting Technology	LED	Voltage (Nom)	220-240 V
Flux measurement reference	Sphere		
Light Technical		Temperature	
Color Code	830 [CCT of 3000K]	Ambient temperature range	-20 °C to 45 °C
Beam Angle (Nom)	160 degree(s)	T-Case Maximum (Nom)	70 °C
Luminous Flux	2,000 lumen		
Color Designation	White (WH)	Controls and Dimming	
Correlated Color Temperature (Nom)	3000 K	Dimmable	No
Luminous Efficacy (rated) (Nom)	121 lm/W		
Color Consistency	<6	Mechanical and Housing	
Color rendering index (CRI)	80	Bulb Finish	Frosted
LLMF At End Of Nominal Lifetime (Nom)	70 %	Bulb Material	Glass
		Product Length	400 mm
		Bulb Shape	Tube, single-ended
Operating and Electrical		Approval and Application	
Line Frequency	50 to 60 Hz	Energy Saving Product	Yes
Input Frequency	50 to 60 Hz	Approval Marks	RoHS compliance TUV CE marking KEMA Keur certificate
Power Consumption	16.5 W		

CorePro LED PLL

Energy Consumption kWh/1000 h	17 kWh
EPREL Registration Number	1,370,827
Product Data	
Full product code	872016915707100
Order product name	CorePro LED PLL EM/Mains 16.5W 830 4P
Order code	929003592602
Numerator - Quantity Per Pack	1

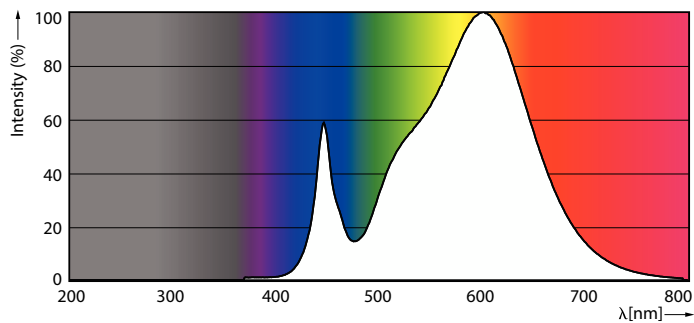
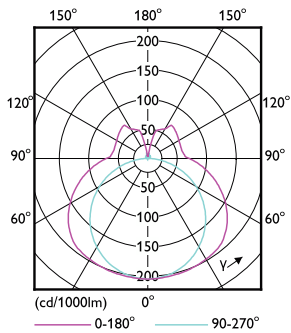
Numerator - Packs per outer box	10
Material number (12NC)	929003592602
Net weight	0.150 kg
Full product name	CorePro LED PLL EM/Mains 16.5W 830 4P
EAN/UPC - Case	8720169157088

Dimensional drawing



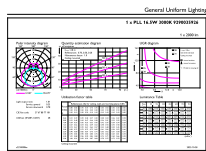
Product	D1	D2	A1	A2	A3
CorePro LED PLL EM/Mains 16.5W 830 4P	17 mm		330 mm	405 mm	412 mm

Photometric data



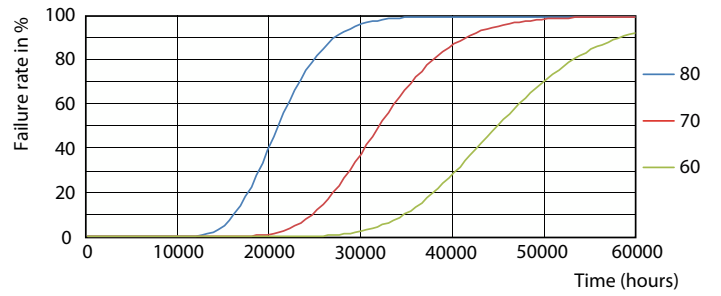
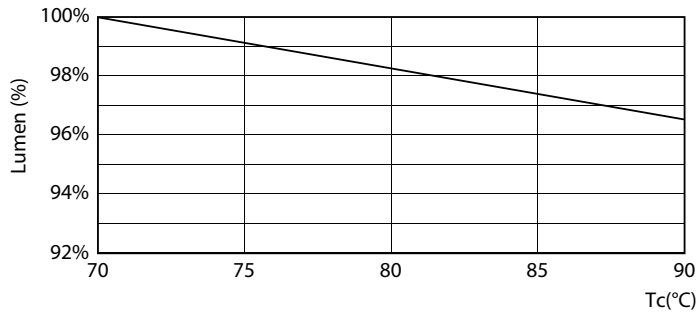
Light Distribution Diagram

Spectral Power Distribution Colour



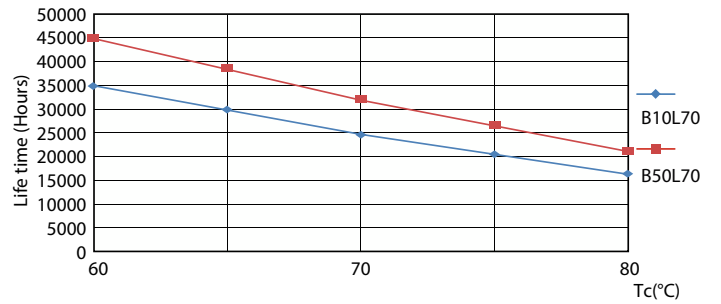
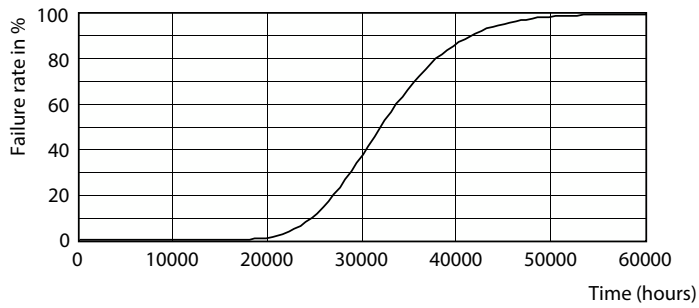
CorePro LED PLL

Lifetime



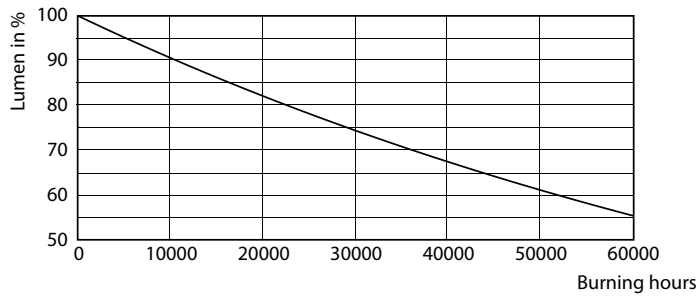
Lumen Maintenance Diagram

Life Expectancy Diagram



Life Expectancy Diagram - CorePro LED PLL EM/Mains 16.5W 830 4P

Life Expectancy Diagram



Lumen Maintenance Diagram - CorePro LED PLL EM/Mains 16.5W 830 4P

CorePro LED PLL

