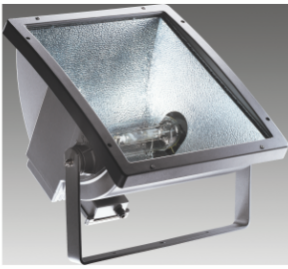


Product Data Sheet

GW84663

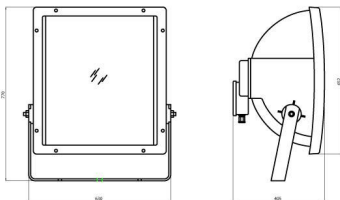
On request



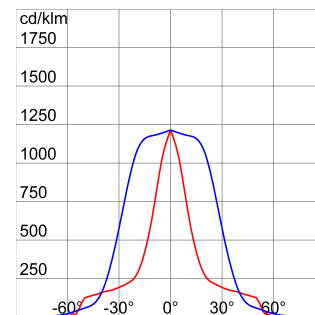
Floodlight in die cast aluminum with electrolytic galvanized bracket and painted the same color as the body. Equipped with graduate scale to facilitate orientation. Separated optical and electrical compartment. Front opening through screws, lamp changing from back screwed door. Flat tempered glass 5mm thickness. Anti-aging silicone gasket. Power input through PG13.5 for cables $\varnothing 6.5 \div 13$ mm. Safety relay input through PG11 for cables $\varnothing 7 \div 10$ mm. Optic in 99.85% polished and anodised aluminium. Electrical component plate in galvanized steel. Tripolar terminal block. Wired version with power factor correction to be used with relative supply unit.

Application	External	IP degree	IP66
Mechanical resistance	IK09	Insulation class	I
Maximum surface exposed to the wind	0.392 m ²	Lateral surface exposed to the wind	0.141 m ²
Minimum distance from the illuminated object	3 m	Weight (kg)	23.5
Colour	Graphite grey	Lamp	MT
Lamp power	2000 W	Lamp current	10.3 A
Lamp holder	E40	Optic	Symmetrical diffused - ULOR: 0%
Electrocod	2433		

DIMENSIONAL



PHOTOMETRIC DISTRIBUTION



TECHNICAL SYMBOLOGY



IP

IP66

IK

IK09



0.392 m²



3 m



STANDARDS/APPROVALS

