



MASTER Value LEDtube Universal T8

MAS LEDtube VLE UN 1500mm UO 23W865 T8

The new Philips MASTER Value LEDtube Universal T8 brings ease and simplicity to your lighting project. That's because you do not need to match the driver technology anymore: a unique design enables the Philips MASTER Value LEDtube Universal T8 to directly fit in luminaires operating on either electromagnetic ballasts or HF electronic ballasts or mains power connection. It is so simple to operate and you no longer need to stock two types of tubes! Perfectly safe, reliable & easy to install Philips MASTER Value LEDtube Universal T8 is the ideal alternative to standard fluorescent tubes to maximize value over lifetime with high energy saving and lower maintenance costs.

Product data

General Information		LLMF At End Of Nominal Lifetime (Nom) 70 %	
Cap-Base	G13 [Medium Bi-Pin Fluorescent]		
Nominal lifetime	60,000 hour(s)		
Switching Cycle	50,000		
Lighting Technology	LED		
Flux measurement reference	Sphere		
Light Technical		Operating and Electrical	
Color Code	865 [CCT of 6500K]	Line Frequency	50 to 60 Hz
Beam Angle (Nom)	190 degree(s)	Input Frequency	50 to 60 Hz
Luminous Flux	3,700 lumen	Power Consumption	23 W
Color Designation	Cool Daylight	Lamp Current (Nom)	106 mA
Correlated Color Temperature (Nom)	6500 K	Starting Time (Nom)	0.5 s
Luminous Efficacy (rated) (Nom)	160 lm/W	Warm-up time to 60% light	0.5 s
Color Consistency	<6	Power Factor (Fraction)	0.9
Color rendering index (CRI)	80	Voltage (Nom)	220-240 V
		Temperature	
		Ambient temperature range	-20 °C to 45 °C
		T-Case Maximum (Nom)	60 °C

MASTER Value LEDtube Universal T8

Controls and Dimming

Dimmable	No
----------	----

Mechanical and Housing

Bulb Finish	Frosted
Bulb Material	Glass
Product Length	1,500 mm
Bulb Shape	Tube, double-ended

Approval and Application

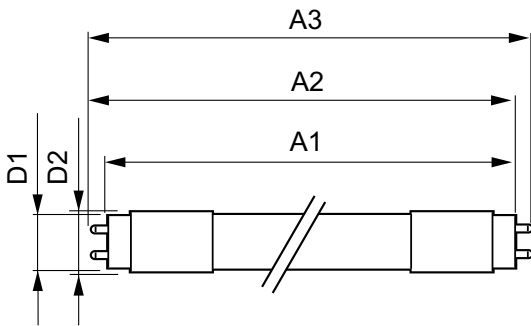
Energy Saving Product	Yes
Approval Marks	RoHS compliance TUV CE marking KEMA Keur certificate
Energy Consumption kWh/1000 h	23 kWh
EPREL Registration Number	403,663
CE mark	Yes

EU RoHS compliant	Yes
-------------------	-----

Product Data

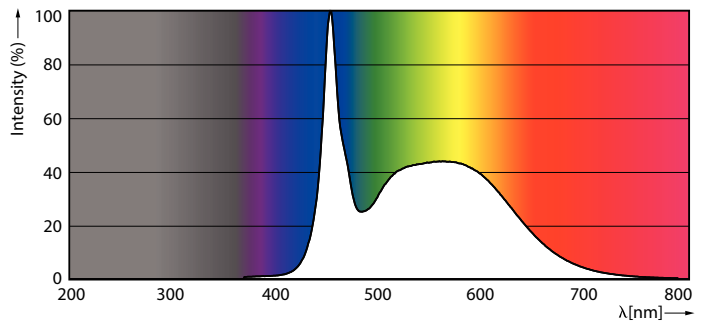
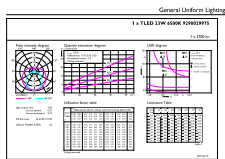
Full product code	871951431678200
Order product name	MAS LEDtube VLE UN 1500mm UO 23W865 T8
Order code	929002997502
Numerator - Quantity Per Pack	1
Numerator - Packs per outer box	10
Material number (12NC)	929002997502
Full product name	MAS LEDtube VLE UN 1500mm UO 23W865 T8
EAN/UPC - Case	8719514316799

Dimensional drawing



Product	D1	D2	A1	A2	A3
MAS LEDtube VLE UN 1500mm UO 23W865 T8	26 mm	28 mm	1,500 mm	1,506 mm	1,514 mm

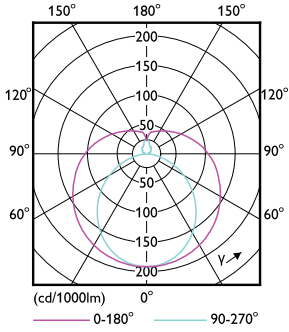
Photometric data



Spectral Power Distribution Colour - MAS LEDtube VLE UN 1500mm UO 23W865 T8

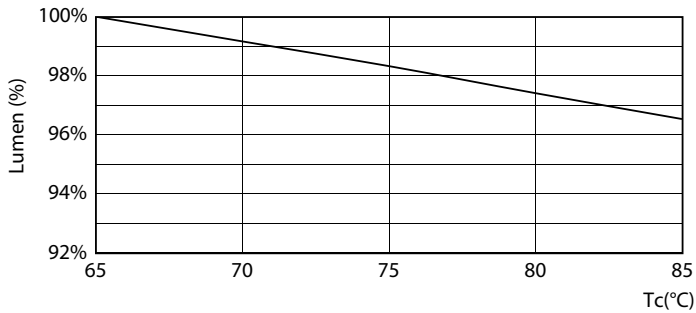
MASTER Value LEDtube Universal T8

Photometric data

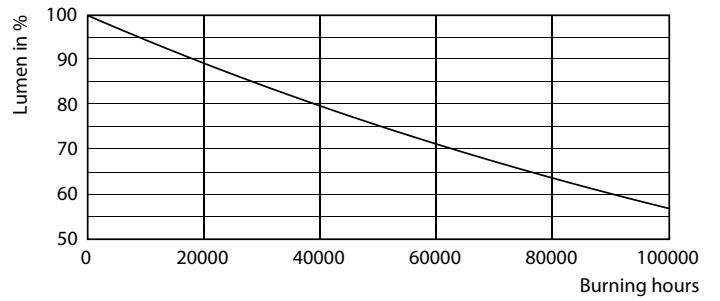


Light Distribution Diagram - MAS LEDtube VLE UN 1500mm UO 23W865 T8

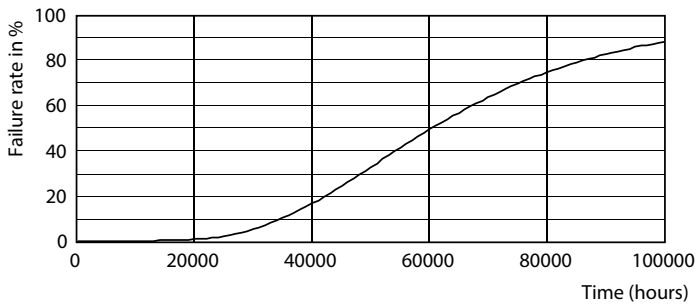
Lifetime



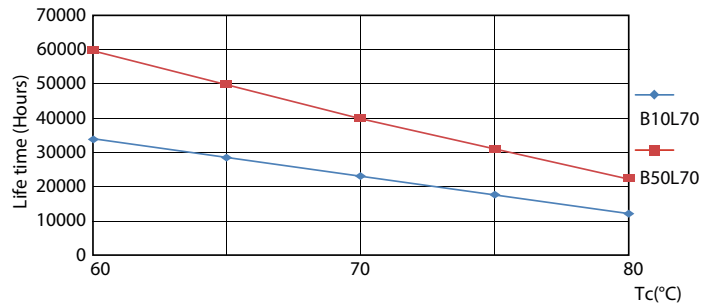
Lumen Maintenance Diagram - MAS LEDtube VLE UN 1500mm UO 23W865 T8



Lumen Maintenance Diagram - MAS LEDtube VLE UN 1500mm UO 23W865 T8



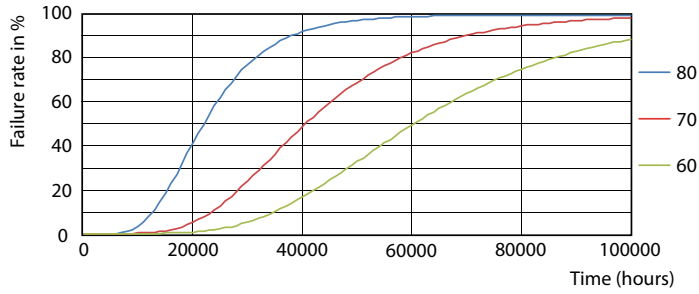
Life Expectancy Diagram - MAS LEDtube VLE UN 1500mm UO 23W865 T8



Life Expectancy Diagram - MAS LEDtube VLE UN 1500mm UO 23W865 T8

MASTER Value LEDtube Universal T8

Lifetime



Life Expectancy Diagram - MAS LEDtube VLE UN 1500mm UO 23W865 T8

