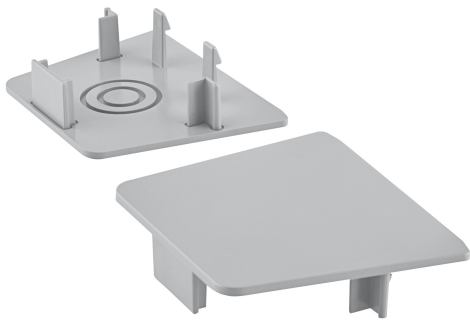


PRODUCT DATASHEET

TruSys® End Cap Energy Rail

TruSys® END CAP ENERGY RAIL | Endcaps for mounting rail



Product benefits

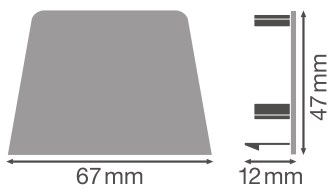
- Simple snap-in mounting of end caps



TECHNICAL DATA

Dimensions & Weight

Length	12 mm
Width	67.00 mm
Height	47 mm
Product weight	21.00 g



Materials & Colors

Product color	Aluminum
Body material	Aluminum

Application & Mounting

Mounting location	Ceiling
-------------------	---------

Certificates & Standards

Ball shot safe	No
----------------	----

DOWNLOAD DATA

Tender texts



Tender documents

LOGISTICAL DATA

Product code	Packaging unit (Pieces/Unit)	Dimensions (length x width x height)	Gross weight	Volume
4058075100411	BAG 2	100 mm x 80 mm x 1 mm	44.00 g	0.01 dm ³

Product code	Packaging unit (Pieces/Unit)	Dimensions (length x width x height)	Gross weight	Volume
4058075100428	Shipping box 6	176 mm x 86 mm x 82 mm	162.00 g	1.24 dm ³

The mentioned product code describes the smallest quantity unit which can be ordered. One shipping unit can contain one or more single products. When placing an order, for the quantity please enter single or multiples of a shipping unit.

DISCLAIMER

Subject to change without notice. Errors and omission excepted. Always make sure to use the most recent release.