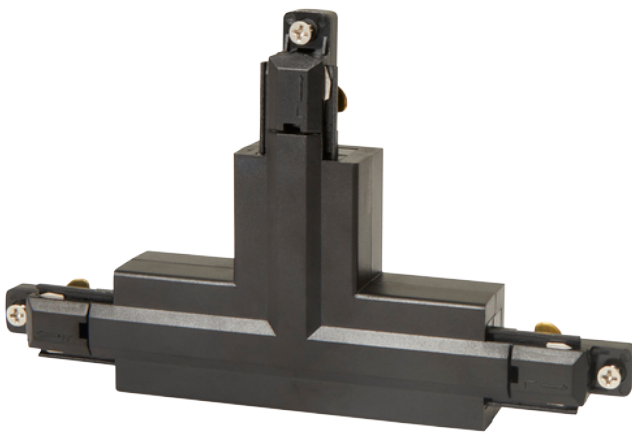




## **APRT/P1/TC/R/1/B**

Primo Single Circuit T Connector Right Earth Outside Black



Primo Single Circuit Track and Accessories

Option of left and right feed for Live end, L and T connectors

Technical Specifications:

Colour / Finish | [Black]

Track Components | Accessories

IP Rating | IP20

Internal / External | Internal

Warranty (Years) | 5

CE Mark | Yes

UKCA Mark | Yes

Length | 164.84

Width | 64.22

Height | 22.3

## Technical Data - ETIM - Light-track (EC000101)

<b>Nominal voltage</b>	220-240 V
<b>Width</b>	64.22 mm
<b>Length</b>	164.84 mm
<b>Height</b>	22.3 mm
<b>Built-in width</b>	64.22 mm
<b>Suitable for suspended mounting</b>	Yes
<b>Number of groups/phases</b>	1
<b>Suitable for bus connection</b>	No
<b>Material</b>	Aluminium
<b>Surface finishing</b>	Matt
<b>Colour</b>	Black
<b>Surface-mounted</b>	Yes
<b>Built-in</b>	No
<b>Bendable</b>	No
<b>Built-in depth</b>	22.3 mm
<b>Protection class</b>	I

Datasheet generated from <https://onetimepim.com> last updated Friday, February 16, 2024 4:45:52 PM