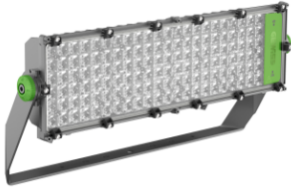


Product Data Sheet

GWP3133DB857

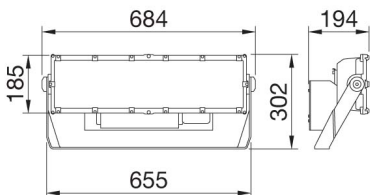
SPATIUM PRO



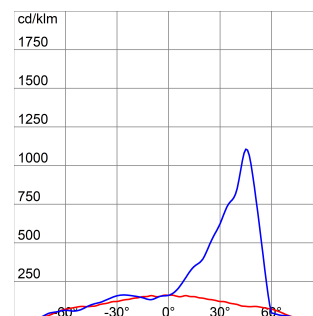
Spatium PRO | 1 is a high-power outdoor LED floodlight suitable for the lighting of outdoor areas such as industrial perimeter areas, pedestrian areas and car parks. The floodlight has a graphite grey finish with trivalent treatment for maximum resistance to oxidation and is equipped with an integrated 'self-cleaning' heat dissipation system. It consists of 1 module, with a bleed and anti-condensation valve, protected from accidental impact. The bracket is made in galvanised steel fixed to the module via screws. The orientation system is enabled by the goniometer integrated into the bracket, which facilitates the pointing phases during installation. The floodlight is available in the following colour temperatures 3,000K, 4,000K or 5,700K and colour rendering CRI>70 (SDCM 5 Step), CRI>80 (SDCM 3 Step). The range also includes 4 types of optics: circular 40°, symmetrical/elliptical optic, and 2 asymmetric optics. The T.I.R.Ex. optic system developed by GEWISS with lenses in PMMA HT (high-transparency), gives complete control over the light beam, allowing for great flexibility for any project design, with high qualitative and quantitative performance. The floodlight is completed with an external power supply unit fixed to the back of the heatsink. The power supply unit, available in the DALI version can be oriented to optimise the heat dissipation depending on the orientation of the motor. It is protected from surges up to 6KV in differential mode and 10KV in common mode.

GENERAL INFORMATION		OPTIC AND ILLUMINATING FEATURES	
Context	Large outdoor lighting areas	Optic	Asymmetric 45°
Luminaire	High power LED floodlight	Unified Glare Rating	ULOR = 0%
Application	Indoor / Outdoor	Lumen output (lm)	40000
Unique digital code (Datamatrix)	Currently not present	Efficacy (lm/W)	100
Colour	Graphite grey	Colour temperature	5700 K
Type of light source	LED	Colour Rendering Index	CRI 80
System power	400 W	Standard Deviation Colour Matching	SDCM = 3
LED Lifetime	L90B10(Tq25°C)>100.000h; L80B10 (Tq25°C)>150.000h	Photobiological Risk Class	-
Weight (kg)	15	Standard	EN 60598-1; EN 60598-2-5; IEC/TR 62778; EN 62493
Warranty	5 years	ELECTRICAL AND LIGHTING FEATURES	
Stocking temperature	-	Supply voltage	220 - 240 V
Operating temperature	-25 +50 °C	Rated frequency (Hz)	50/60 Hz
MATERIALS		Driver	Included
Body	Die-cast aluminium	Driver failure rate	F10 = 90.000h Tq25°C
Shield type	Flat tempered glass 4mm	Overvoltage protection	DM 6 kV / CM 10 kV
Optic	T.I.R.Ex. Optical PMMA HT	Control System	DALI
Gasket	Anti-aging silicone	INSTALLATION AND MAINTENANCE	
Locking Hook	-	Mounting and installation	High-mast lighting - Wall mounting - Ground mounting
External screw	Stainless steel	Tilt	Rotation on bracket with integrated goniometer
Colour	Polyester powder coated	Wiring	Watertight connector between floodlight and power supply unit
STANDARDS AND APPROVALS		Fixing	Bracket
Classification	-	Light source replaceability	By professional
Device with reduced surface temperature	-	Controlgear replaceability	By professional
DIN 18032-3 certification	-	Driver Box	External
IPEA	-	Maximum surface exposed to the wind	0.15 m²
Insulation class	I		
IP degree	IP66		
Mechanical resistance	IK08		
Glow Wire Test	-		

DIMENSIONAL



PHOTOMETRIC DISTRIBUTION



Product Data Sheet

GWP3133DB857

SPATIUM PRO

TECHNICAL SYMBOLOGY



IP
IP66

IK
IK08

GWT
-

STANDARDS/APPROVALS

