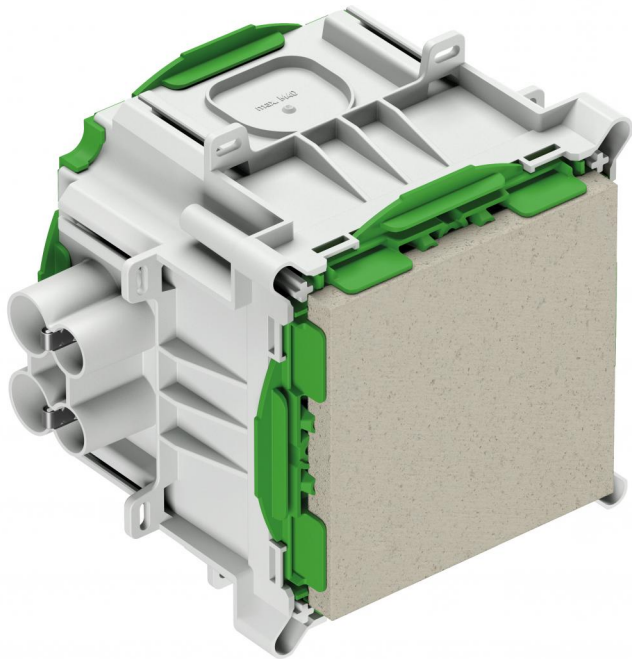


Installation housing

IBTLED 1 E



IBTLED 1 E

Installation housing

Productnumber: 98210002

Dimensions: 177 x 200 x 135 mm

Installation housing, for prefabricated construction, halogen-free, for the installation of LV/HV/LED lights and speakers, announcement and call systems, for the installation of VDE-tested lights to DIN EN 60598 (VDE 0711), and with F or MM marking, with protection class IP30, Rated insulation voltage: 400V AC, Halogen free

maximum installation depth for luminaires, speakers, announcement and call systems: 100 mm, lamp output LED max. 15 W, lamp output halogen max. 25 W, Outlet aperture: Fermacell® plasterboard, variable to max. 100 mm x 100 mm, 8 combi-conduit entries 4 x 16 mm, 4 x 19 mm, integrated conduit stopper and strain relief for conduits 16 mm, 19 mm, adhesive fixing or nail installation, combination conduit insertion and membrane for perforation, Sealing area M16 - M40



Technical Data

electrical characteristics

Rated insulation voltage AC:	400 V
Type of protection:	IP30
Suitable for:	Concrete construction

Colours

Base unit colour:	grey
Cover colour:	green

Dimensions

Width:	177 mm
Length:	200 mm
Height:	135 mm
Inner length:	100 mm
Inner width:	100 mm
Inner height:	125 mm

Material characteristics

Industry quality:	no
Halogen free:	yes
Flammability class according with UL94:	HB
Glow-wire flammability according to EN 60695-2-11:	650 °C

mechanical properties

Type of fastening:	adhesive fixing or nail installation
--------------------	--------------------------------------

Ambient conditions

max. relative humidity 25°C:	- %
max. relative humidity 40°C:	50 %
Min. ambient temperature:	-25 °C

Ambient conditions

Max. ambient temperature:	60 °C
24h ambient temperature:	35 °C

Material

Base unit material:	Polypropylene
Cover material:	Polypropylene