



# MASTER LEDtube Mains T5

## MAS LEDtube 1200mm HO 26W 840 T5

The new Philips Master LEDtube Mains T5 brings simplicity to your lighting project. You don't need to pay attention to the driver technology anymore. Thanks to a unique design, Philips MASTER LEDtube Mains T5 installs in luminaires operating on mains power connection. So simple to operate! . Perfectly safe, reliable & easy to install Philips MASTER LEDtube Mains T5 is the ideal alternative to standard fluorescent tubes to maximize value over lifetime with high energy saving and lower maintenance costs.

### Product data

| General Information        |                |
|----------------------------|----------------|
| Cap-Base                   | G5 [G5]        |
| Nominal lifetime           | 50,000 hour(s) |
| Switching Cycle            | 200,000        |
| Lighting Technology        | LED            |
| Flux measurement reference | Sphere         |

| Light Technical                       |                    |
|---------------------------------------|--------------------|
| Color Code                            | 840 [CCT of 4000K] |
| Beam Angle (Nom)                      | 200 degree(s)      |
| Luminous Flux                         | 3,900 lumen        |
| Color Designation                     | Cool White (CW)    |
| Correlated Color Temperature (Nom)    | 4000 K             |
| Luminous Efficacy (rated) (Nom)       | 150 lm/W           |
| Color Consistency                     | <6                 |
| Color rendering index (CRI)           | 80                 |
| LLMF At End Of Nominal Lifetime (Nom) | 70 %               |

| Operating and Electrical  |             |
|---------------------------|-------------|
| Line Frequency            | 50 to 60 Hz |
| Input Frequency           | 50 to 60 Hz |
| Power Consumption         | 26 W        |
| Lamp Current (Nom)        | 125 mA      |
| Starting Time (Nom)       | 0.5 s       |
| Warm-up time to 60% light | 0.5 s       |
| Power Factor (Fraction)   | 0.92        |
| Voltage (Nom)             | 220-240 V   |

| Temperature               |                 |
|---------------------------|-----------------|
| Ambient temperature range | -20 °C to 45 °C |
| T-Case Maximum (Nom)      | 70 °C           |

| Controls and Dimming |    |
|----------------------|----|
| Dimmable             | No |

# MASTER LEDtube Mains T5

## Mechanical and Housing

|                |                    |
|----------------|--------------------|
| Bulb Finish    | Frosted            |
| Bulb Material  | Glass              |
| Product Length | 1,200 mm           |
| Bulb Shape     | Tube, double-ended |

## Approval and Application

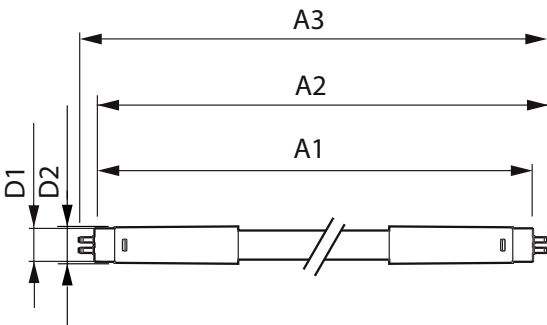
|                               |  |
|-------------------------------|--|
| Energy Saving Product         | Yes  |
| Approval Marks                | RoHS compliance CE marking KEMA Keur certificate |
| Energy Consumption kWh/1000 h | 26 kWh   |
| EPREL Registration Number     | 652.789  |
| CE mark                       | Yes  |

|                   |     |
|-------------------|-----|
| EU RoHS compliant | Yes |
|-------------------|-----|

## Product Data

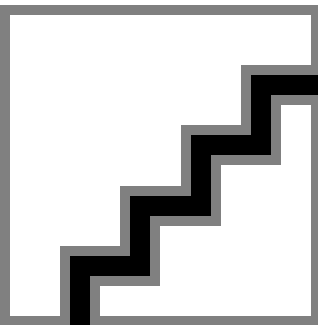
|                                 |                                  |
|---------------------------------|----------------------------------|
| Full product code               | 871869681923400                  |
| Order product name              | MAS LEDtube 1200mm HO 26W 840 T5 |
| Order code                      | 929001908602                     |
| Numerator - Quantity Per Pack   | 1                                |
| Numerator - Packs per outer box | 10                               |
| Material number (12NC)          | 929001908602                     |
| Full product name               | MAS LEDtube 1200mm HO 26W 840 T5 |
| EAN/UPC - Case                  | 8718696819241                    |

## Dimensional drawing

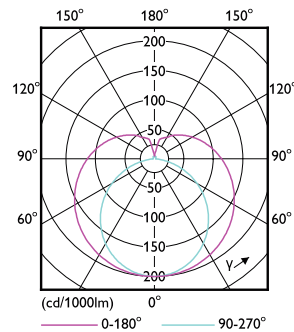


| Product                          | D1    | D2      | A1       | A2         | A3         |
|----------------------------------|-------|---------|----------|------------|------------|
| MAS LEDtube 1200mm HO 26W 840 T5 | 15 mm | 16.9 mm | 1,149 mm | 1,156.1 mm | 1,163.2 mm |

## Photometric data



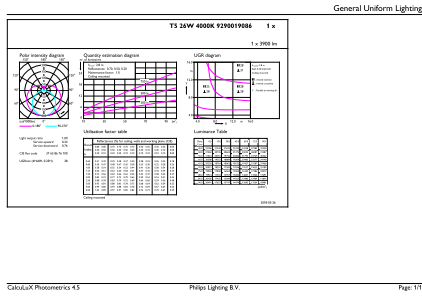
Spectral Power Distribution Colour - MAS LEDtube 1200mm HO 26W 840 T5



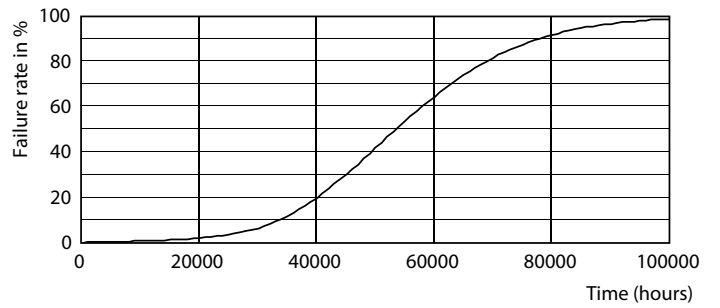
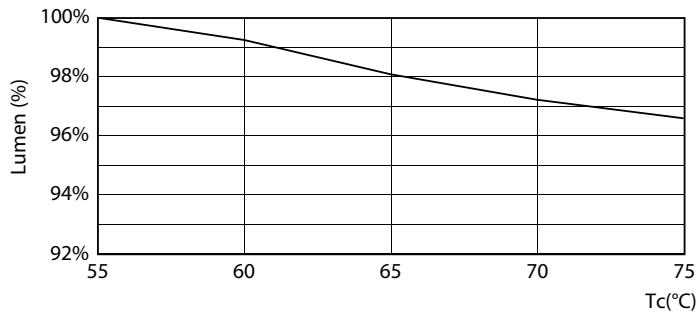
Light Distribution Diagram - MAS LEDtube 1200mm HO 26W 840 T5

# MASTER LEDtube Mains T5

## Photometric data

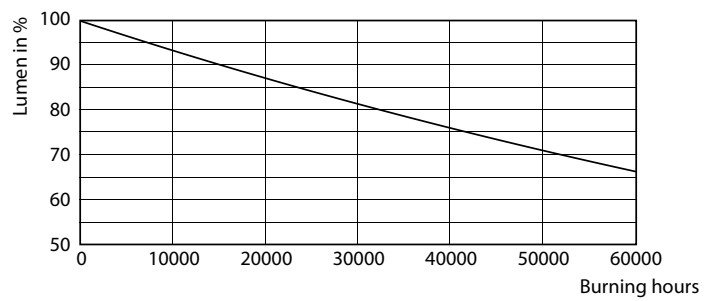
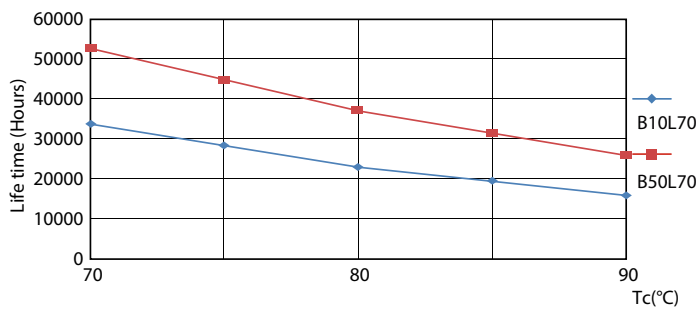


## Lifetime



Lumen Maintenance Diagram - MAS LEDtube 1200mm HO 26W 840 T5

Life Expectancy Diagram - MAS LEDtube 1200mm HO 26W 840 T5

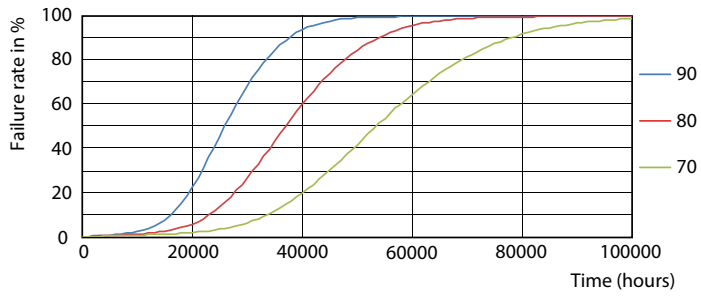


Life Expectancy Diagram - MAS LEDtube 1200mm HO 26W 840 T5

Lumen Maintenance Diagram - MAS LEDtube 1200mm HO 26W 840 T5

# MASTER LEDtube Mains T5

## Lifetime



Life Expectancy Diagram - MAS LEDtube 1200mm HO 26W 840 T5

