



MASTER UltraEfficient LED candles and lusters

MAS LEDLusterND2.3-40W E27 840 P45CL GUE

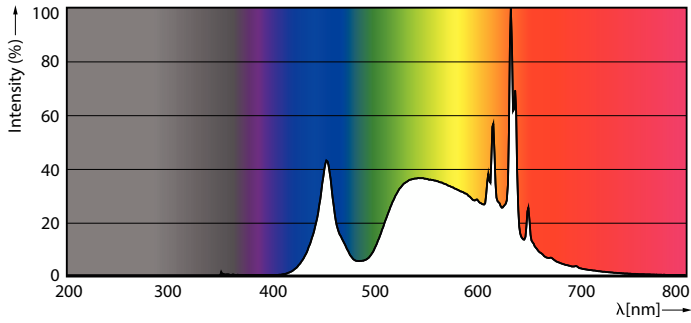
This is the most efficient LED candle from Philips brand. 210lm/W helps to concrete the company statement of sustainability. 50000 hour lifetime helps to extend the replacement cycle to reduce the waste. This is not only the high SPEC product, but also keep the light quality of Philips brand

Product data

General Information		Stroboscopic effect value (SVM)		0.4
Cap-Base	E27 [E27]	Photobiological safety according to EN 62471		RG1
Nominal lifetime	50,000 hour(s)	Operating and Electrical		
Switching Cycle	50,000	Line Frequency	50 to 60 Hz	
Lighting Technology	LED	Input Frequency	50 to 60 Hz	
Flux measurement reference	Sphere	Power Consumption	2.3 W	
EU RoHS compliant	Yes	Lamp Current (Nom)	25 mA	
Light Technical		Wattage Equivalent	40 W	
Color Code	840 [CCT of 4000K]	Starting Time (Nom)	0.5 s	
Luminous Flux	485 lumen	Warm-up time to 60% light	0.5 s	
Color Designation	Cool White (CW)	Power Factor (Fraction)	0.4	
Correlated Color Temperature (Nom)	4000 K	Voltage (Nom)	220-240 V	
Luminous Efficacy (rated) (Nom)	210 lm/W	Voltage (Nom)	220 V	
Color Consistency	<6	Temperature		
Color rendering index (CRI)	80	Ambient temperature range	-20 to +45 °C	
LLMF At End Of Nominal Lifetime (Nom)	70 %			
Flickering value (PstLM)	1			

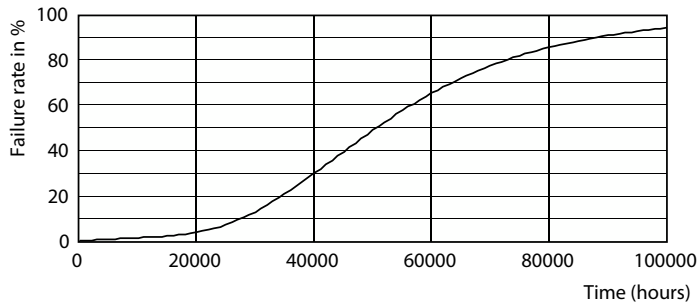
MASTER UltraEfficient LED candles and lusters

Photometric data



Spectral Power Distribution Colour - MAS LEDLusterND2.3-40W E27 840 P45CL GUE

Lifetime



Life Expectancy Diagram - MAS LEDLusterND2.3-40W E27 840 P45CL GUE



Lumen Maintenance Diagram - MAS LEDLusterND2.3-40W E27 840 P45CL GUE

