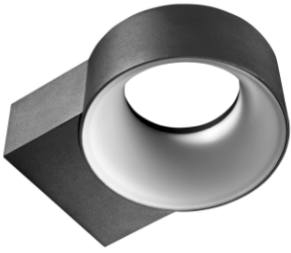


# Product Data Sheet

## GWF2100FR830

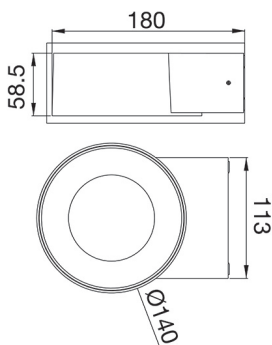
ELIA OL



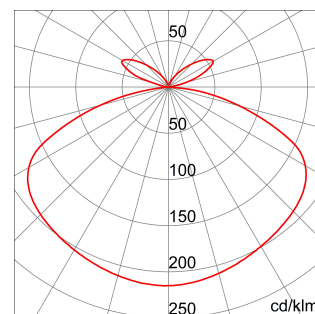
ELIA OL is an elegant die-cast aluminum fixture for wall mounting, ideal for indoor and outdoor architectural lighting such as: stairs, passageways or facades, quick and easy to install, with a clean and essential line. Designed in two different finishes (black and white), with double emission diffusing polycarbonate opal screen (top and down) to create a comfortable atmosphere, color temperatures of 3,000K, 4,000 K and 5,700 K and a color rendering index greater than 80. It has been designed to withstand temperature variations from -20 °C to + 45 °C, water and dust penetration up to IP65 degree and shocks up to IK08 degree. Light and handy ELIA OL is easy to install thanks also to the rear bracket for fixing, the quick-fit terminal placed in the back for the electrical wiring.

GENERAL INFORMATION		OPTIC AND ILLUMINATING FEATURES	
Context	External and internal architectural lighting	Optic	Wide opal
Luminaire	LED luminaire for accentuation	Unified Glare Rating	UGR ≤ 25
Application	Indoor / Outdoor	Lumen output (lm)	650
Unique digital code (Datamatrix)	Currently not present	Efficacy (lm/W)	81
Colour	Black	Colour temperature	3000 K
Type of light source	LED	Colour Rendering Index	CRI 80
System power	8 W	Standard Deviation Colour Matching	SDCM = 5
LED Lifetime	L80B50 (Tq25°) = 50.000h	Photobiological Risk Class	RG0
Weight (kg)	0.5	Standard	EN 60598-1; EN 60598-2-1; IEC/TR 62778; EN 62493
Warranty	5 years	ELETRICAL AND LIGHTING FEATURES	
Stocking temperature	-20° +65°	Supply voltage	100-240 V
Operating temperature	-20° +45°	Rated frequency (Hz)	50/60 Hz
MATERIALS		Driver	Built-in
Body	Die-cast aluminium	Driver failure rate	F025 (Tq=25°C) = 50.000 h
Shield type	Polycarbonate	Overvoltage protection	DM 0,5KV / CM 1KV
Optic	Bi-emission polycarbonate diffuser	Control System	ON / OFF
Gasket	-	INSTALLATION AND MAINTENANCE	
Locking Hook	-	Mounting and installation	Wall mounting
External screw	Stainless steel	Tilt	-
Colour	Powder coating	Wiring	With connection terminal
STANDARDS AND APPROVALS		Fixing	Via stainless steel support
Classification	-	Light source replaceability	Non-replaceable
Device with reduced surface temperature	-	Controlgear replaceability	Non-replaceable
DIN 18032-3 certification	-	Driver Box	Built-in
IPEA	Green Areas B	Maximum surface exposed to the wind	-
Insulation class	I	-	-
IP degree	IP65	-	-
Mechanical resistance	IK08	-	-
Glow Wire Test	750 °C	-	-

### DIMENSIONAL



### PHOTOMETRIC DISTRIBUTION



### TECHNICAL SYMBOLOGY



**IP**  
IP65

**IK**  
IK08

**GWT**  
750 °C

Product Data Sheet  
**GWF2100FR830**

ELIA OL

STANDARDS/APPROVALS

