



# MASTER LEDtube EM/ Mains T8

## MASTER LEDtube 1500mm UO 23W 840 T8

The Philips MASTER LEDtube integrates a LED light source into a traditional fluorescent form factor. Its unique design creates a perfectly uniform visual appearance which cannot be distinguished from traditional fluorescent. For those that are looking for value for money within limited budget and re-lamping efforts for better light effect and lifetime.

### Warnings and Safety

- NOTES: The overall energy efficiency and light distribution of any installation that uses these lamps are determined by the design of the installation.

### Product data

General Information	
Cap-Base	G13 ROT (Rotating) [ Medium Bi-Pin Fluorescent]
EU RoHS compliant	Yes
Nominal Lifetime (Nom)	60000 h
Switching Cycle	200000X
Light Technical	
Color Code	840 [ CCT of 4000K]
Beam Angle (Nom)	160 °
Luminous Flux (Nom)	3700 lm
Color Designation	Cool White (CW)
Correlated Color Temperature (Nom)	4000 K
Luminous Efficacy (rated) (Nom)	160.00 lm/W
Color Consistency	<6
Color Rendering Index (Nom)	83

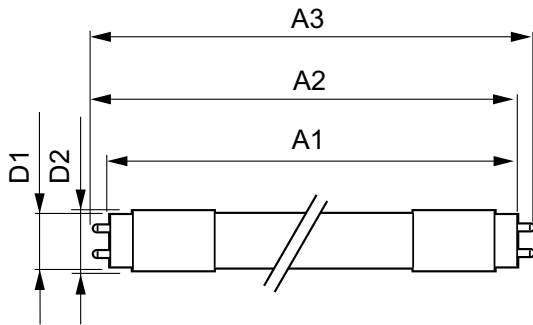
LLMF At End Of Nominal Lifetime (Nom) 70 %	
Operating and Electrical	
Input Frequency	50 to 60 Hz
Power (Nom)	23 W
Lamp Current (Max)	108 mA
Lamp Current (Min)	99 mA
Starting Time (Nom)	0.5 s
Warm Up Time to 60% Light (Nom)	0.5 s
Power Factor (Nom)	0.9
Voltage (Nom)	220-240 V
Temperature	
T-Ambient (Max)	45 °C
T-Ambient (Min)	-20 °C
T-Storage (Max)	65 °C

# MASTER LEDtube EM/Mains T8

T-Storage (Min)	-40 °C
T-Case Maximum (Nom)	60 °C
<b>Controls and Dimming</b>	
Dimmable	No
<b>Mechanical and Housing</b>	
Bulb Material	Plastic
Product Length	1500 mm
<b>Approval and Application</b>	
Energy Efficiency Label (EEL)	A++
Energy Saving Product	Yes
Approval Marks	RoHS compliance TUV CE marking KEMA Keur certificate

Energy Consumption kWh/1000 h	23 kWh
<b>Product Data</b>	
Full product code	871869964729200
Order product name	MASTER LEDtube 1500mm UO 23W 840 T8
EAN/UPC - Product	8718699647292
Order code	929002020902
Numerator - Quantity Per Pack	1
Numerator - Packs per outer box	10
Material Nr. (12NC)	929002020902
Net Weight (Piece)	0.310 kg

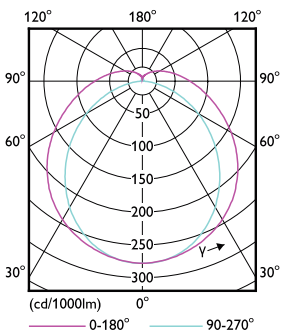
## Dimensional drawing



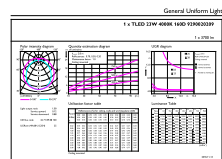
TLED 5ft 220-240V 23-58W 3700lm4000K G13

Product	D1	D2	A1	A2	A3
MASTER LEDtube 1500mm UO 23W 840 T8	25.8 mm	28 mm	1498.7 mm	1505.8 mm	1512.9 mm

## Photometric data



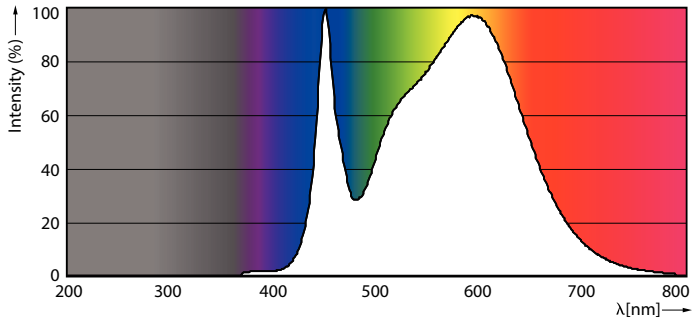
TLED\_5ft\_220-240V\_23-58W\_G13



TLED\_5ft\_220-240V\_23-58W\_3700lm\_4000K\_G13

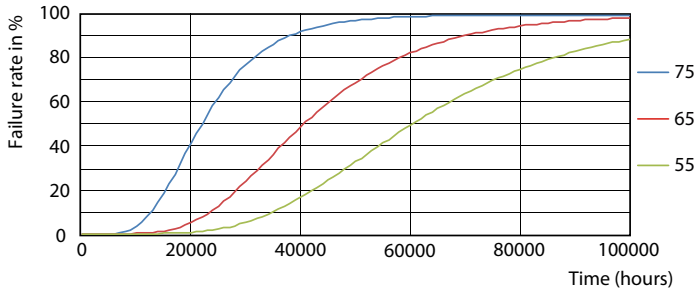
# MASTER LEDtube EM/Mains T8

## Photometric data

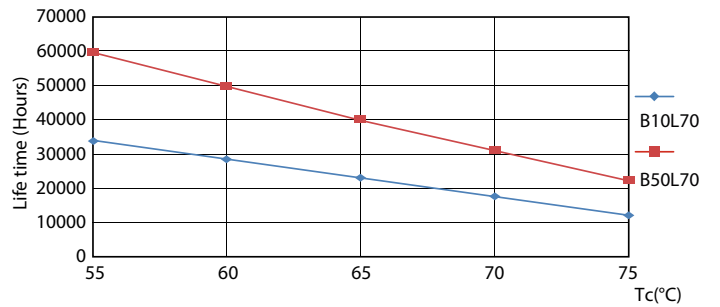


TLED\_5ft\_220-240V\_23-58W\_3700lm\_4000K\_G13

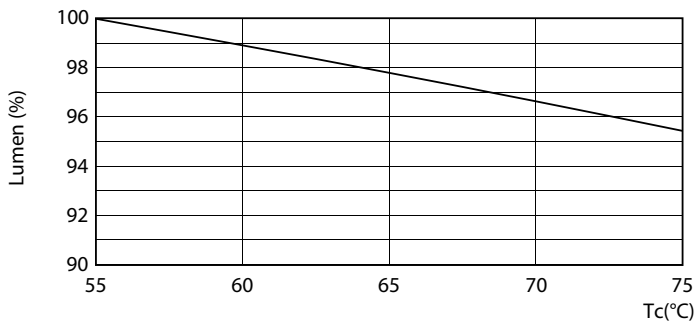
## Lifetime



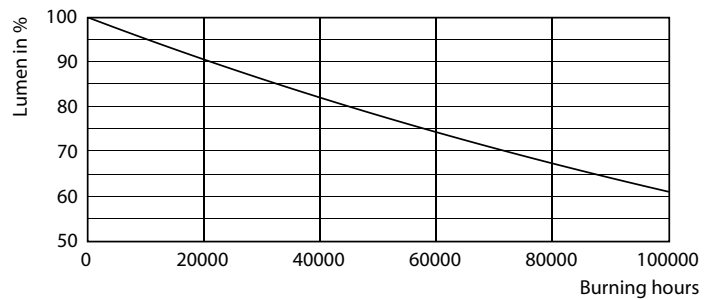
TLED\_220-240V\_G13-FailureRate



TLED\_220-240V\_G13-LifetimeVsTc



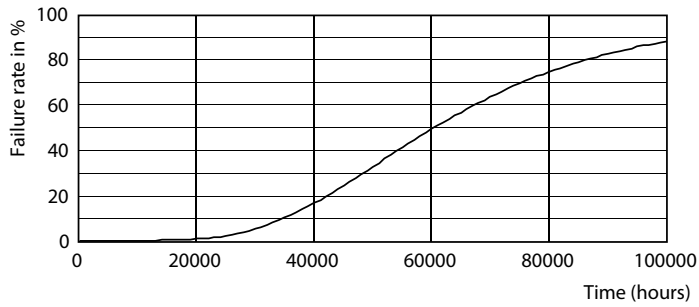
TLED\_220-240V\_G13-LumenVsTc



TLED\_220-240V\_G13

# MASTER LEDtube EM/Mains T8

## Lifetime



TLED\_220-240V\_G13

