



# CorePro LED PLC 4P

## CorePro LED PLC 9W 830 4P G24q-3

The CorePro LED PLC 4P integrates a LED light source into a traditional fluorescent form factor. This product is the ideal solution for uplamping in general lighting applications: it meets basic lighting requirements, offers significant energy savings, and is environmentally friendly.

### Product data

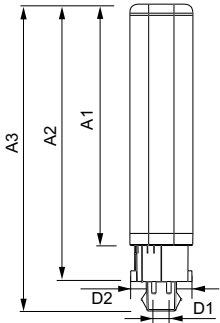
General Information		Temperature	
Cap-Base	G24Q-3 [G24q-3]	Warm-up time to 60% light	0.5 s
Nominal lifetime	30,000 hour(s)	Power Factor (Fraction)	0.9
Switching Cycle	50,000	Voltage (Nom)	20-50 V
Lighting Technology	LED	<b>Temperature</b>	
Flux measurement reference	Sphere	Ambient temperature range	-20 °C to 35 °C
<b>Light Technical</b>		T-Case Maximum (Nom)	76 °C
Color Code	830 [CCT of 3000K]	<b>Controls and Dimming</b>	
Beam Angle (Nom)	120 degree(s)	Dimmable	No
Luminous Flux	950 lumen	<b>Mechanical and Housing</b>	
Color Designation	White (WH)	Bulb Material	Plastic
Correlated Color Temperature (Nom)	3000 K	Product Length	200 mm
Luminous Efficacy (rated) (Nom)	100.00 lm/W	Bulb Shape	Tube, single-ended
Color Consistency	<6	<b>Approval and Application</b>	
Color rendering index (CRI)	83	Energy Saving Product	Yes
LLMF At End Of Nominal Lifetime (Nom)	70 %	Approval Marks	TUV CE marking RoHS compliance KEMA Keur certificate
<b>Operating and Electrical</b>		Energy Consumption kWh/1000 h	9 kWh
Line Frequency	30000-80000 Hz	EPREL Registration Number	403,550
Input Frequency	30000-80000 Hz	CE mark	Yes
Power Consumption	9 W		
Starting Time (Nom)	0.5 s		

# CorePro LED PLC 4P

EU RoHS compliant	Yes
<b>Product Data</b>	
Full product code	871869654115900
Order product name	CorePro LED PLC 9W 830 4P G24q-3
Order code	929001200802
Numerator - Quantity Per Pack	1

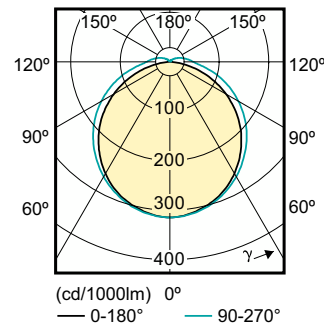
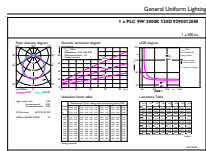
Numerator - Packs per outer box	10
Material number (12NC)	929001200802
Full product name	CorePro LED PLC 9W 830 4P G24q-3
EAN/UPC - Case	8718696541166

## Dimensional drawing

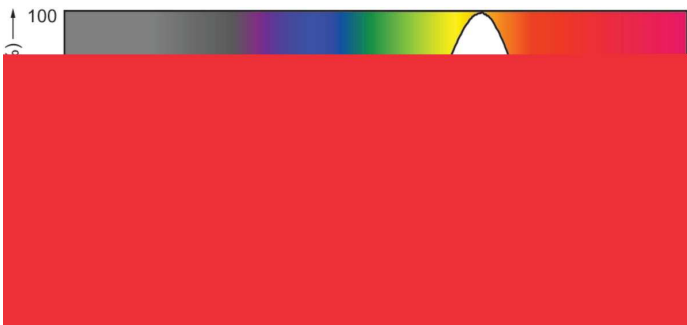


Product	D1	D2	A1	A2	A3
CorePro LED PLC 9W 830 4P G24q-3	24.3 mm	28.4 mm	128.8 mm	148 mm	163.6 mm

## Photometric data



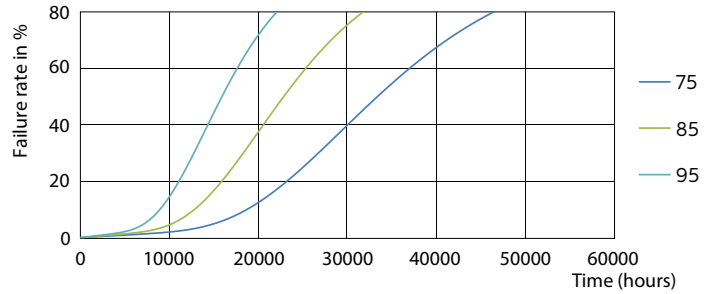
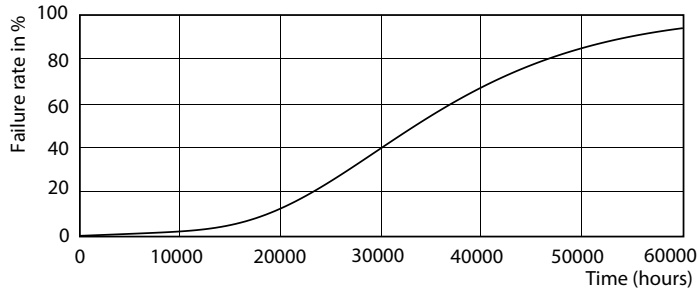
Light Distribution Diagram - CorePro LED PLC 9W 830 4P G24q-3



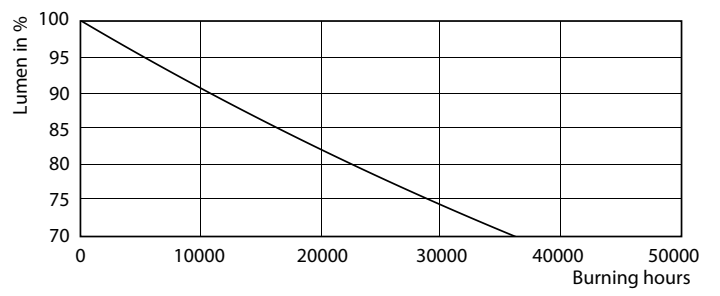
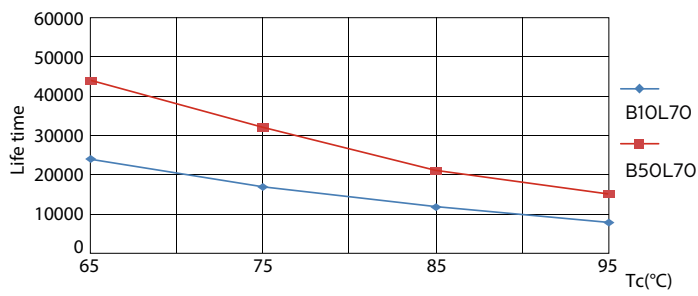
Spectral Power Distribution Colour - CorePro LED PLC 9W 830 4P G24q-3

# CorePro LED PLC 4P

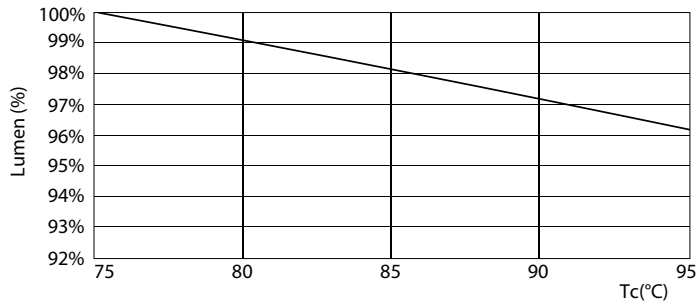
## Lifetime



Life Expectancy Diagram - CorePro LED PLC 9W 830 4P G24q-3



Life Expectancy Diagram - CorePro LED PLC 9W 830 4P G24q-3



Lumen Maintenance Diagram - CorePro LED PLC 9W 830 4P G24q-3

## CorePro LED PLC 4P

