

REWIRING INSTRUCTION



For 1-lamp luminaires with electronic driver (ECG) to AC mains direct wiring for operation with OSRAM SubstiTUBE T8 EM/UN or OSRAM SubstiTUBE T5 AC

Rewiring of 1-lamp Luminaires

Rewiring must be executed by a qualified electrician.

Luminaire to be rewired with built in reflector (above), with removed reflector (below)



Tools needed: wire cutter, wire stripper, different screwdrivers

New wires must comply with latest version of EN 50525 and EN 60598-1, have a minimum cross section of 0,4 mm² and the isolation have a nominal thickness of 0,5 mm.

Material included in conversion kit

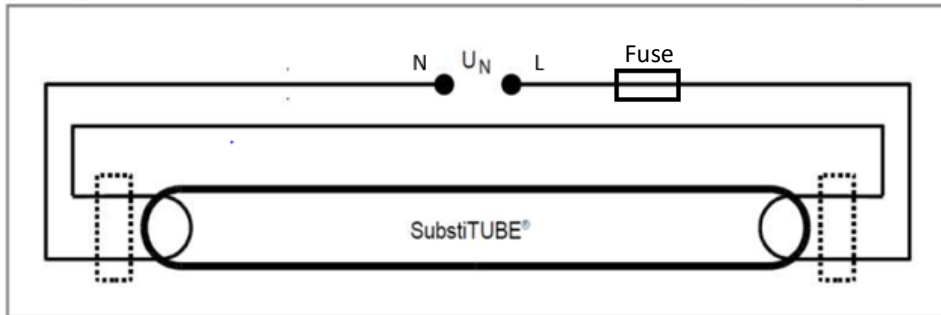


Content conversion kit:

- 4 WAGO connectors
- 4 adhesive sockets for cable ties
- 4 cable ties
- New blank name plate for luminaire (to be fixed clearly visible and permanently on the luminaire)
- Pre-wired microfuse (T2A 250V)

1. General Work Steps

Direct wiring circuit diagram of a 1-lamp luminaire on AC mains



Remove wiring from ECG step by step and re-connect as prescribed below



Step 1: Connect mains line "L" to fuse with one wire using a WAGO connector

Step 2: Connect second fuse line to right lamp holder. Pay attention to correct connection of all ECG clamps within the following steps.

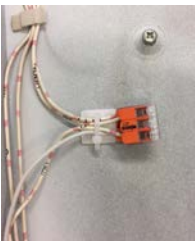
Step 3: Connect right lamp holder to left lamp holder.

Step 4: Connect second line from left lamp holder to neutral wire "N". Use WAGO connector if needed.




Step 5: Remove ECG.

Step 6: Fix all wires with adhesive sockets and cable ties.

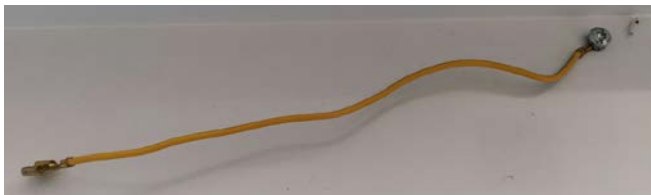


1. General Work Steps

Step 7: Fill in and fix new name plate clearly visible and permanently on luminaire while removing or pasting over old name plate.

Umrüster/Installer:	
Datum/Date: Leuchtentyp/Type of luminaire:	
230V~ / 50Hz / max. ____W <input type="checkbox"/> G13 / <input type="checkbox"/> G5 Nur geeignet für LED-Konversions-Röhren des Typs OSRAM SubstiTUBE T8/T5. Only suitable for use with LED conversion tubes type OSRAM SubstiTUBE T8/T5	

Step 8: Conduct final visual inspection of all components and check if all wires have been fixed tightly inside of the WAGO connectors. Cables should not be pinched during the mounting of the luminaire. Defect parts must be repaired or replaced.



If needed, re-connect earth conductor (PE)



2. Wiring examples with typical ECG

Remove wiring from ECG step by step and re-connect as prescribed below



Step 1: Connect mains line "L" to fuse with one wire



1. Siemens ECG



Step 2: Connect second fuse line to line „1“

Step 3: Connect line „2“ to line „3“

Step 4: Connect line „4“ to line „N“

Further steps according to general work steps.

2. OSRAM ECG



Step 2: Connect second fuse line to line „21“

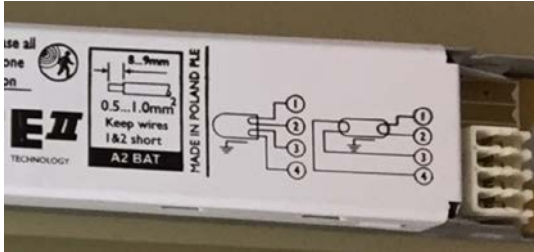
Step 3: Connect line "22" to line "23"

Step 4: Connect line "24" to line "N"

Further steps according to general work steps.

2. Wiring examples with typical ECG

3. Philips ECG



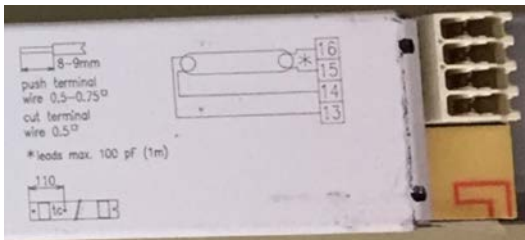
Step 2: Connect second fuse line to line „1“

Step 3: Connect line „2“ to line „3“

Step 4: Connect line „4“ to line „N“

Further steps according to general work steps.

4. Zumtobel/Tridonic ECG



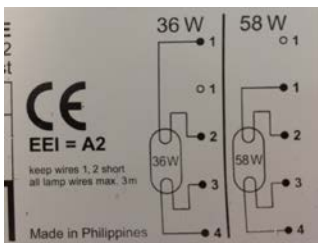
Schritt 2: Connect second fuse line to line „16“

Schritt 3: Connect line „15“ to line „14“

Schritt 4: Connect line „13“ to line „N“

Further steps according to general work steps.

5. BAG ECG



Step 2: Connect second fuse line to line „1“

Step 3: Connect line „2“ to line „3“

Step 4: Connect line „4“ to line „N“

Further steps according to general work steps.

ABOUT LEDVANCE

With offices in more than 50 countries and business activities in more than 140 countries, LEDVANCE is one of the world's leading general lighting providers for professional users and end consumers. Having emerged from the general lighting business of OSRAM GmbH, LEDVANCE offers a wide-ranging assortment of LED luminaires for a broad spectrum of application areas, intelligent lighting products for Smart Homes and Buildings, one of the largest LED lamps portfolios in the industry as well as traditional light sources



LEDVANCE

LEDVANCE GmbH
Parkring 29 – 33
85748 Garching
Germany
LEDVANCE.COM

Subject to change without notice. Errors and omission excepted.

LEDVANCE ist Lizenznehmer der Produktmarke OSRAM für Lampen im Bereich Allgemeinbeleuchtung.

LEDVANCE.COM

