

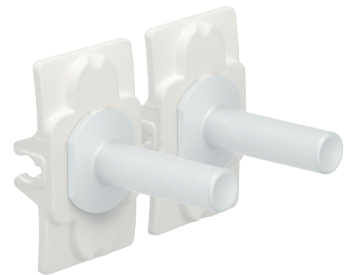
# Niko Toggle set for double switch functions, steel white coated

154-57002

4 year warranty

The Niko Toggle set contains a left and a right Toggle part. The left part clicks onto the left switch function. The right part clicks onto the right switch function. Click both Toggle parts onto the function before you click the Niko Toggle faceplate into place.

The Niko Toggle set consist of a click connector made out of high grade, durable plastic that permanently fixes the two levers. The levers are made of enamelled aluminium.



## Technical data

Niko Toggle set for double switch functions, steel white coated.

- Material: enamelled aluminium
- Colour: enamelled white (approximately NCS S 1002 - B50G, RAL 000 90 00)
- Dimensions (HxWxD): 26.8 x 16.9 x 28.4 mm
- Marking: CE

