



# MASTER LEDtube EM/ Mains T8

## MAS LEDtube 1500mm HO 18.2W 840 T8

The Philips MASTER LEDtube integrates a LED light source into a traditional fluorescent form factor. Its unique design creates a perfectly uniform visual appearance, which cannot be distinguished from traditional fluorescent. These T8 LED tubes are the right choice for absolute performance and are designed to stand up to everyday conditions. Unparalleled savings thanks to low energy consumption and an exceptionally long lifetime ensure this tube masters every demanding application.

### Warnings and Safety

- NOTE: The overall energy efficiency and light distribution of any installation that uses these lamps will be determined by the design of the installation.

### Product data

General Information	
Cap-Base	G13 ROT (Rotating) [Medium Bi-Pin Fluorescent]
Nominal lifetime	75,000 hour(s)
Switching Cycle	200,000
Lighting Technology	LED
Flux measurement reference	Sphere
Light Technical	
Color Code	840 [CCT of 4000K]
Beam Angle (Nom)	160 degree(s)
Luminous Flux	3,100 lumen
Color Designation	Cool White (CW)
Correlated Color Temperature (Nom)	4000 K

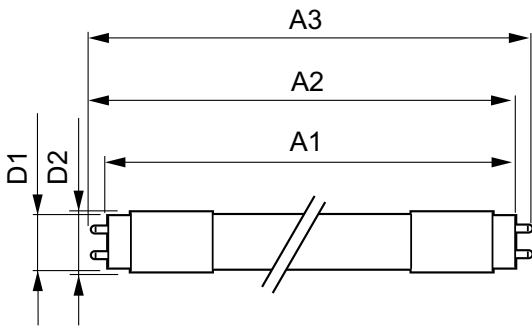
Luminous Efficacy (rated) (Nom)	170 lm/W
Color Consistency	<6
Color rendering index (CRI)	80
LLMF At End Of Nominal Lifetime (Nom)	70 %
Operating and Electrical	
Line Frequency	50 to 60 Hz
Input Frequency	50 to 60 Hz
Power Consumption	18.2 W
Starting Time (Nom)	0.5 s
Warm-up time to 60% light	0.5 s
Power Factor (Fraction)	0.9
Voltage (Nom)	220-240 V

# MASTER LEDtube EM/Mains T8

Temperature	
Ambient temperature range	-20 °C to 45 °C
T-Case Maximum (Nom)	55 °C
Controls and Dimming	
Dimmable	No
Mechanical and Housing	
Bulb Finish	Frosted
Bulb Material	Plastic
Product Length	1,500 mm
Bulb Shape	Tube, double-ended
Approval and Application	
Energy Saving Product	Yes
Approval Marks	RoHS compliance TUV CE marking KEMA Keur certificate

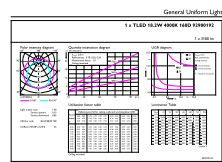
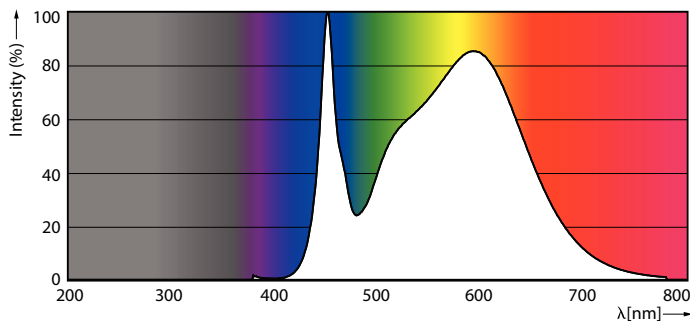
Energy Consumption kWh/1000 h	19 kWh
EPREL Registration Number	1,206,970
CE mark	Yes
EU RoHS compliant	Yes
Product Data	
Full product code	871869959243100
Order product name	MAS LEDtube 1500mm HO 18.2W 840 T8
Order code	929001923002
Numerator - Quantity Per Pack	1
Numerator - Packs per outer box	10
Material number (12NC)	929001923002
Full product name	MAS LEDtube 1500mm HO 18.2W 840 T8
EAN/UPC - Case	8718699592448

## Dimensional drawing



Product	D1	D2	A1	A2	A3
MAS LEDtube 1500mm HO 18.2W 840 T8	25.8 mm	28 mm	1,498.8 mm	1,505.9 mm	1,513 mm

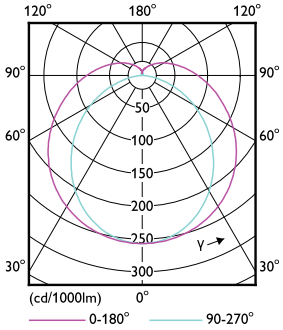
## Photometric data



Spectral Power Distribution Colour - MAS LEDtube 1500mm HO 18.2W 840 T8

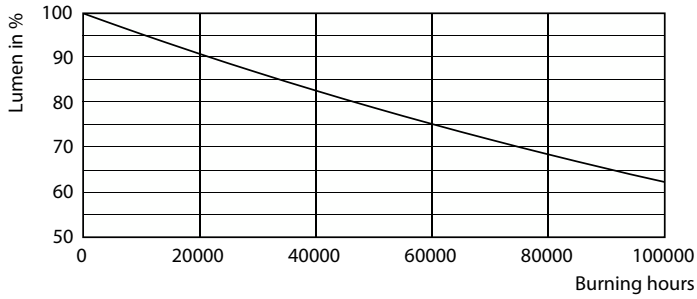
# MASTER LEDtube EM/Mains T8

## Photometric data

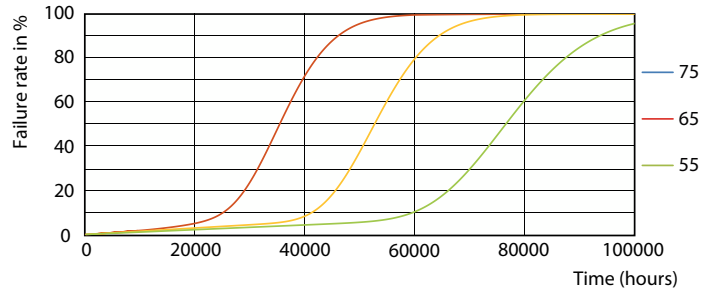


Light Distribution Diagram - MAS LEDtube 1500mm HO 18.2W 840 T8

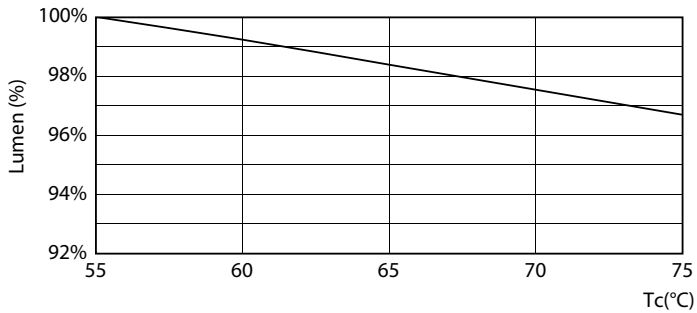
## Lifetime



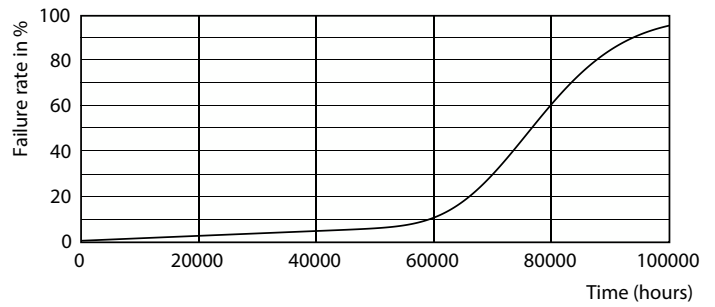
Lumen Maintenance Diagram - MAS LEDtube 1500mm HO 18.2W 840 T8



Life Expectancy Diagram - MAS LEDtube 1500mm HO 18.2W 840 T8



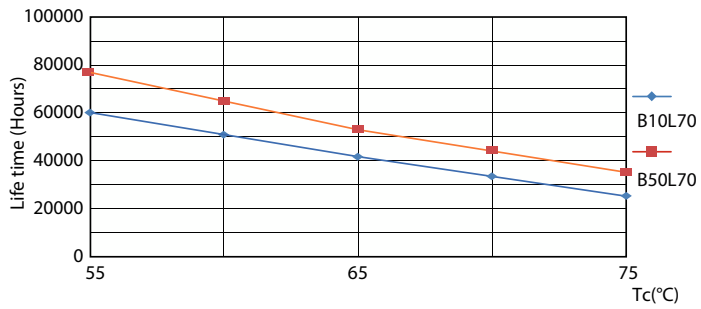
Lumen Maintenance Diagram - MAS LEDtube 1500mm HO 18.2W 840 T8



Life Expectancy Diagram - MAS LEDtube 1500mm HO 18.2W 840 T8

# MASTER LEDtube EM/Mains T8

## Lifetime



Life Expectancy Diagram - MAS LEDtube 1500mm HO 18.2W 840 T8

