

# PRODUCT DATASHEET

## LB FLEX 1500 DALI P 105W 840 W

LOW BAY FLEX 1500 DALI | Low-bay luminaires with attractive linear design, up to 160 lm/W with DALI-2 technology



### Areas of application

- Replacement for luminaires with mercury vapor or metal halide lamps
- Warehouses
- Logistics halls
- Industrial and storage facilities
- Discounters, supermarkets
- Sports halls
- Indoor sports facilities

### Product benefits

- Economical thanks to high luminous efficacy up to 160 lm/W
- Easy and quick installation thanks to toolless connector box with 5- and 7-pole terminals
- Modern and robust design
- 5 years guarantee

### Product features

- Different luminous flux and beam angle for mounting heights of ~ 4 m to ~14 m in 4000 K
- Through-wiring cable already installed
- Long Lifetime (L80/B10): up to 100,000 h
- High color consistency:  $\leq 3$  SDCM



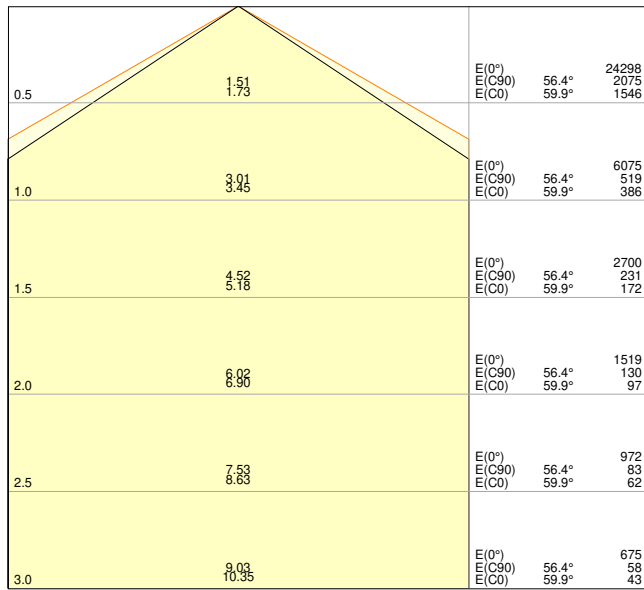
## TECHNICAL DATA

### Electrical data

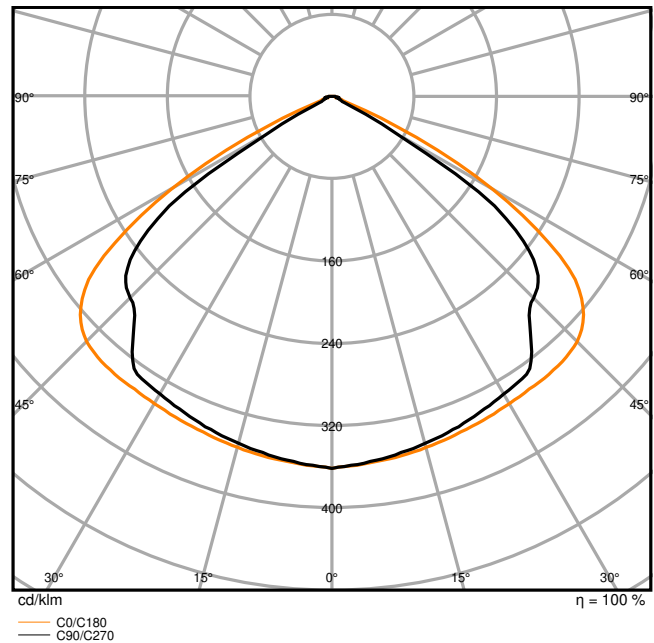
Nominal wattage	105 W
Nominal voltage	220...240 V
Mains frequency	0/50/60 Hz
Nominal current	450 mA
Inrush current	17.3 A
Inrush current time $T_{h50}$	164 $\mu$ s
Max. number of luminaires per miniature circuit breaker B16	27
Max. number of luminaires per miniature circuit breaker C10	17
Max. number of luminaires per miniature circuit breaker C16	28
Power factor $\lambda$	$\geq 0.90$
Total harmonic distortion	$\leq 20 \%$
Protection class	I
Operating mode	ELECTRONIC CONTROL GEAR (ECG)

### Photometrical data

Luminous flux	16800 lm
Luminous efficacy	160 lm/W
Color temperature	4000 K
Light color (designation)	Cool White
Color rendering index Ra	$\geq 80$
Standard deviation of color matching	< 3 sdcn
Low flicker	Yes
Photobiological safety group acc. to EN62778	RG1
Photobiological safety group acc. to EN62471	RG1
Beam angle	90 °



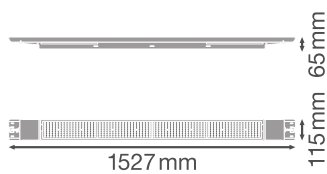
LDC typ cone



LDC typ polar

### Dimensions & Weight

Length	1527 mm
Width	115.00 mm
Height	65.00 mm
Product weight	4150.00 g



## Materials & Colors

Product color	White
Housing color	White
Body material	Steel
Cover material	Polycarbonate (PC)
Light emitting surface material	Polycarbonate (PC)
Glow Wire Test according to IEC 60695-2-12	650 °C
Mercury content	0.0 mg

## Application & Mounting

Ambient temperature range	-25...+50 °C
Temperature range at storage	-20...+80 °C
Type of connection	Screwless terminal
Type of protection	IP23
Protection class IK (shock resistance)	IK08
Dimmable	Yes
Type of dimming	DALI2
Mounting type	Surface/Suspended
Mounting location	Ceiling
Application environment	Indoor
Adjustable	No
LED module replaceable	Not replaceable
With light source	Yes

## Lifespan

Lifespan L70/B50 at 25 °C	100000 h <sup>1)</sup>
Lifespan L80/B10 at 25 °C	100000 h <sup>1)</sup>
Lifespan L90/B10 at 25 °C	82000 h
Number of switching cycles	50000

<sup>1)</sup> t[h]: L70 / B50 @ 25 °C (Ta), t[h]: L80 / B10 @ 25 °C (Ta), t[h]: L90 / B10 @ 25 °C (Ta)

## Control gear

Output current	460 mA
ECG - Output ripple current	< 10 %
Recommended control gear	TRIDONIC/LCA 50W 100-400mA one4all lp PRE

## Emergency lighting

Wattage in emergency operation mode	18.9 W
Luminous flux in emergency operation mode	2662 lm











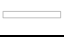

### Certificates & Standards

Standards	CE / CB / ENEC / TÜV SÜD / EAC / UKCA
Luminaire with limited surface temperature, "D sign"	No
Ball shot safe	No

### EQUIPMENT / ACCESSORIES

- Suspension kit, ball-proof cover and angulation mounting kit available as separate accessory

### DOWNLOAD DATA

Documents and certificates	
	User instruction
	Addon Technical Information
	Packaging insert
	Declarations Of Conformity CE
	Declarations Of Conformity UKCA
Photometric and lighting design files	
	IES file (IES)
	LDT file (Eulumdat)
	ULD file (DIALux)
	ROLF file (RELUX)
	UGR file (UGR table)
	LDC typ cone
	LDC typ polar

CAD/BIM files



BIM\_Revit\_3D



CAD\_STEP\_3D

Tender texts



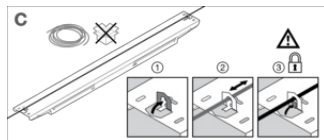
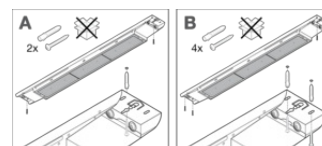
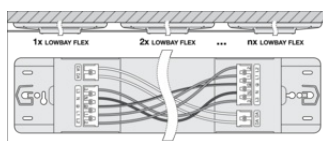
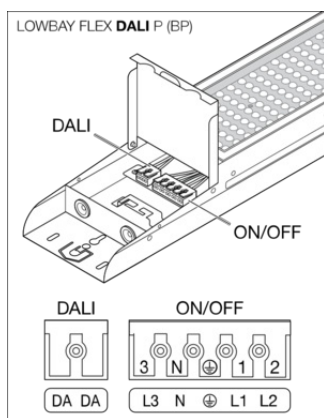
Tender documents

LOGISTICAL DATA

Product code	Packaging unit (Pieces/Unit)	Dimensions (length x width x height)	Gross weight	Volume
4058075676329	Folding box 1	76 mm x 1,535 mm x 123 mm	4605.00 g	14.35 dm <sup>3</sup>
4058075676336	Shipping box 3	1,555 mm x 250 mm x 156 mm	16253.00 g	60.65 dm <sup>3</sup>

The mentioned product code describes the smallest quantity unit which can be ordered. One shipping unit can contain one or more single products. When placing an order, for the quantity please enter single or multiples of a shipping unit.

ADDITIONAL CATALOG INFORMATION



References / Links

- For Guarantee see [www.ledvance.com/guarantee](http://www.ledvance.com/guarantee)

**DISCLAIMER**

Subject to change without notice. Errors and omission excepted. Always make sure to use the most recent release.