



HF-Selectalume II for TL5 lamps

HF-S 2 14-35 TL5 HE II 220-240V

HF-Selectalume II TL5 is the most cost-effective, reliable and outstanding solution for fluorescent lamps. These ballasts are part of an overall high-efficiency lighting system that may help you or your customers to achieve any international or local energy code you need to comply with. HF-Selectalume II TL5 ballasts are the ideal choice for a broad range of new construction and retrofit applications within the commercial sector, including general surface mounting or office lighting, parking garages, warehouses, waterproof and other applications. The ballast is primarily designed for Indoor application. For outdoor application, the luminaire should be minimum Classland need to be sufficiently protected against water & dust. The installation should also be guard against any lightening surge or any other necessary electrical protection as deemed in such typical installation & application.

Product data

General Information		Wiring	
Number of Lamps	2 piece/unit	Connector Type Input Terminals	WAGO 744 connector
		Connector Type Output Terminals	WAGO 744 connector [Suitable for manual wiring]
Operating and Electrical		Temperature	
Input Voltage	220 to 240 V	Ambient temperature range	-20 °C to 55 °C
Line Frequency	50 to 60 Hz	T-Case Lifetime (Nom)	75 °C
Input Frequency	50 to 60 Hz	T-Case Maximum (Max)	75 °C
Earth Leakage Current (Max)	0.5 mA		
Inrush Current Width	0.25 ms	Mechanical and Housing	
Inrush Current Peak (Max)	24 A	Housing	L360x30x22
Number of Products on MCB (16A Type B) (Nom)	28		

HF-Selectalume II for TL5 lamps

Approval and Application

Ingress protection code	IP20 [Finger-protected]
Energy Efficiency Index	A2 BAT
Approval Marks	CE marking ENEC certificate CCC certificate C-Tick certificate TISI marking SIRIM approval CCC certificate

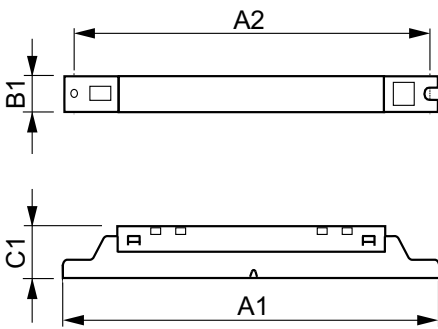
Product Data

Full product code	871829175844000
Order product name	HF-S 2 14-35 TL5 HE II 220-240V

Order code	913713042166
Numerator - Quantity Per Pack	1
Numerator - Packs per outer box	12
Material number (12NC)	913713042166
Full product name	HF-S 2 14-35 TL5 HE II 220-240V
EAN/UPC - Case	8718291758457



Dimensional drawing



Product	D1	C1	A1	A2	B1
HF-S 2 14-35 TL5 HE II 220-240V	4.2 mm	22.0 mm	360.0 mm	350.0 mm	30.0 mm

