



# CorePro LED PLL

## CorePro LED PLL HF 12W 830 4P 2G11

Philips CorePro LED PLL is the ideal uplamping solution for downlights & luminaires in a wide range of general lighting applications. It integrates a LED light source into a traditional fluorescent form factor to offer superb energy savings over a lifetime that's twice as long as fluorescent alternatives.

### Product data

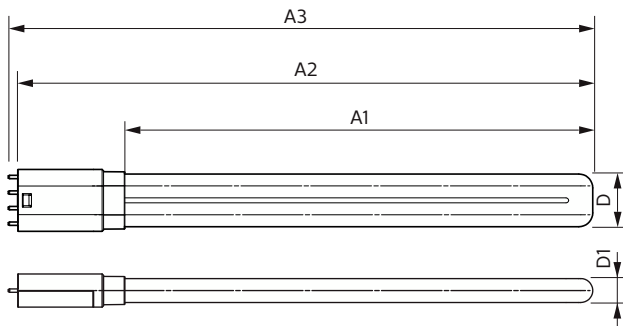
General Information		Temperature	
Cap-Base	2G11 [2G11]	Warm-up time to 60% light	0.5 s
Nominal lifetime	30,000 hour(s)	Power Factor (Fraction)	0.9
Switching Cycle	50,000	Voltage (Nom)	20-60 V
Lighting Technology	LED	<b>Temperature</b>	
Flux measurement reference	Sphere	Ambient temperature range	-20 °C to 45 °C
<b>Light Technical</b>		T-Case Maximum (Nom)	70 °C
Color Code	830 [CCT of 3000K]	<b>Controls and Dimming</b>	
Beam Angle (Nom)	160 degree(s)	Dimmable	No
Luminous Flux	1,440 lumen	<b>Mechanical and Housing</b>	
Color Designation	White (WH)	Bulb Finish	Frosted
Correlated Color Temperature (Nom)	3000 K	Bulb Material	Glass
Luminous Efficacy (rated) (Nom)	120 lm/W	Product Length	300 mm
Color Consistency	<6	Bulb Shape	Tube, single-ended
Color rendering index (CRI)	80	<b>Approval and Application</b>	
LLMF At End Of Nominal Lifetime (Nom)	70 %	Energy Saving Product	Yes
<b>Operating and Electrical</b>		Approval Marks	RoHS compliance TUV CE marking KEMA Keur certificate
Line Frequency	20K-80K Hz	Energy Consumption kWh/1000 h	12 kWh
Input Frequency	20K-80K Hz	EPREL Registration Number	1,370,821
Power Consumption	12 W		
Starting Time (Nom)	0.5 s		

# CorePro LED PLL

EU RoHS compliant	Yes
<b>Product Data</b>	
Full product code	871951448680500
Order product name	CorePro LED PLL HF 12W 830 4P 2G11
Order code	929003579002
Numerator - Quantity Per Pack	1

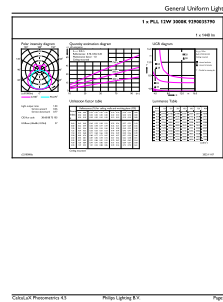
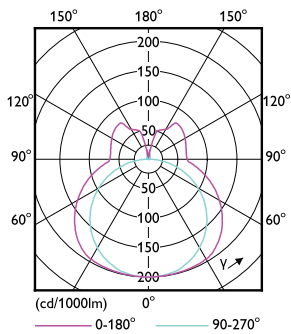
Numerator - Packs per outer box	10
Material number (12NC)	929003579002
Net weight	0.113 kg
Full product name	CorePro LED PLL HF 12W 830 4P 2G11
EAN/UPC - Case	8719514486812

## Dimensional drawing

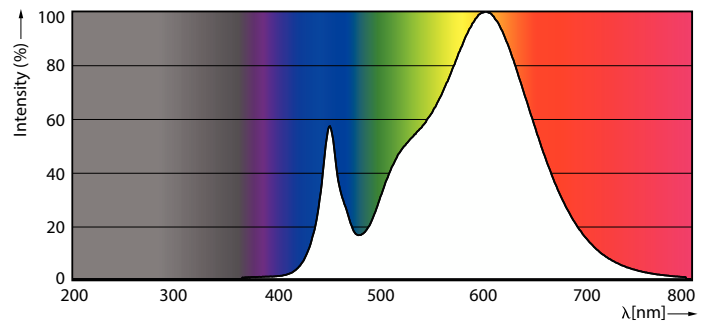


Product	D1	D2	A1	A2	A3
CorePro LED PLL HF 12W 830 4P 2G11	17 mm		250 mm	312 mm	319 mm

## Photometric data



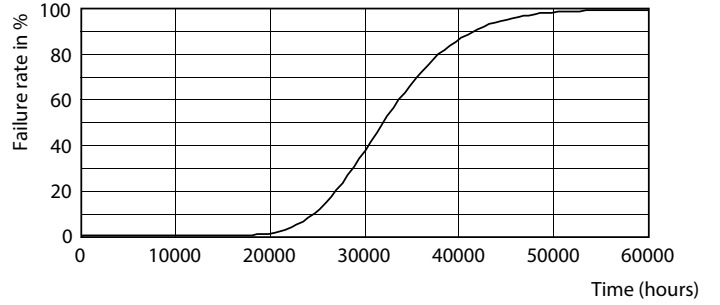
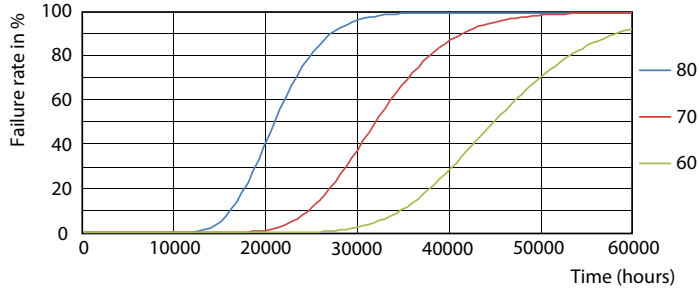
## Light Distribution Diagram



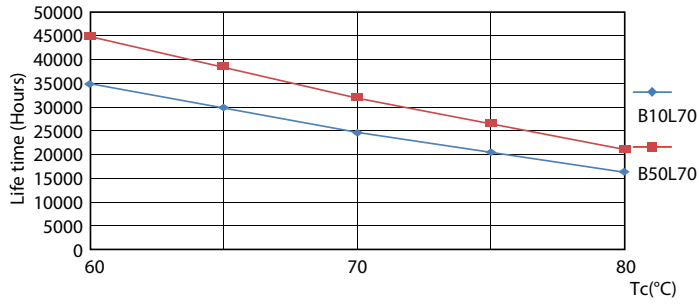
## Spectral Power Distribution Colour

# CorePro LED PLL

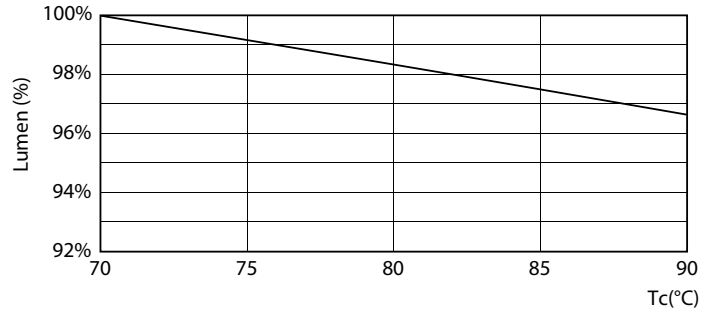
## Lifetime



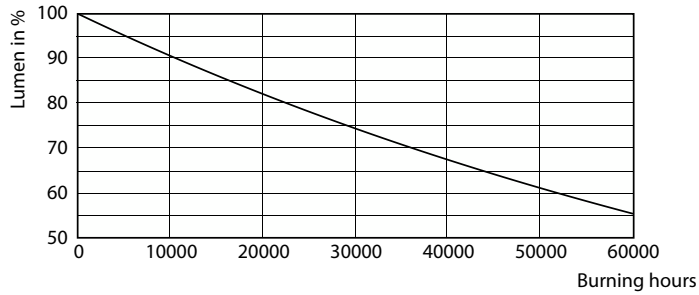
Life Expectancy Diagram



Life Expectancy Diagram - CorePro LED PLL HF 12W 830 4P 2G11



Life Expectancy Diagram



Lumen Maintenance Diagram

Lumen Maintenance Diagram - CorePro LED PLL HF 12W 830 4P 2G11

## CorePro LED PLL

