



# CorePro LEDspot Reflectors

## CoreProLEDspot ND1.8-30W R39 E14 827 36D

CorePro LEDspots Reflectors are a perfect fit for spot lighting and deliver warm halogen-like light. They are compatible with most existing fixtures with a GU10 or E27 base and are designed as a retrofit replacement for halogen or incandescent spots. CorePro LEDspots Reflectors deliver significant energy savings and minimize maintenance cost.

### Product data

General Information	
Cap-Base	E14 [E14]
Nominal lifetime	15,000 hour(s)
Switching Cycle	50,000
Lighting Technology	LED
Flux measurement reference	Narrow Cone
Light Technical	
Color Code	827 [CCT of 2700K]
Beam Angle (Nom)	36 degree(s)
Luminous Flux	150 lumen
Luminous Intensity (Nom)	250 cd
Color Designation	Warm White (WW)
Correlated Color Temperature (Nom)	2700 K
Luminous Efficacy (rated) (Nom)	83.00 lm/W
Color Consistency	<6
Color rendering index (CRI)	80
LLMF At End Of Nominal Lifetime (Nom)	70 %
Luminous Flux in 90° Cone (Rated)	150 lumen

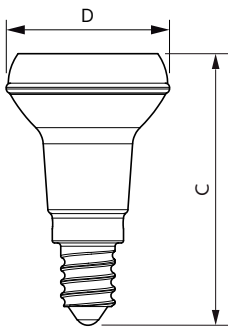
Operating and Electrical	
Line Frequency	50 to 60 Hz
Input Frequency	50 to 60 Hz
Power Consumption	1.8 W
Lamp Current (Nom)	16 mA
Wattage Equivalent	30 W
Starting Time (Nom)	0.1 s
Warm-up time to 60% light	0.1 s
Power Factor (Fraction)	0.5
Voltage (Nom)	220-240 V
Temperature	
T-Case Maximum (Nom)	50 °C
Controls and Dimming	
Dimmable	No
Mechanical and Housing	
Bulb Finish	Clear

# CorePro LEDspot Reflectors

Bulb Shape	R39 [R 39mm]
<b>Approval and Application</b>	
Suitable For Accent Lighting	Yes
Energy Consumption kWh/1000 h	2 kWh
EPREL Registration Number	397,639
CE mark	Yes
EU RoHS compliant	Yes
<b>Product Data</b>	
Full product code	871869681171900

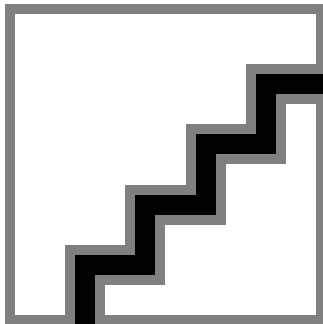
Order product name	CoreProLEDspot ND1.8-30W R39 E14 827 36D
Order code	929001890902
Numerator - Quantity Per Pack	1
Numerator - Packs per outer box	6
Material number (12NC)	929001890902
Full product name	CoreProLEDspot ND1.8-30W R39 E14 827 36D
EAN/UPC - Case	8718696811726

## Dimensional drawing

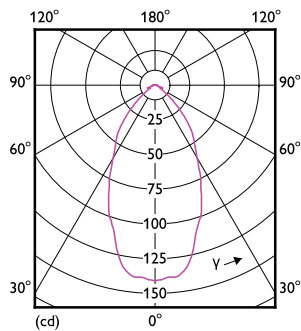


Product	D	C
CoreProLEDspot ND1.8-30W R39 E14 827 36D	39 mm	65 mm

## Photometric data



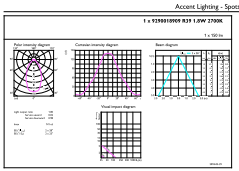
Spectral Power Distribution Colour - CoreProLEDspot ND1.8-30W R39 E14 827 36D



Light Distribution Diagram - CoreProLEDspot ND1.8-30W R39 E14 827 36D

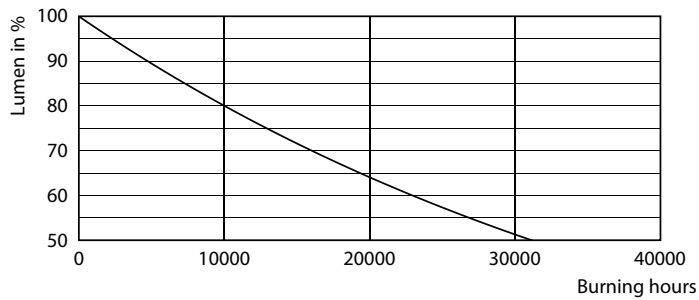
# CorePro LEDspot Reflectors

## Photometric data

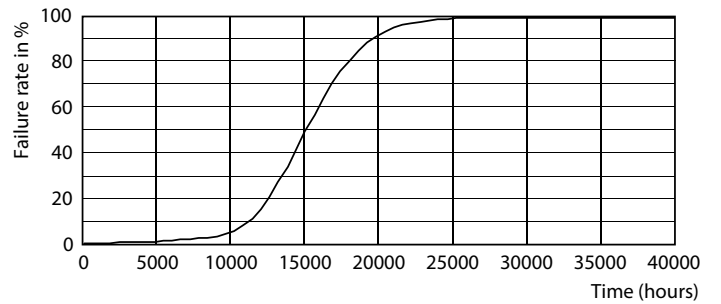


© 2023 Philips Lighting B.V. Philips Lighting B.V. Page 1/1

## Lifetime



Lumen Maintenance Diagram - CoreProLEDspot ND1.8-30W R39 E14 827 36D



Life Expectancy Diagram - CoreProLEDspot ND1.8-30W R39 E14 827 36D

