



CorePro LED PLL



CorePro LED PLL HF 24W 830 4P 2G11

Philips CorePro LED PLL is the ideal uplamping solution for downlights & luminaires in a wide range of general lighting applications. It integrates a LED light source into a traditional fluorescent form factor to offer superb energy savings over a lifetime that's twice as long as fluorescent alternatives.

Product data

General Information	
Cap-Base	2G11
Nominal lifetime	30,000 hour(s)
Switching Cycle	50,000
Lighting Technology	LED
Flux measurement reference	Sphere
Light Technical	
Color Code	830 [CCT of 3000K]
Beam Angle (Nom)	160 degree(s)
Luminous Flux	3,200 lm
Color Designation	White (WH)
Correlated Color Temperature (Nom)	3000 K
Luminous Efficacy (rated) (Nom)	133.00 lm/W
Color Consistency	<6
Color rendering index (CRI)	83
LLMF At End Of Nominal Lifetime (Nom)	70 %
Photobiological safety according to EN 62471	RG0
Operating and Electrical	
Line Frequency	20000-70000 Hz
Input Frequency	20000-70000 Hz
Power Consumption	24 W

Lamp Current (Max)	600 mA
Lamp Current (Min)	400 mA
Starting Time (Nom)	0.5 s
Warm-up time to 60% light	0.5 s
Power Factor (Fraction)	0.9
Voltage (Nom)	53-77 V
Ballast Compatibility	HF
LED alternative to fluorescent lamp power	55 W
Inrush current at mains	-
Max. lamp no. on MCB B type 10A - Mains	-
Max. lamp no. on MCB B type 10A – EM ballast without Compensation Capacitor.	-
Max. lamp no. on MCB B type 10A – EM ballast with Compensation Capacitor.	-
Max. lamp no. on MCB B type 16A - Mains	-
Max. lamp no. on MCB B type 16A – EM ballast without Compensation Capacitor.	-
Max. lamp no. on MCB B type 16A – EM ballast with Compensation Capacitor.	-

Temperature	
T-Case Maximum (Nom)	70 °C

CorePro LED PLL

Controls and Dimming

Dimmable	No
----------	----

Mechanical and Housing

Product Length	528 mm
Bulb Shape	PL-L
Net Weight (Piece)	0.160 kg

Approval and Application

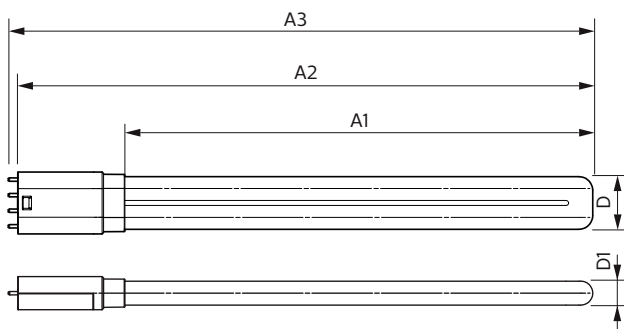
Energy Efficiency Class	E
Energy Saving Product	Yes
Approval Marks	RoHS compliance
Energy Consumption kWh/1000 h	24 kWh
EPREL Registration Number	387355
CE mark	Yes
EU RoHS compliant	Yes

Ambient temperature range	-20 °C to 45 °C
---------------------------	-----------------

Product Data

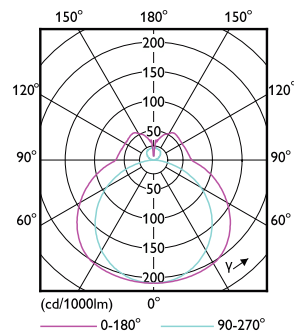
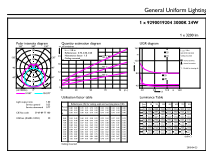
Order product name	CorePro LED PLL HF 24W 830 4P 2G11
Full product name	CorePro LED PLL HF 24W 830 4P 2G11
Full product code	871869682839700
Order code	929001920402
Material Nr. (12NC)	929001920402
Numerator - Quantity Per Pack	1
EAN/UPC - Product/Case	8718696828397
Numerator - Packs per outer box	10
EAN/UPC - Case	8718696828403

Dimensional drawing



Product	D1	D2	A1	A2	A3
CorePro LED PLL HF 24W 830 4P 2G11	17 mm	38 mm	453 mm	528 mm	535 mm

Photometric data

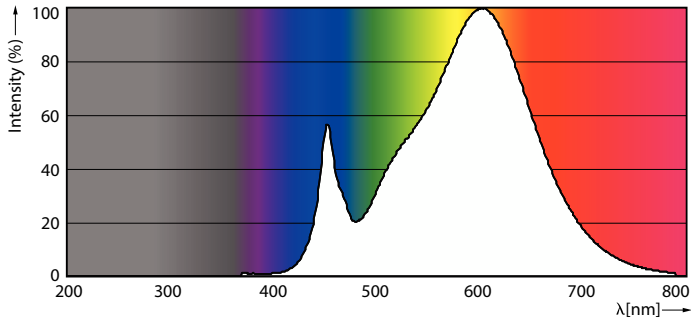


General uniform lighting - CorePro LED PLL HF 24W 830 4P 2G11

Light Distribution Diagram - CorePro LED PLL HF 24W 830 4P 2G11

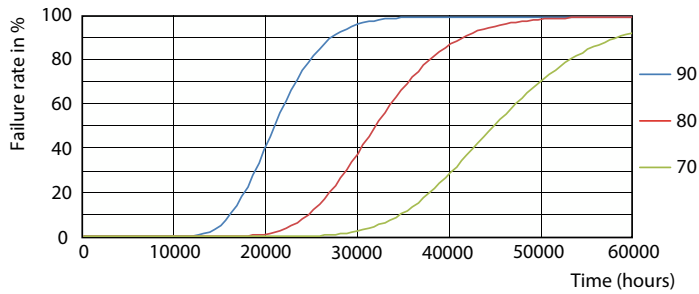
CorePro LED PLL

Photometric data

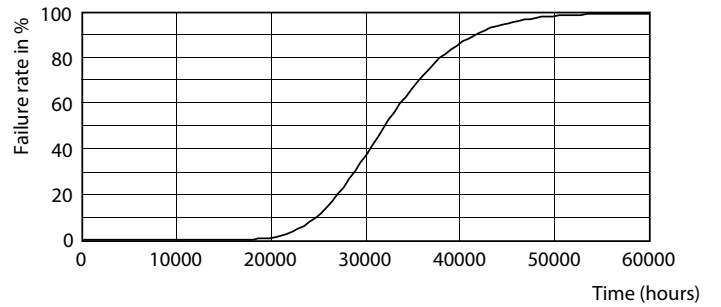


Spectral Power Distribution Colour - CorePro LED PLL HF 24W 830 4P 2G11

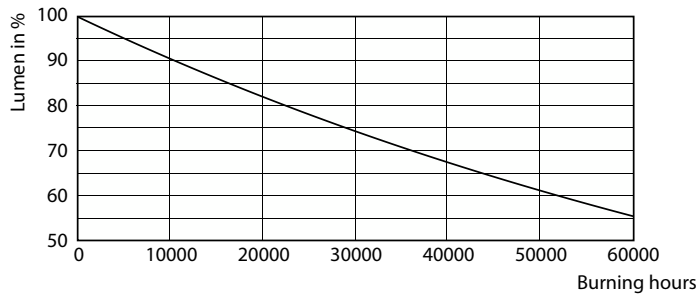
Lifetime



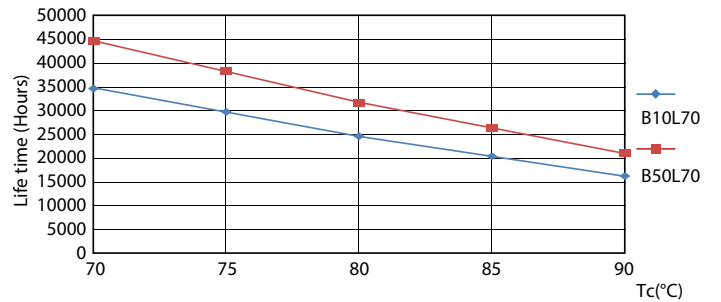
LEDtube CorePro PLL HF 24W 2G11 830 24D ND



LEDtube CorePro PLL HF 24W 2G11 830 24D ND



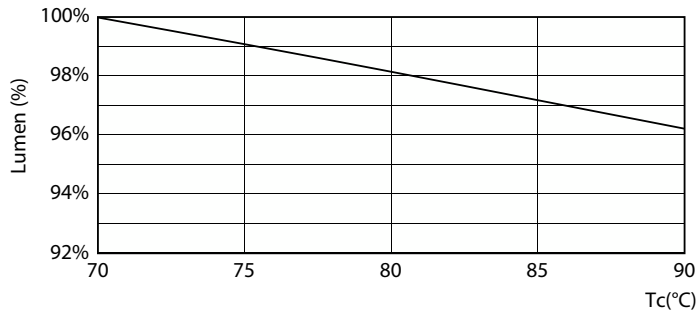
Lumen Maintenance Diagram - CorePro LED PLL HF 24W 830 4P 2G11



LEDtube CorePro PLL HF 24W 2G11 830 24D ND

CorePro LED PLL

Lifetime



Lumen Maintenance Diagram - CorePro LED PLL HF 24W 830 4P 2G11

