

CorePro LED PLT 4P



CorePro LED PLT HF 18.5W 840 4P GX24q-4

The CorePro LED PLT 4P integrates a LED light source into a traditional fluorescent form factor. This product is the ideal solution for uplampping in general lighting applications: it meets basic lighting requirements, offers significant energy savings, and is environmentally friendly

Product data

General Information		Lamp Current (Max)	
Cap-Base	GX24q-4		400 mA
Nominal lifetime	30,000 hour(s)	Lamp Current (Min)	250 mA
Switching Cycle	200,000	Starting Time (Nom)	0.5 s
Lighting Technology	LED	Warm-up time to 60% light	0.5 s
Flux measurement reference	Sphere	Power Factor (Fraction)	0.9
		Voltage (Nom)	20-60 V
		Ballast Compatibility	HF
		LED alternative to fluorescent lamp power	42 W
		Inrush current at mains	-
		Max. lamp no. on MCB B type 10A - Mains	-
		Max. lamp no. on MCB B type 10A – EM ballast without Compensation Capacitor.	-
		Max. lamp no. on MCB B type 10A – EM ballast with Compensation Capacitor.	-
		Max. lamp no. on MCB B type 16A - Mains	-
		Max. lamp no. on MCB B type 16A – EM ballast without Compensation Capacitor.	-
		Max. lamp no. on MCB B type 16A – EM ballast with Compensation Capacitor.	-
Light Technical		Temperature	
Color Code	840 [CCT of 4000K]	T-Case Maximum (Nom)	75 °C
Beam Angle (Nom)	120 degree(s)		
Luminous Flux	2,250 lm		
Color Designation	Cool White (CW)		
Correlated Color Temperature (Nom)	4000 K		
Luminous Efficacy (rated) (Nom)	121 lm/W		
Color Consistency	<6		
Color rendering index (CRI)	82		
LLMF At End Of Nominal Lifetime (Nom)	70 %		
Photobiological safety according to EN 62471	RG1		
Operating and Electrical			
Line Frequency	20K-80K Hz		
Input Frequency	20K-80K Hz		
Power Consumption	18.5 W		

CorePro LED PLT 4P

Controls and Dimming

Dimmable	No
----------	----

Mechanical and Housing

Bulb Finish	Frosted
Bulb Material	Plastic
Product Length	151 mm
Bulb Shape	PL-T
Net Weight (Piece)	0.135 kg

Approval and Application

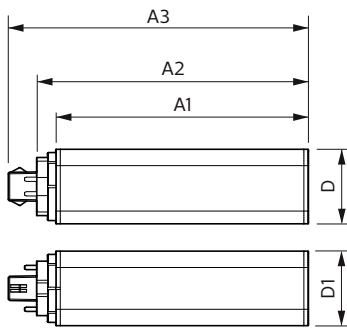
Energy Efficiency Class	E
Energy Saving Product	Yes
Approval Marks	RoHS compliance KEMA Keur certificate
Energy Consumption kWh/1000 h	19 kWh
EPREL Registration Number	1361427
CE mark	Yes

EU RoHS compliant	Yes
Ambient temperature range	-20 °C to 35 °C

Product Data

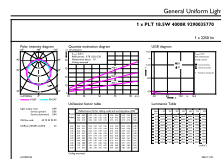
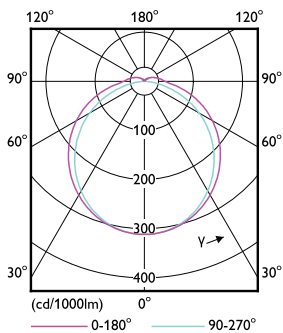
Order product name	CorePro LED PLT HF 18.5W 840 4P GX24q-4
Full product name	CorePro LED PLT HF 18.5W 840 4P GX24q-4
Full product code	871951448790100
Order code	929003577002
Material Nr. (12NC)	929003577002
Numerator - Quantity Per Pack	1
EAN/UPC - Product/Case	8719514487901
Numerator - Packs per outer box	20
EAN/UPC - Case	8719514487918

Dimensional drawing



Product	D1	D2	A1	A2	A3
CorePro LED PLT HF 18.5W 840 4P GX24q-4	42 mm	42 mm	139 mm	151 mm	166 mm

Photometric data

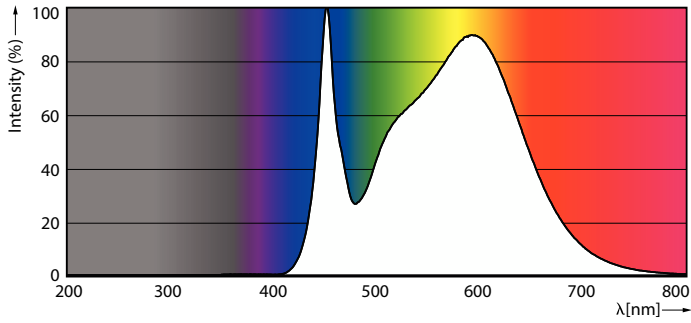


Light Distribution Diagram - CorePro LED PLT HF 18.5W 840 4P GX24q-4

General uniform lighting - CorePro LED PLT HF 18.5W 840 4P GX24q-4

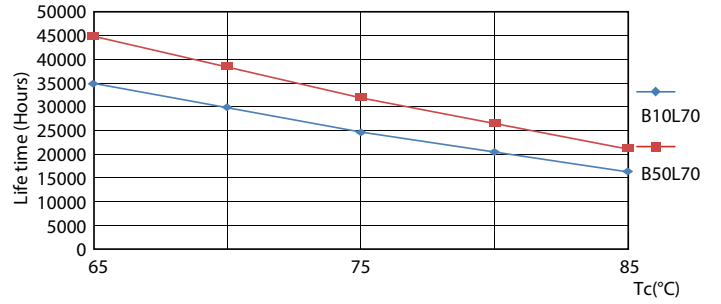
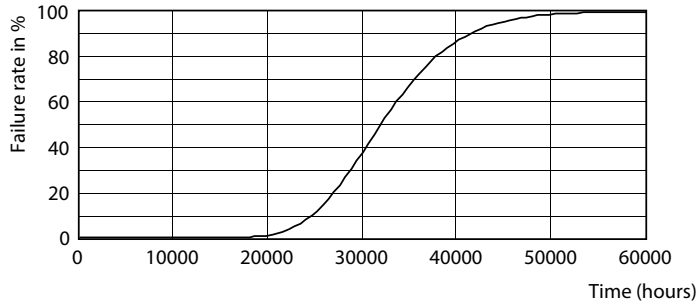
CorePro LED PLT 4P

Photometric data



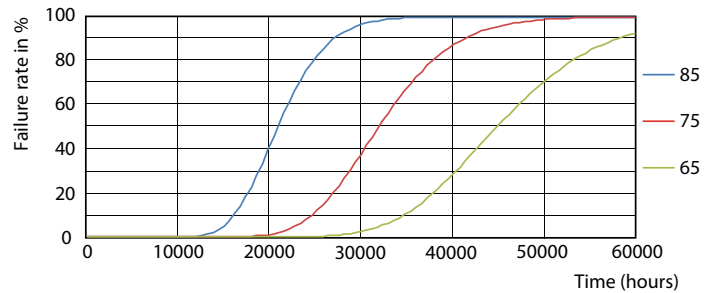
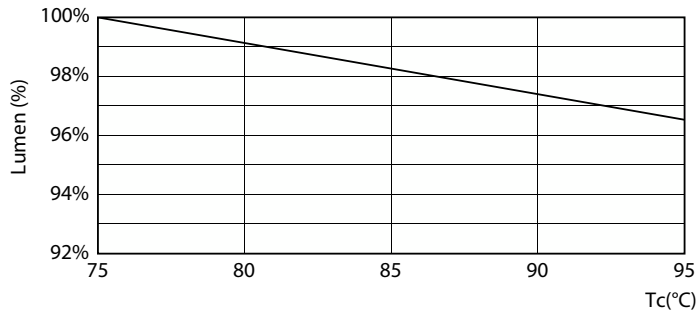
Spectral Power Distribution Colour - CorePro LED PLT HF 18.5W 840 4P
GX24q-4

Lifetime



Life Expectancy Diagram

LifetimeVsTc

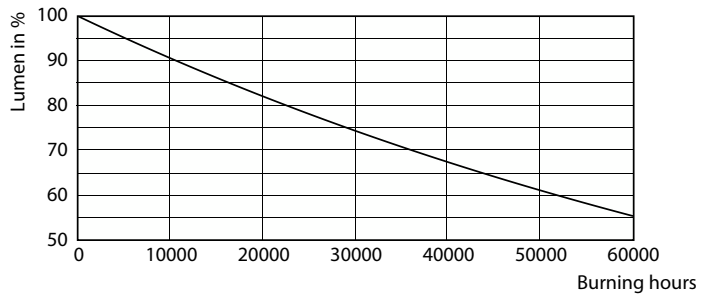


Lumen Maintenance Diagram - CorePro LED PLT HF 18.5W 840 4P GX24q-4

FailureRate

CorePro LED PLT 4P

Lifetime



Lumen Maintenance Diagram - CorePro LED PLT HF 18.5W 840 4P GX24q-4

