

PRODUCT DATASHEET

HQI-TS 70 W/D

POWERSTAR HQI®-TS EXCELLENCE | Metal halide lamps with quartz technology for enclosed luminaires



Areas of application

- Shop interiors, shop windows
- Shopping arcades
- Foyers, reception areas
- Buildings, monuments, bridges
- Museums, exhibitions
- Exhibition halls and trade fairs
- Pedestrian zones, public squares
- Parks and gardens
- Approved only for use in enclosed luminaires
- Outdoor applications only in suitable luminaires

Product benefits

- High efficiency
- Uniform distribution of light
- Good to excellent color rendering
- Hot restrike capable
- UV values significantly below the maximum permitted thresholds to IEC 61167 thanks to UV filter

Product features

- POWERSTAR® quartz technology
- Light colors: warm white (WDL), neutral white (NDL), daylight (D), cool daylight (CD)



TECHNICAL DATA

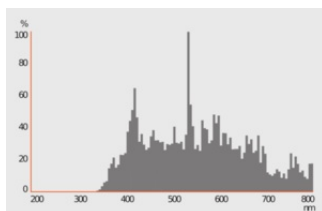
Electrical data

Nominal wattage	70 W
Construction wattage	81.50 W
Nominal voltage	92 V
Ignition voltage	13.3 kVp ¹⁾
Operating mode	Conventional control gear (CCG) and ignitor, Electronic control gear (ECG)
Nominal current	0.95 A
PFC capacitor at 50 Hz	12 µF

1) Minimum / Maximum

Photometrical data

Luminous flux	6200 lm
Luminous efficacy	76 lm/W
Color temperature	5350 K
Color rendering index Ra	≤ 75
Light color	753
Rated LLMF at 2,000 h	0.95
Rated LLMF at 4,000 h	0.93
Rated LLMF at 6,000 h	0.85
Rated LLMF at 8,000 h	0.82
Rated LLMF at 12,000 h	0.75
UV protection	Yes



Dimensions & Weight

Overall length	117.00 mm
----------------	-----------

Light center length (LCL)	57,0 mm
Diameter	19,0 mm
Product weight	17.00 g

Temperatures & operating conditions

Maximum permitted outer bulb temperature	500 °C
Maximum permitted pinch temperature	350 °C

Lifespan

Rated lamp survival factor at 2,000 h	0.95
Rated lamp survival factor at 4,000 h	0.90
Rated lamp survival factor at 6,000 h	0.85
Rated lamp survival factor at 8,000 h	0.80
Rated lamp survival factor at 12,000 h	0.50
Lifespan B50	12000 h

Additional product data

Base (standard designation)	RX7s
Mercury content	9.9 mg
Design / version	Clear

Capabilities

Dimmable	No
Burning position	P45
Enclosed luminaire required	Yes
Hot restart	Yes

Certificates & Standards

Energy efficiency class	G
Energy consumption	82.00 kWh/1000h

Country-specific categorizations

ILCOS	MD/UB-70/856-H/E/SL-RX7s-19/117/H
Order reference	HQI-TS 70W/D/EX

Energy labelling regulation data acc EU 2019/2015

Lighting technology used	MH
Non-directional or directional	NDLS

Mains or non-mains	NMLS
Light source cap-type (or other electric interface)	RX7s
Connected light source (CLS)	No
Color-tuneable light source	No
Envelope	SECOND
High luminance light source	No
Anti-glare shield	No
Correlated colour temperature type	SINGLE_VALUE
Claim of equivalent power	No
Length	117.00 mm
Height	19,0 mm
Width	19,0 mm
Chromaticity coordinate x	0,330
Chromaticity coordinate y	0,350
Beam angle correspondence	SPHERE_360
EPREL ID	546547
Model number	AC34321

DOWNLOAD DATA

Documents and certificates



User instruction



Declarations Of Conformity CE



Certificates

Photometric and lighting design files



Spectral power distribution

LOGISTICAL DATA

Product code	Packaging unit (Pieces/Unit)	Dimensions (length x width x height)	Gross weight	Volume
4008321678348	Folding box 1	35 mm x 35 mm x 121 mm	26.00 g	0.15 dm ³

Product code	Packaging unit (Pieces/Unit)	Dimensions (length x width x height)	Gross weight	Volume
4008321678355	Shipping box 12	149 mm x 116 mm x 135 mm	410.00 g	2.33 dm ³

The mentioned product code describes the smallest quantity unit which can be ordered. One shipping unit can contain one or more single products. When placing an order, for the quantity please enter single or multiples of a shipping unit.

DISCLAIMER

Subject to change without notice. Errors and omission excepted. Always make sure to use the most recent release.