



MASTER Value LEDtube Universal T8

MAS LEDtube VLE UN 1200mm UO 15.5W840 T8

The new Philips MASTER Value LEDtube Universal T8 brings ease and simplicity to your lighting project. That's because you do not need to match the driver technology anymore: a unique design enables the Philips MASTER Value LEDtube Universal T8 to directly fit in luminaires operating on either electromagnetic ballasts or HF electronic ballasts or mains power connection. It is so simple to operate and you no longer need to stock two types of tubes! Perfectly safe, reliable & easy to install Philips MASTER Value LEDtube Universal T8 is the ideal alternative to standard fluorescent tubes to maximize value over lifetime with high energy saving and lower maintenance costs.

Product data

| General Information | |
|----------------------------|---------------------------------|
| Cap-Base | G13 [Medium Bi-Pin Fluorescent] |
| Nominal lifetime | 60,000 hour(s) |
| Switching Cycle | 50,000 |
| Lighting Technology | LED |
| Flux measurement reference | Sphere |

| Light Technical | |
|------------------------------------|--------------------|
| Color Code | 840 [CCT of 4000K] |
| Beam Angle (Nom) | 190 degree(s) |
| Luminous Flux | 2,500 lumen |
| Color Designation | Cool White (CW) |
| Correlated Color Temperature (Nom) | 4000 K |
| Luminous Efficacy (rated) (Nom) | 161 lm/W |
| Color Consistency | <6 |
| Color rendering index (CRI) | 80 |

| LLMF At End Of Nominal Lifetime (Nom) 70 % | |
|--|--|
|--|--|

| Operating and Electrical | |
|---------------------------|-------------|
| Line Frequency | 50 to 60 Hz |
| Input Frequency | 50 to 60 Hz |
| Power Consumption | 15.5 W |
| Lamp Current (Nom) | 75 mA |
| Starting Time (Nom) | 0.5 s |
| Warm-up time to 60% light | 0.5 s |
| Power Factor (Fraction) | 0.9 |
| Voltage (Nom) | 220-240 V |

| Temperature | |
|---------------------------|-----------------|
| Ambient temperature range | -20 °C to 45 °C |
| T-Case Maximum (Nom) | 55 °C |

MASTER Value LEDtube Universal T8

Controls and Dimming

| | |
|----------|----|
| Dimmable | No |
|----------|----|

Mechanical and Housing

| | |
|----------------|--------------------|
| Bulb Finish | Frosted |
| Bulb Material | Glass |
| Product Length | 1,200 mm |
| Bulb Shape | Tube, double-ended |

Approval and Application

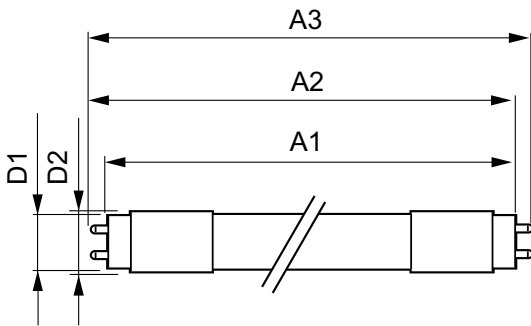
| | |
|-------------------------------|--|
| Energy Saving Product | Yes |
| Approval Marks | RoHS compliance TUV CE marking KEMA Keur certificate |
| Energy Consumption kWh/1000 h | 16 kWh |
| EPREL Registration Number | 403,659 |
| CE mark | Yes |

| | |
|-------------------|-----|
| EU RoHS compliant | Yes |
|-------------------|-----|

Product Data

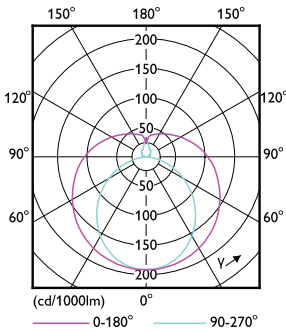
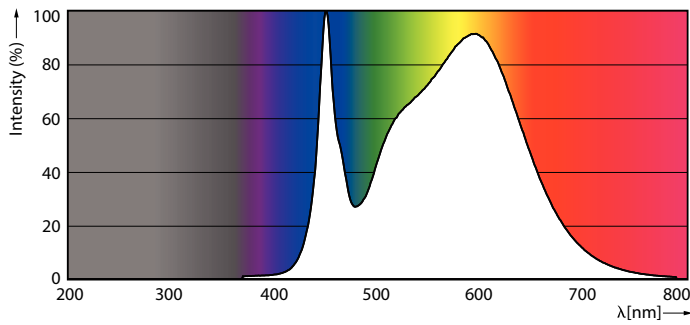
| | |
|---------------------------------|--|
| Full product code | 871951431670600 |
| Order product name | MAS LEDtube VLE UN 1200mm UO 15.5W840 T8 |
| Order code | 929002997102 |
| Numerator - Quantity Per Pack | 1 |
| Numerator - Packs per outer box | 10 |
| Material number (12NC) | 929002997102 |
| Full product name | MAS LEDtube VLE UN 1200mm UO 15.5W840 T8 |
| EAN/UPC - Case | 8719514316713 |

Dimensional drawing



| Product | D1 | D2 | A1 | A2 | A3 |
|--|-------|-------|----------|----------|----------|
| MAS LEDtube VLE UN 1200mm UO 15.5W840 T8 | 26 mm | 28 mm | 1,199 mm | 1,205 mm | 1,213 mm |

Photometric data

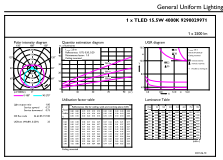


Spectral Power Distribution Colour - MAS LEDtube VLE UN 1200mm UO 15.5W840 T8

Light Distribution Diagram - MAS LEDtube VLE UN 1200mm UO 15.5W840 T8

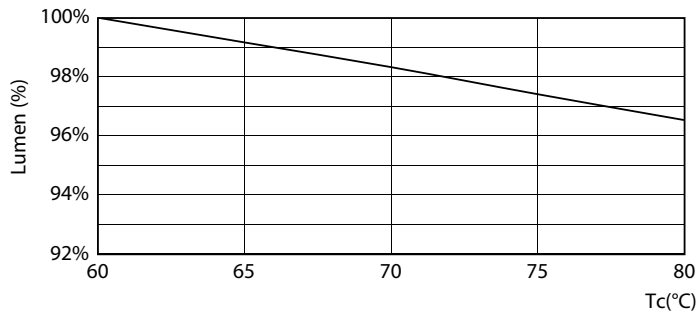
MASTER Value LEDtube Universal T8

Photometric data

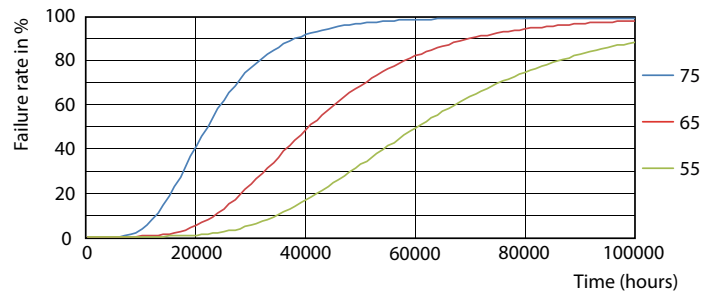


© 2023 Philips Lighting B.V. Page 11

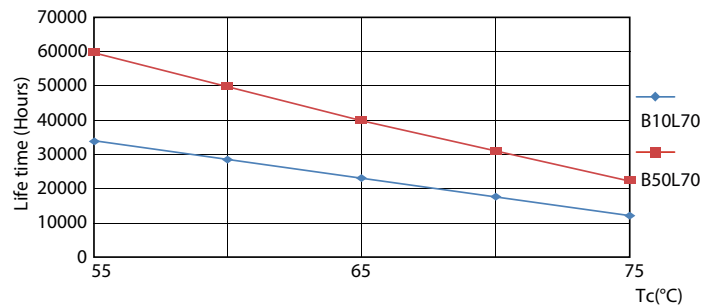
Lifetime



Lumen Maintenance Diagram - MAS LEDtube VLE UN 1200mm UO 15.5W840 T8



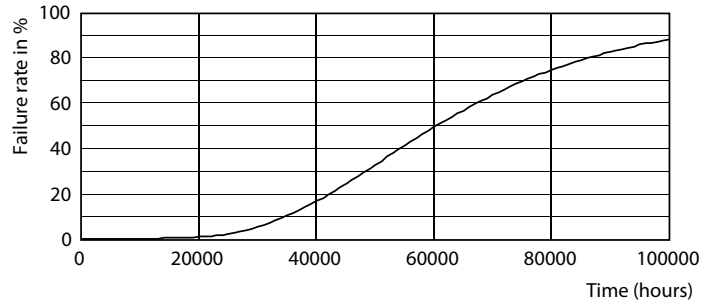
Life Expectancy Diagram - MAS LEDtube VLE UN 1200mm UO 15.5W840 T8



Life Expectancy Diagram - MAS LEDtube VLE UN 1200mm UO 15.5W840 T8

MASTER Value LEDtube Universal T8

Lifetime



Lumen Maintenance Diagram - MAS LEDtube VLE UN 1200mm UO 15.5W840 T8

Life Expectancy Diagram - MAS LEDtube VLE UN 1200mm UO 15.5W840 T8

