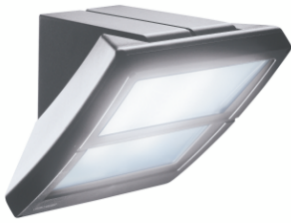


# Product Data Sheet

## GWS2402

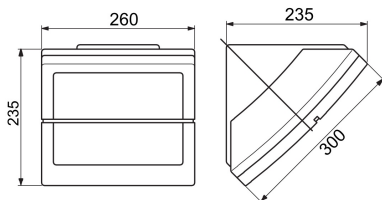
EXTRO Range



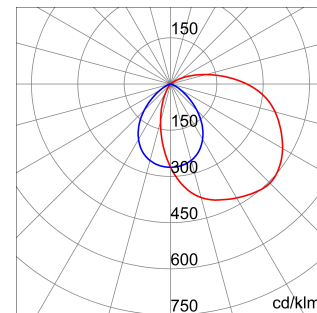
Multifunctional lighting device for residential and urban areas, with polycarbonate body and sanded diffuser. Possibility of wall, ceiling, pole and column installation in graphite grey, white and midnight blue colors. Also available in the 13W and 26W LED version.

Application	Indoor / Outdoor	Version	LED
Voltage	220/240 V - 50/60 Hz - Stand alone	Insulation class	I
Colour	Graphite grey	IP degree	IP55
Mechanical resistance	IK09	Glow Wire Test	850 °C
Minimum distance from the illuminated object	1 m	Operating temperature	-25 +25 °C
Lamp holder	LED	Nominal flux (lm)	2400
Lamp	LED	System power	26 W
Colour temperature	4000 K (CRI 90)	Lumen output (lm)	1950
Efficiency class of integrated LEDs	A ÷ A++	Type of light source	LED - Not replaceable
Weight (kg)	2.4	Warranty	Can be extended
Electrocod	2424	LED Life Time (L70B50)	50000 h

### DIMENSIONAL



### PHOTOMETRIC DISTRIBUTION



### TECHNICAL SYMBOLOGY



**IP**  
IP55

**IK**  
IK09

**GWT**  
850 °C



**EXTENDED WARRANTY**

### STANDARDS/APPROVALS

