



# MASTER LEDtube T8 Ultra Efficient

## MAS LEDtube 1200mm UE 13.5W 840 T8

With energy prices rising and the EU's Green Deal2 continuing to fund energy efficient building renovations, many are looking into make their company's lighting more sustainable. The new Philips MASTER LEDtube Ultra Efficient T8 is a true breakthrough on the way to more sustainable lighting. It replaces your current fluorescent tube or LED tube directly and offers immediately great energy cost reduction as well as a much longer lifetime!

### Product data

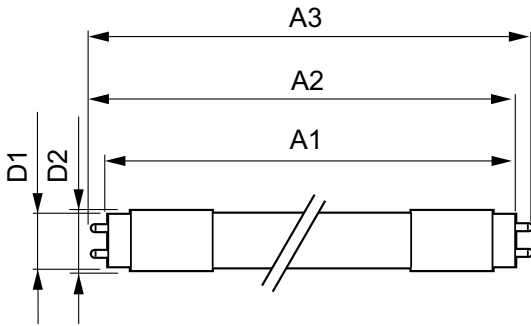
General Information		Operating and Electrical	
Cap-Base	G13 ROT (Rotating) [Medium Bi-Pin Fluorescent]	Line Frequency	50 to 60 Hz
Nominal lifetime	75,000 hour(s)	Input Frequency	50 to 60 Hz
Switching Cycle	200,000	Power Consumption	13.5 W
Lighting Technology	LED	Starting Time (Nom)	0.5 s
Flux measurement reference	Sphere	Warm-up time to 60% light	0.5 s
		Power Factor (Fraction)	0.9
		Voltage (Nom)	220-240 V
Light Technical		Temperature	
Color Code	840 [CCT of 4000K]	Ambient temperature range	-20 °C to 45 °C
Beam Angle (Nom)	160 degree(s)	T-Case Maximum (Nom)	55 °C
Luminous Flux	2,500 lumen		
Color Designation	Cool White (CW)	Controls and Dimming	
Correlated Color Temperature (Nom)	4000 K	Dimmable	No
Luminous Efficacy (rated) (Nom)	185 lm/W	Mechanical and Housing	
Color Consistency	<6	Bulb Finish	Frosted
Color rendering index (CRI)	80	Bulb Material	Plastic
LLMF At End Of Nominal Lifetime (Nom)	70 %		

# MASTER LEDtube T8 Ultra Efficient

Product Length	1,200 mm
Bulb Shape	Tube, double-ended
<b>Approval and Application</b>	
Energy Saving Product	Yes
Approval Marks	RoHS compliance TUV CE marking KEMA Keur certificate
Energy Consumption kWh/1000 h	14 kWh
EPREL Registration Number	1,205,540
CE mark	Yes
EU RoHS compliant	Yes

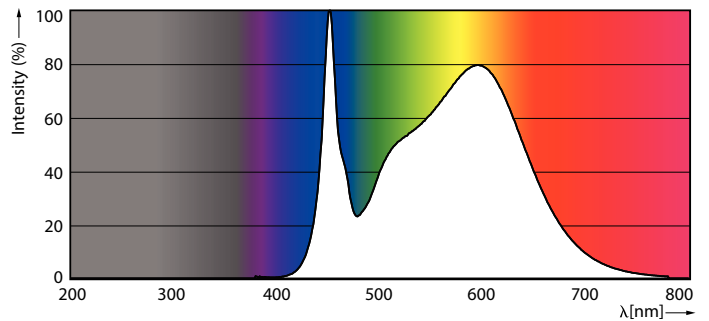
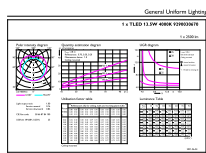
<b>Product Data</b>	
Full product code	871951433972900
Order product name	MAS LEDtube 1200mm UE 13.5W 840 T8
Order code	929003067002
Numerator - Quantity Per Pack	1
Numerator - Packs per outer box	10
Material number (12NC)	929003067002
Full product name	MAS LEDtube 1200mm UE 13.5W 840 T8
EAN/UPC - Case	8719514339736

## Dimensional drawing



Product	D1	D2	A1	A2	A3
MAS LEDtube 1200mm UE 13.5W 840 T8	25.8 mm	28 mm	1,198.2 mm	1,205.3 mm	1,212.4 mm

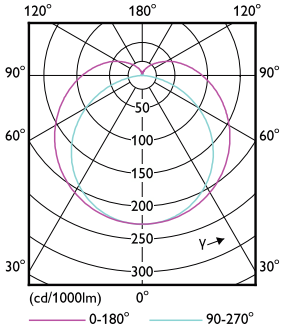
## Photometric data



Spectral Power Distribution Colour - MAS LEDtube 1200mm UE 13.5W 840 T8

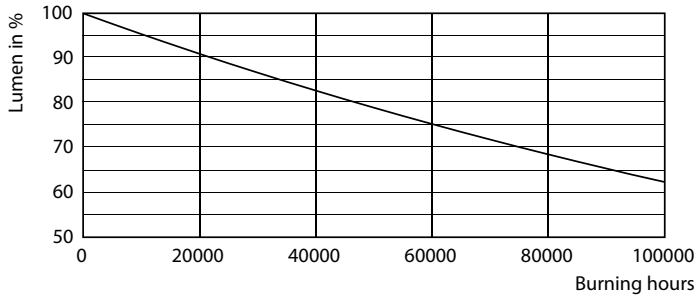
# MASTER LEDtube T8 Ultra Efficient

## Photometric data

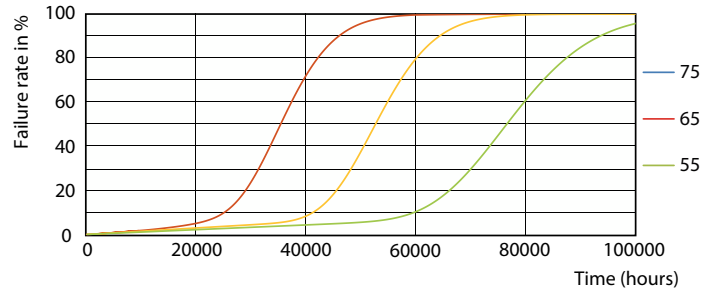


Light Distribution Diagram - MAS LEDtube 1200mm UE 13.5W 840 T8

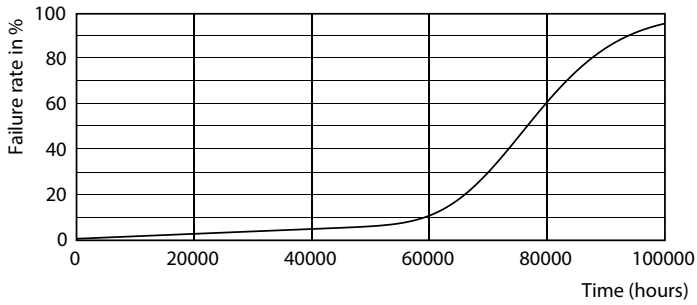
## Lifetime



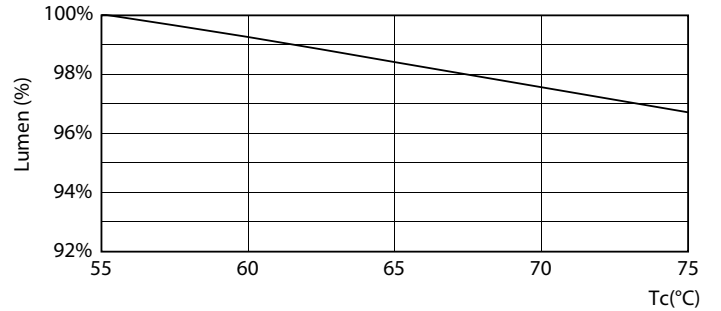
Lumen Maintenance Diagram - MAS LEDtube 1200mm UE 13.5W 840 T8



Life Expectancy Diagram - MAS LEDtube 1200mm UE 13.5W 840 T8



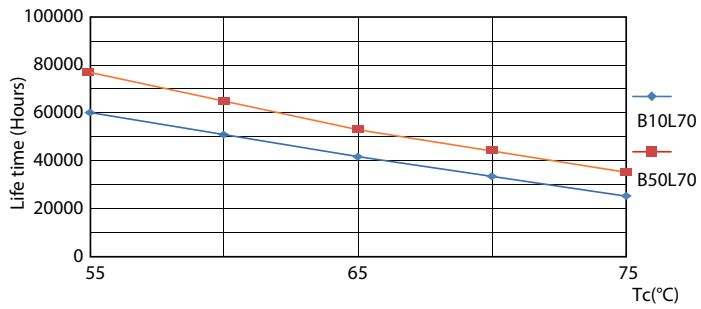
Life Expectancy Diagram - MAS LEDtube 1200mm UE 13.5W 840 T8



Lumen Maintenance Diagram - MAS LEDtube 1200mm UE 13.5W 840 T8

# MASTER LEDtube T8 Ultra Efficient

## Lifetime



Life Expectancy Diagram - MAS LEDtube 1200mm UE 13.5W 840 T8

