

# THORGEON

LIGHTING

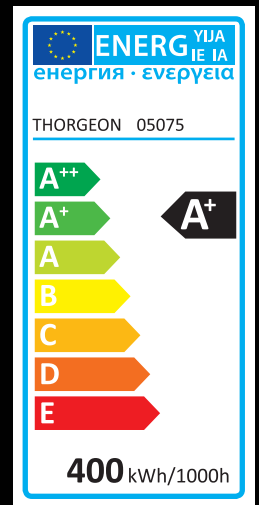
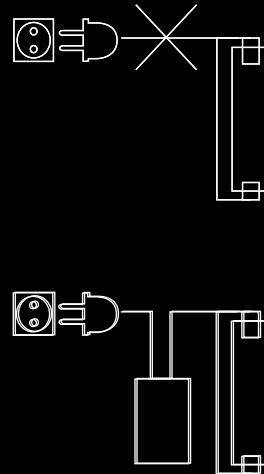
# METAL-HALIDE LAMP

05075



Scan me  
[www.thorpeon.com/05075](http://www.thorpeon.com/05075)

Manufactured in PRC



  
**LUMENS**  
36000

  
**POWER**  
400W

  
100V

  
FC2

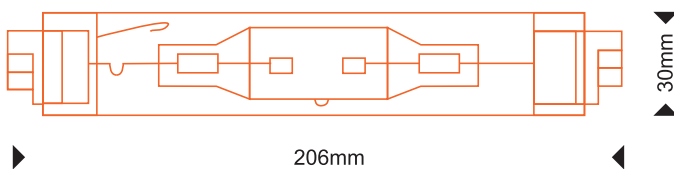
  
15000h

  
**COLOR**  
4200K

  
**CRI**  
65

  
-20°C

  
+40°C



4752280000473  
Developed in Latvia

# THORGEON

 [www.thorpeon.com](http://www.thorpeon.com)  
SIA "ATTA-1", Daugavgrivas street 77,  
Riga, Latvia, LV-1007