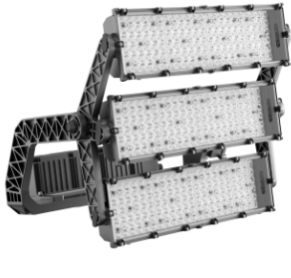


Product Data Sheet

GWP3331AG857

STADIUM PRO

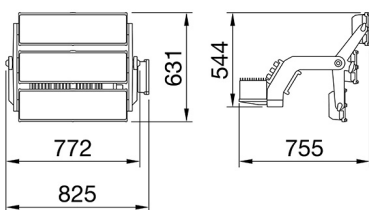


STADIUM PRO 3 is a high power LED floodlight, with an LES (light emitted surface) high emission, suitable for lighting sports facilities for professional competitive competitions. The spotlight has a graphite grey finish with trivalent treatment for maximum resistance to oxidation and is equipped with an integrated “self-cleaning” thermal dissipation system. It consists of three modules, each with a venting and non-condensing valve, protected from accidental impacts. The rotation system between the bracket and the optical modules is truncated-conical in aluminium with an integrated goniometer within the bracket for easy orientation control and fixing by means of a grub-screw, which ensure the tightness over time of each individual module. The spotlight is available in 4,000K or 5,700K colour temperatures and CRI>70, CRI>80 or CRI>90 (TLCI>80) colour rendering. The range also includes 6 types of circular optics, from 8° to 40°, 1 symmetrical/Elliptical optic and 2 asymmetric optics. The T.I.R.Ex optical system developed by GEWISS, with high transparency PMMA HT lenses, permits total control over the light beam, allowing for wide flexibility in the design environment, with high qualitative and quantitative performance. The power supply box can be fixed on the edge-bracket, or remotely, it is immune to surges of up to 10KV both in RCCB and common mode, with a single cable. The range includes a DALI2 or DMX-RDM power supply, to allow maximum flexibility in the creation of even complex light sets.

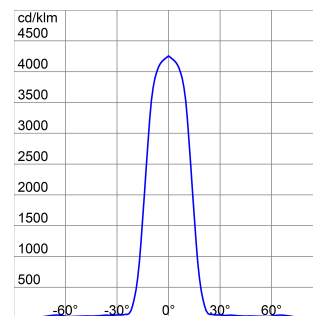
Stadium Pro is for a professional use hence the photometric data are not disclosed. We invite you to take contact with our technical and commercial teams.

GENERAL INFORMATION		OPTIC AND ILLUMINATING FEATURES	
Context	Professional sport lighting	Optic	Circular 30°
Luminaire	High power LED floodlight	Unified Glare Rating	ULOR = 0%
Application	Indoor / Outdoor	Lumen output (lm)	147000
Unique digital code (Datamatrix)	Currently not present	Efficacy (lm/W)	101
Colour	Graphite grey	Colour temperature	5700 K
Type of light source	LED	Colour Rendering Index	CRI 80
System power	1450 W	Standard Deviation Colour Matching	SDCM = 3
LED Lifetime	L90B10(Tq25°C)=40.000h; L80B10 (Tq25°C)=75.000h	Photobiological Risk Class	-
Weight (kg)	30	Standard	EN60598-1; EN60598-2-5; IEC 62471; IEC 62778
Warranty	5 years	ELETRICAL AND LIGHTING FEATURES	
Stocking temperature	-	Supply voltage	See external supply unit
Operating temperature	-25 +50 °C	Rated frequency (Hz)	See external supply unit
MATERIALS		Driver	To be ordered separately
Body	Die-cast aluminium	Driver failure rate	See external supply unit
Shield type	Flat tempered glass 4mm	Overvoltage protection	See external supply unit
Optic	T.I.R.Ex. Optical PMMA HT	Control System	See external supply unit
Gasket	Anti-aging silicone	INSTALLATION AND MAINTENANCE	
Locking Hook	-	Mounting and installation	Lighting tower - Surface
External screw	Stainless steel	Tilt	Rotation on bracket with integrated goniometer
Colour	Polyester powder coated	Wiring	Multipolar cable between floodlight and power supply
STANDARDS AND APPROVALS		Fixing	Bracket
Classification	-	Light souce replaceability	By professional
Device with reduced surface temperature	-	Controlgear replaceability	By professional
DIN 18032-3 certification	-	Driver Box	External
IPEA	-	Maximum surface exposed to the wind	0,36 m²
Insulation class	I		-
IP degree	IP66		-
Mechanical resistance	IK08		-
Glow Wire Test	-		-

DIMENSIONAL



PHOTOMETRIC DISTRIBUTION



Product Data Sheet

GWP3331AG857

STADIUM PRO

TECHNICAL SYMBOLOGY



IP
IP66

IK
IK08

GWT
-

STANDARDS/APPROVALS

