

MASTER LEDtube EM/ Mains T8

MASTER LEDtube Sensor 1500mm HO 24W840 T8

The Philips MASTER LEDtube integrates a LED light source into a traditional fluorescent form factor. Its unique design creates a perfectly uniform visual appearance which cannot be distinguished from traditional fluorescent. For those that are looking for value for money within limited budget and re-lamping efforts for better light effect and lifetime.

Warnings and Safety

- NOTES: The overall energy efficiency and light distribution of any installation that uses these lamps are determined by the design of the installation.

Product data

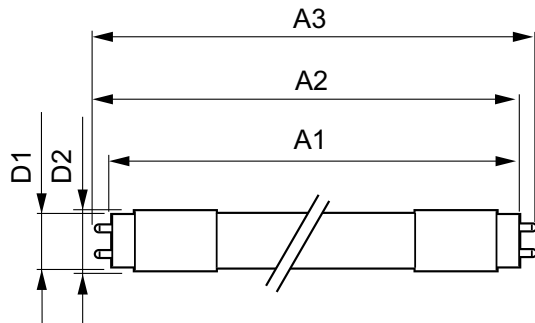
General Information		LLMF At End Of Nominal Lifetime (Nom) 70 %	
Cap-Base	G13 [Medium Bi-Pin Fluorescent]	Operating and Electrical	
EU RoHS compliant	Yes	Input Frequency	50 to 60 Hz
Nominal Lifetime (Nom)	50000 h	Power (Nom)	24 W
Switching Cycle	200000X	Lamp Current (Max)	118 mA
Light Technical		Lamp Current (Min)	98 mA
Color Code	840 [CCT of 4000K]	Starting Time (Nom)	0.5 s
Beam Angle (Nom)	240 °	Warm Up Time to 60% Light (Nom)	0.5 s
Luminous Flux (Nom)	3100 lm	Power Factor (Nom)	0.9
Color Designation	Cool White (CW)	Voltage (Nom)	220-240 V
Correlated Color Temperature (Nom)	4000 K	Temperature	
Luminous Efficacy (rated) (Nom)	129.00 lm/W	T-Ambient (Max)	45 °C
Color Consistency	<6	T-Ambient (Min)	-20 °C
Color Rendering Index (Nom)	83	T-Storage (Max)	65 °C

MASTER LEDtube EM/Mains T8

T-Storage (Min)	-40 °C
T-Case Maximum (Nom)	60 °C
Controls and Dimming	
Dimmable	Yes
Mechanical and Housing	
Bulb Material	Glass
Product Length	1500 mm
Approval and Application	
Energy Efficiency Label (EEL)	A++
Energy Saving Product	Yes
Approval Marks	CE marking RoHS compliance KEMA Keur certificate

Energy Consumption kWh/1000 h	24 kWh
Product Data	
Full product code	871869680606700
Order product name	MASTER LEDtube Sensor 1500mm HO 24W840 T8
EAN/UPC - Product	8718696806067
Order code	929001878702
Numerator - Quantity Per Pack	1
Numerator - Packs per outer box	10
Material Nr. (12NC)	929001878702
Net Weight (Piece)	0.270 kg

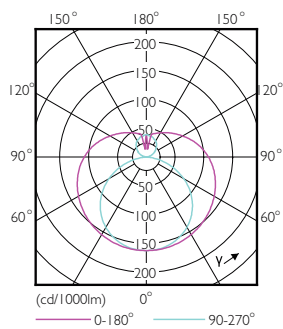
Dimensional drawing



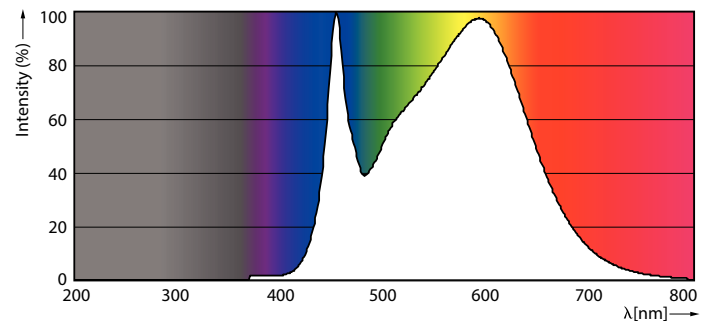
TLED 1500mm 24-58W 3100lm 4000K G13 D

Product	D1	D2	A1	A2	A3
MASTER LEDtube Sensor 1500mm HO 24W840 T8	25.8 mm	28 mm	1500 mm	1507.1 mm	1514.2 mm

Photometric data



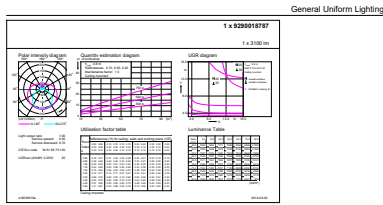
16-5W G13 840 4000K



16-5W G13

MASTER LEDtube EM/Mains T8

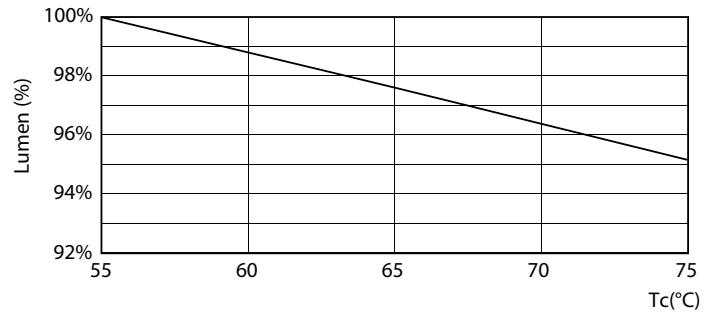
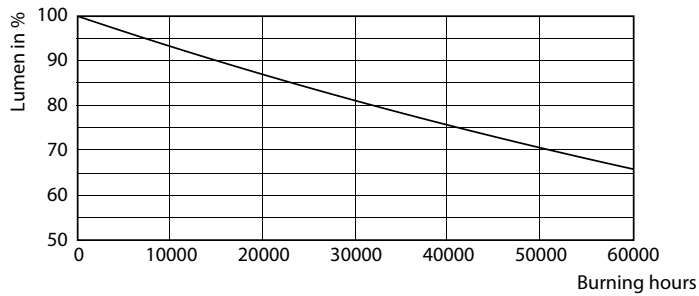
Photometric data



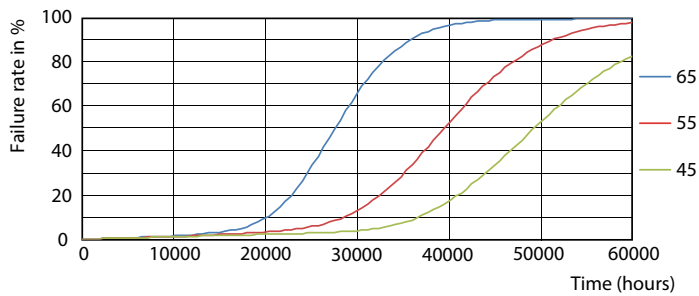
Kalux Photometric 4.5 Philips Lighting B.V. Page 1/1

24W G13 840 4000K

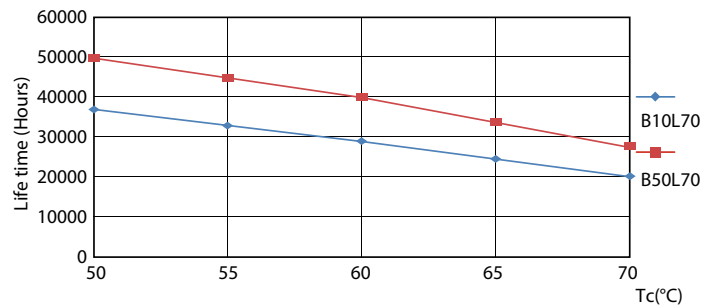
Lifetime



16-5W G13



24W G13

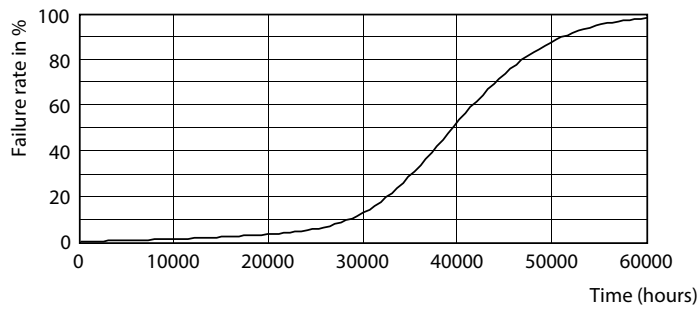


16-5W G13

16-5W G13

MASTER LEDtube EM/Mains T8

Lifetime



16-5W G13

