

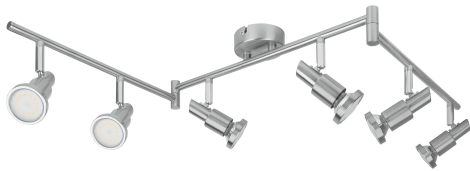
PRODUCT DATASHEET

LED SPOT GU10 6x3 W 2700

LED SPOT | Ceiling mounted luminaires available as GU10 or G9 spot luminaires

Areas of application

- Indoor applications
- Corridors, entrance areas, stairwells, living rooms, basements
- Kitchens, workspaces
- Ceiling and wall surface mounting



Product benefits

- Energy savings of up to 90 % compared to halogen lamp spotlights
- Timeless design
- Flexible thanks to replaceable LED lamps
- Easy mounting

Product features

- Luminaire family features five versions with up to 6 spot heads
- Available as GU10 or G9 spot luminaires
- Housing surface made of brushed nickel
- G9 spot versions with diffuser made of frosted glass
- Adjustable head



TECHNICAL DATA

Electrical data

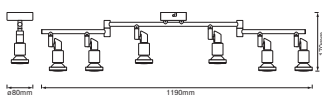
Nominal wattage	18.00 W
Nominal voltage	220...240 V
Mains frequency	50...60 Hz
Power factor λ	> 0.4
Protection class	I
Operating mode	Mains voltage

Photometrical data

Luminous flux	1440 lm
Luminous efficacy	80 lm/W
Color temperature	2700 K
Light color (designation)	Warm White
Color rendering index Ra	> 80
Beam angle	120 °

Dimensions & Weight

Length	1190.00 mm
Width	80.00 mm
Height	170.00 mm
Product weight	1300.00 g



Materials & Colors

Product color	Gray
Housing color	Gray
Body material	Aluminum
Mercury content	0.0 mg

Application & Mounting

Ambient temperature range	-20...+40 °C
Type of connection	Screw terminal
Type of protection	IP20
Dimmable	No
Mounting type	Surface
Mounting location	Ceiling
Application environment	Indoor
Adjustable	Yes
With light source	Yes
Holder designation	GU10

Lifespan

Lifespan L70/B50 at 25 °C	25000 h
Number of switching cycles	15000

Certificates & Standards

Standards	CE / EAC / REACH / RoHS
-----------	-------------------------




Additional product data

Number of illuminants	6
-----------------------	---

EQUIPMENT / ACCESSORIES

- Equipped with PAR16 or PIN G9 LED lamps
- Complete mounting and connecting accessories included

DOWNLOAD DATA

DOWNLOAD DATA	
	User instruction
	Declarations Of Conformity CE
	Packaging insert

LOGISTICAL DATA

Product code	Packaging unit (Pieces/Unit)	Dimensions (length x width x height)	Gross weight	Volume
4058075260863	Folding box 1	162 mm x 122 mm x 442 mm	1565.00 g	8.67 dm ³
4058075260870	Shipping box 8	525 mm x 460 mm x 360 mm	13470.00 g	86.94 dm ³

The mentioned product code describes the smallest quantity unit which can be ordered. One shipping unit can contain one or more single products. When placing an order, for the quantity please enter single or multiples of a shipping unit.

DISCLAIMER

Subject to change without notice. Errors and omission excepted. Always make sure to use the most recent release.