



MASTER Value LEDtube Universal T8



MAS LEDtube VLE UN 1200mm UO 15.5W840 T8

The new Philips MASTER Value LEDtube Universal T8 brings ease and simplicity to your lighting project. That's because you do not need to match the driver technology anymore: a unique design enables the Philips MASTER Value LEDtube Universal T8 to directly fit in luminaires operating on either electromagnetic ballasts or HF electronic ballasts or mains power connection. It is so simple to operate and you no longer need to stock two types of tubes! Perfectly safe, reliable & easy to install Philips MASTER Value LEDtube Universal T8 is the ideal alternative to standard fluorescent tubes to maximize value over lifetime with high energy saving and lower maintenance costs.

Product data

General Information		LLMF At End Of Nominal Lifetime (Nom)	
Cap-Base	G13 [Medium Bi-Pin Fluorescent]		70 %
Nominal lifetime	60,000 hour(s)	Photobiological safety according to EN 62471	RG0
Switching Cycle	50,000		
Lighting Technology	LED	Operating and Electrical	
Flux measurement reference	Sphere	Line Frequency	50 to 60 Hz
		Input Frequency	50 to 60 Hz
		Power Consumption	15.5 W
		Lamp Current (Nom)	75 mA
		Starting Time (Nom)	0.5 s
		Warm-up time to 60% light	0.5 s
		Power Factor (Fraction)	0.9
		Voltage (Nom)	220-240 V
		Ballast Compatibility	Universal
		LED alternative to fluorescent lamp power	36 W
		Inrush current at mains	8.6
		Max. lamp no. on MCB B type 10A - Mains	89
Light Technical			
Color Code	840 [CCT of 4000K]		
Beam Angle (Nom)	190 degree(s)		
Luminous Flux	2,500 lm		
Color Designation	Cool White (CW)		
Correlated Color Temperature (Nom)	4000 K		
Luminous Efficacy (rated) (Nom)	161 lm/W		
Color Consistency	<6		
Color rendering index (CRI)	80		

MASTER Value LEDtube Universal T8

Max. lamp no. on MCB B type 10A – EM ballast without Compensation Capacitor.	105
Max. lamp no. on MCB B type 10A – EM ballast with Compensation Capacitor.	19
Max. lamp no. on MCB B type 16A – Mains	143
Max. lamp no. on MCB B type 16A – EM ballast without Compensation Capacitor.	168
Max. lamp no. on MCB B type 16A – EM ballast with Compensation Capacitor.	30

Temperature

T-Case Maximum (Nom)	50 °C
----------------------	-------

Controls and Dimming

Dimmable	No
----------	----

Mechanical and Housing

Bulb Finish	Frosted
Bulb Material	Glass
Product Length	1,200 mm
Bulb Shape	T8
Net Weight (Piece)	0.240 kg

Approval and Application

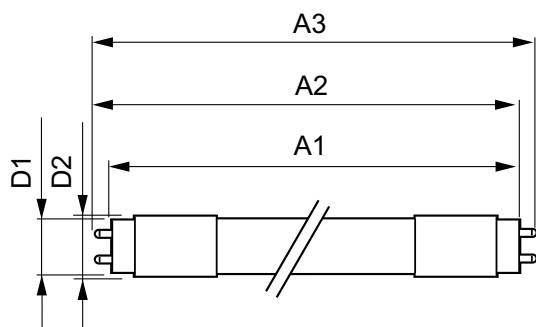
Energy Efficiency Class	C
-------------------------	---

Energy Saving Product	Yes
Approval Marks	RoHS compliance
Energy Consumption kWh/1000 h	16 kWh
EPREL Registration Number	1195914
CE mark	Yes
EU RoHS compliant	Yes
Flickering value (PstLM) - Flickering value as per EN 61000-3-3	1
Stroboscopic effect visibility measure (SVM)	0.4
Ambient temperature range	-20 to +45 °C

Product Data

Order product name	MAS LEDtube VLE UN 1200mm UO 15.5W840 T8
Full product name	MAS LEDtube VLE UN 1200mm UO 15.5W840 T8
Full product code	871951431670600
Order code	929002997102
Material Nr. (12NC)	929002997102
Numerator - Quantity Per Pack	1
EAN/UPC - Product/Case	8719514316706
Numerator - Packs per outer box	10
EAN/UPC - Case	8719514316713

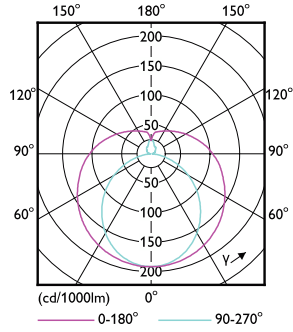
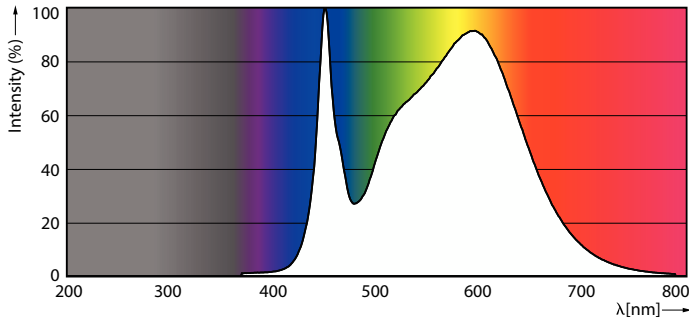
Dimensional drawing



Product	D1	D2	A1	A2	A3
MAS LEDtube VLE UN 1200mm UO 15.5W840 T8	26 mm	28 mm	1,199 mm	1,205 mm	1,213 mm

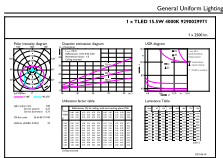
MASTER Value LEDtube Universal T8

Photometric data



Spectral Power Distribution Colour - MAS LEDtube VLE UN 1200mm UO 15.5W840 T8

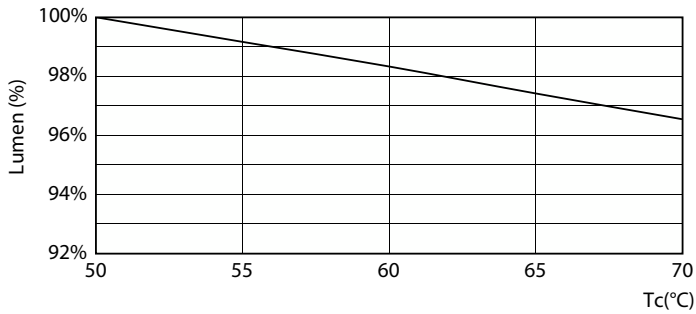
Light Distribution Diagram - MAS LEDtube VLE UN 1200mm UO 15.5W840 T8



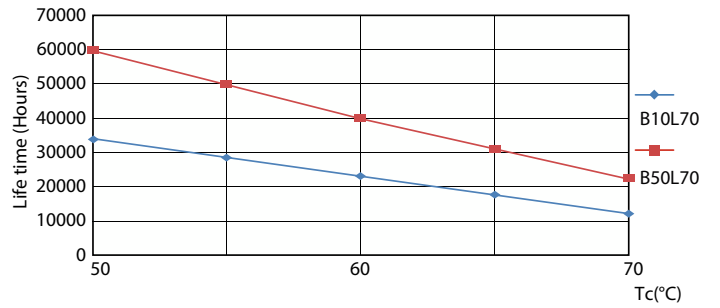
General uniform lighting
Page Lighting SV Page 1/1

General uniform lighting - MAS LEDtube VLE UN 1200mm UO 15.5W840 T8

Lifetime



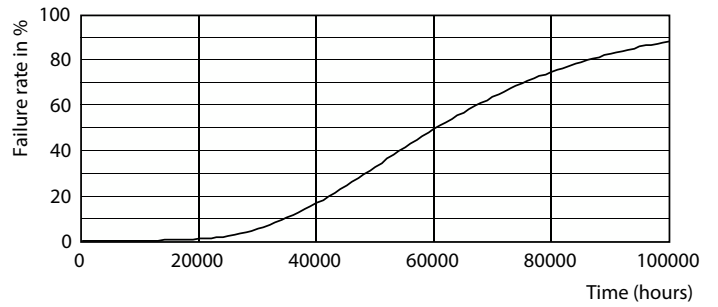
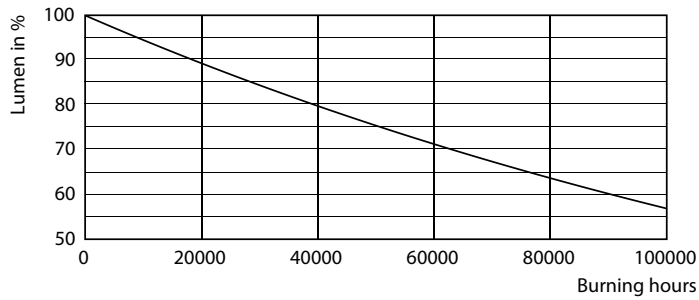
Lumen Maintenance Diagram - MAS LEDtube VLE UN 1200mm UO 15.5W840 T8



LEDtube 60K 5070 LifetimeVsTc-LED

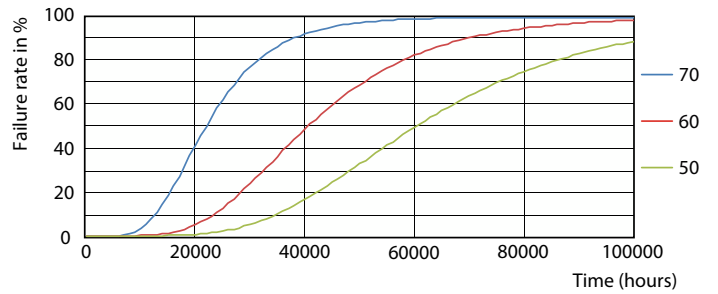
MASTER Value LEDtube Universal T8

Lifetime



Lumen Maintenance Diagram - MAS LEDtube VLE UN 1200mm UO 15.5W840 T8

Life Expectancy Diagram



LEDtube 60K 5070 FailureRate-LED

