



# MASTER LEDtube InstantFit HF T8

## MAS LEDtube HF 1200mm HO 14W830 T8

Philips MASTER LEDtube InstantFit T8 integrates a LED light source into a traditional fluorescent form factor. Its unique design creates a perfectly uniform visual appearance which cannot be distinguished from traditional fluorescent. Philips MASTER LEDtube InstantFit T8 is the ideal solution for customers who have higher light requirements and want to maximize value over lifetime. Full energy savings & longer lifetime result in attractive payback times and TCO benefits.

### Warnings and Safety

- NOTES: The overall energy efficiency and light distribution of any installation that uses these lamps are determined by the design of the installation.

### Product data

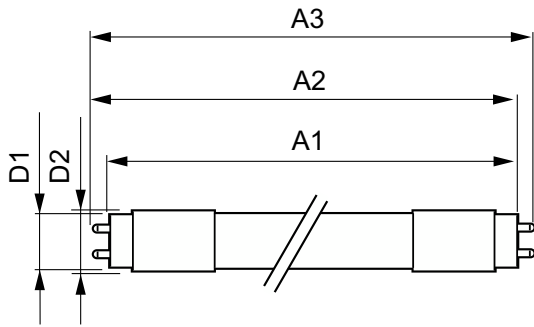
General Information		Color Designation	
Cap-Base	G13 ROT (Rotating) [Medium Bi-Pin Fluorescent]	Color Designation	White (WH)
CE mark	Yes	Correlated Color Temperature (Nom)	3000 K
EU RoHS compliant	Yes	Luminous Efficacy (rated) (Nom)	142 lm/W
Nominal lifetime	75,000 hour(s)	Color Consistency	<6
Switching Cycle	50,000	Color rendering index (CRI)	80
Lighting Technology	LED	LLMF At End Of Nominal Lifetime (Nom)	70 %
Flux measurement reference	Sphere	Operating and Electrical	
Brand	Philips	Line Frequency	20000-75000 Hz
Light Technical		Input Frequency	20000-75000 Hz
Color Code	830 [CCT of 3000K]	Power Consumption	14 W
Beam Angle (Nom)	160 degree(s)	Starting Time (Nom)	0.5 s
Luminous Flux	2,000 lumen	Warm-up time to 60% light	0.5 s
		Power Factor (Fraction)	0.9

# MASTER LEDtube InstantFit HF T8

Voltage (Nom)	30-80 V
<b>Temperature</b>	
Ambient temperature range	-20 °C to 45 °C
T-Case Maximum (Nom)	55 °C
<b>Controls and Dimming</b>	
Dimmable	Yes - Check ballast compatibility
<b>Mechanical and Housing</b>	
Bulb Finish	Frosted
Bulb Material	Plastic
Product Length	1,200 mm
Bulb Shape	Tube, double-ended
<b>Approval and Application</b>	
Energy Saving Product	Yes

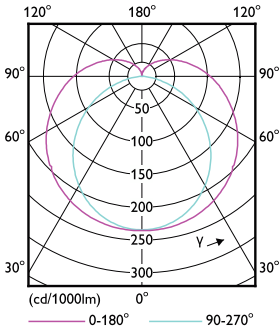
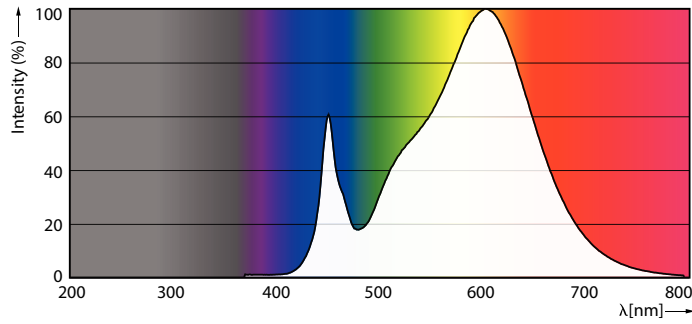
Approval Marks	RoHS compliance TUV CE marking KEMA Keur certificate
Energy Consumption kWh/1000 h	14 kWh
EPREL Registration Number	1,165,513
<b>Product Data</b>	
Full product code	871951446688300
Order product name	MAS LEDtube HF 1200mm HO 14W830 T8
Order code	929003553402
Numerator - Quantity Per Pack	1
Numerator - Packs per outer box	20
Material number (12NC)	929003553402
Net weight	0.230 kg
Full product name	MAS LEDtube HF 1200mm HO 14W830 T8
EAN/UPC - Case	8719514466890

## Dimensional drawing



Product	D1	D2	A1	A2	A3
MAS LEDtube HF 1200mm HO 14W830 T8	25.8 mm	28 mm	1,198.2 mm	1,205.3 mm	1,212.4 mm

## Photometric data

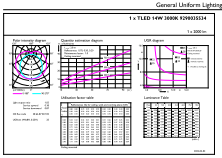


Spectral Power Distribution Colour - MAS LEDtube HF 1200mm HO 14W830 T8

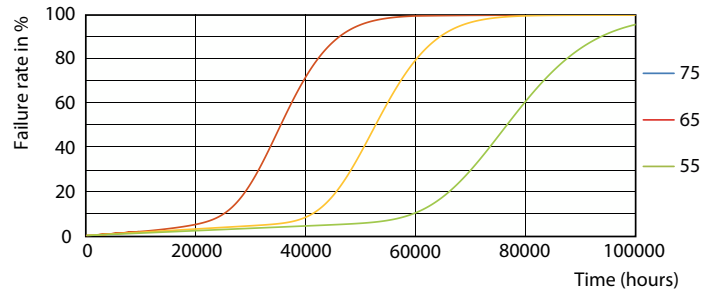
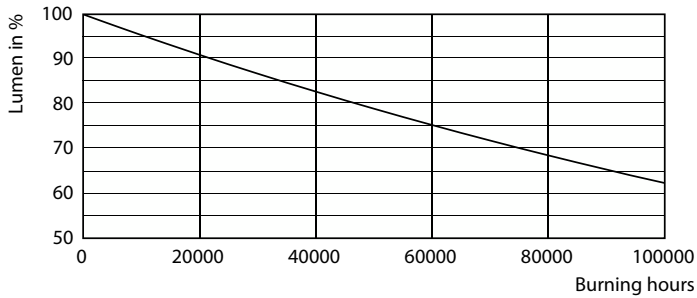
Light Distribution Diagram - MAS LEDtube HF 1200mm HO 14W830 T8

# MASTER LEDtube InstantFit HF T8

## Photometric data

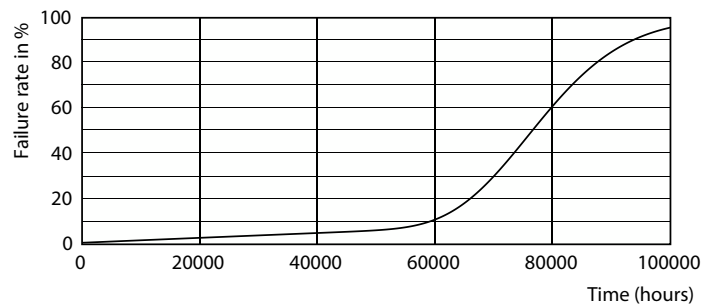
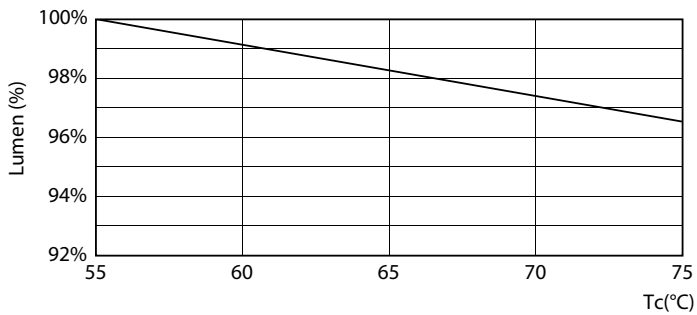


## Lifetime



Lumen Maintenance Diagram - MAS LEDtube HF 1200mm HO 14W830 T8

Life Expectancy Diagram - MAS LEDtube HF 1200mm HO 14W830 T8

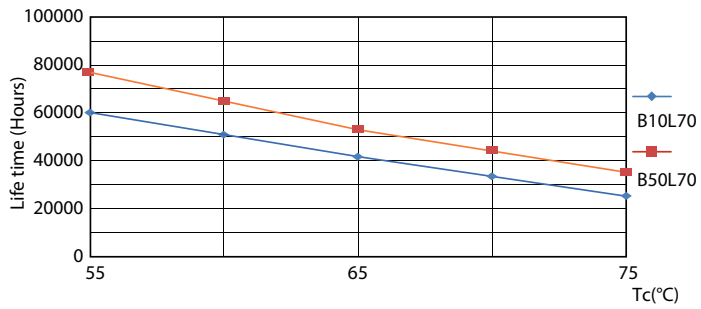


Lumen Maintenance Diagram - MAS LEDtube HF 1200mm HO 14W830 T8

Life Expectancy Diagram - MAS LEDtube HF 1200mm HO 14W830 T8

# MASTER LEDtube InstantFit HF T8

## Lifetime



Life Expectancy Diagram - MAS LEDtube HF 1200mm HO 14W830 T8

