



MASTER LEDtube T8 UltraEfficient



MAS LEDtube 1500mm UE 17.6W 865 T8 EELA

With energy prices rising and the EU's Green Deal2 continuing to fund energy efficient building renovations, many are looking into make their company's lighting more sustainable. The new Philips MASTER LEDtube Ultra Efficient T8 is a true breakthrough on the way to more sustainable lighting. It replaces your current fluorescent tube or LED tube directly and offers immediately great energy cost reduction as well as a much longer lifetime!

Product data

General Information	
Cap-Base	G13 ROT
Nominal lifetime	100,000 hour(s)
Switching Cycle	200,000
Lighting Technology	LED
Flux measurement reference	Sphere
Light Technical	
Color Code	865 [CCT of 6500K]
Beam Angle (Nom)	160 degree(s)
Luminous Flux	3,700 lm
Color Designation	Cool Daylight
Correlated Color Temperature (Nom)	6500 K
Luminous Efficacy (rated) (Nom)	210 lm/W
Color Consistency	<6
Color rendering index (CRI)	80
LLMF At End Of Nominal Lifetime (Nom)	70 %
Photobiological safety according to EN 62471	RG0

Operating and Electrical	
Input Frequency	50 to 60 Hz
Power Consumption	17.6 W
Lamp Current (Max)	93 mA
Lamp Current (Min)	73 mA
Starting Time (Nom)	1 s
Warm-up time to 60% light	1 s
Power Factor (Fraction)	0.9
Voltage (Nom)	220-240 V
Ballast Compatibility	EM/Mains
LED alternative to fluorescent lamp power	58 W
Inrush current at mains	5
Max. lamp no. on MCB B type 10A - Mains	80
Max. lamp no. on MCB B type 10A – EM ballast without Compensation Capacitor.	80
Max. lamp no. on MCB B type 10A – EM ballast with Compensation Capacitor.	10
Max. lamp no. on MCB B type 16A - Mains	130

MASTER LEDtube T8 UltraEfficient

Max. lamp no. on MCB B type 16A – EM ballast without Compensation Capacitor.	130
--	-----

Max. lamp no. on MCB B type 16A – EM ballast with Compensation Capacitor.	16
---	----

Temperature

T-Case Maximum (Nom)	45 °C
----------------------	-------

Controls and Dimming

Dimmable	No
----------	----

Mechanical and Housing

Bulb Finish	Frosted
-------------	---------

Bulb Material	Plastic
---------------	---------

Product Length	1,500 mm
----------------	----------

Bulb Shape	T8
------------	----

Net Weight (Piece)	0.285 kg
--------------------	----------

Approval and Application

Energy Efficiency Class	A
-------------------------	---

Energy Saving Product	Yes
-----------------------	-----

Approval Marks	RoHS compliance CE marking KEMA Keur certificate ENEC certificate
----------------	--

Energy Consumption kWh/1000 h	18 kWh
-------------------------------	--------

EPREL Registration Number	1655396
---------------------------	---------

CE mark	Yes
---------	-----

EU RoHS compliant	Yes
-------------------	-----

Flickering value (PstLM) - Flickering value as per EN 61000-3-3	1
---	---

Stroboscopic effect visibility measure (SVM)	0.4
--	-----

Ambient temperature range	-20 to +45 °C
---------------------------	---------------

Product Data

Order product name	MAS LEDtube 1500mm UE 17.6W 865 T8 EELA
--------------------	--

Full product name	MAS LEDtube 1500mm UE 17.6W 865 T8 EELA
-------------------	--

Full product code	872016926961300
-------------------	-----------------

Order code	929003731902
------------	--------------

Material Nr. (12NC)	929003731902
---------------------	--------------

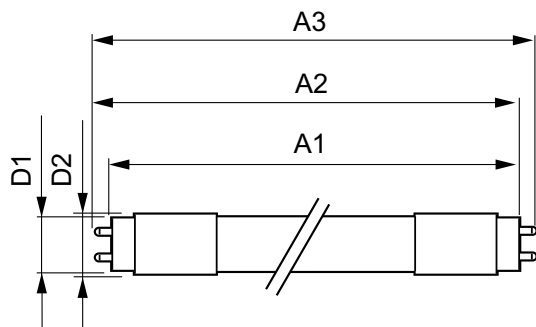
Numerator - Quantity Per Pack	1
-------------------------------	---

EAN/UPC - Product/Case	8720169269613
------------------------	---------------

Numerator - Packs per outer box	10
---------------------------------	----

EAN/UPC - Case	8720169269620
----------------	---------------

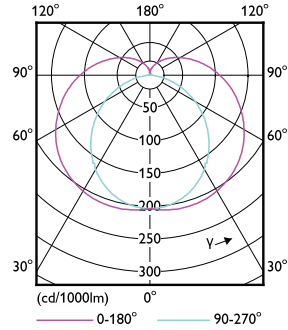
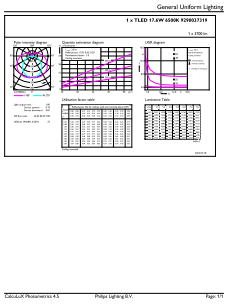
Dimensional drawing



Product	D1	D2	A1	A2	A3
MAS LEDtube 1500mm UE 17.6W 865 T8 EELA	25.8 mm	28 mm	1,498.8 mm	1,505.9 mm	1,513 mm

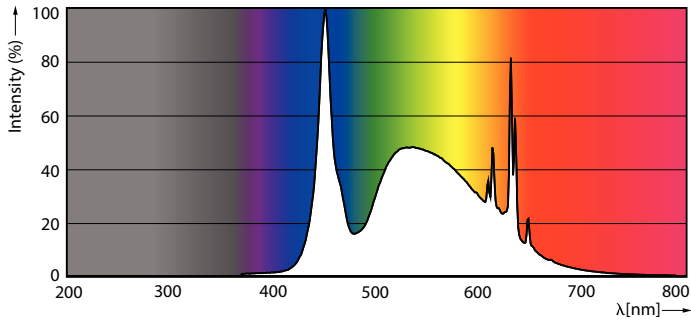
MASTER LEDtube T8 UltraEfficient

Photometric data



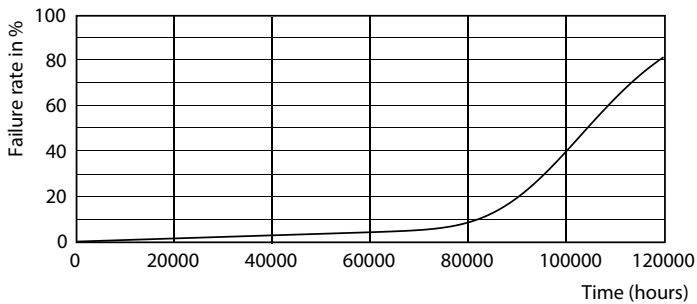
General uniform lighting - MAS LEDtube 1500mm UE 17.6W 865 T8 EELA

Light Distribution Diagram - MAS LEDtube 1500mm UE 17.6W 865 T8 EELA

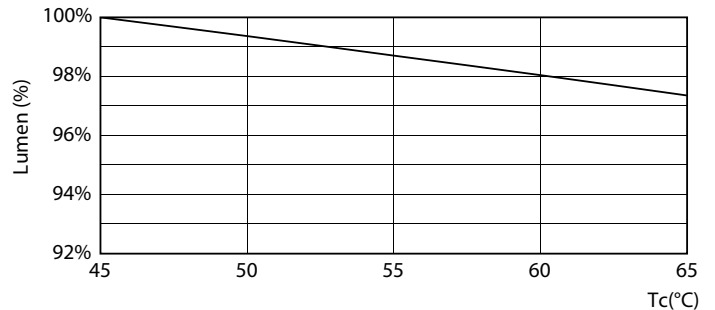


Spectral Power Distribution Colour - MAS LEDtube 1500mm UE 17.6W 865 T8 EELA

Lifetime



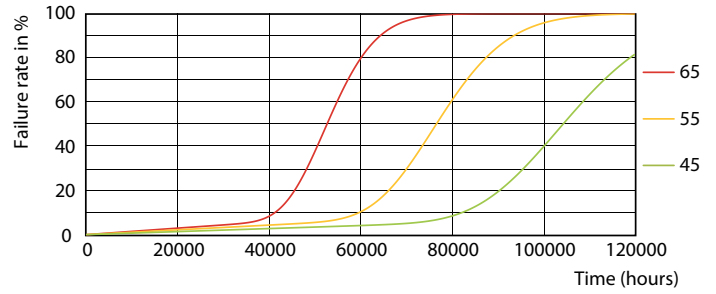
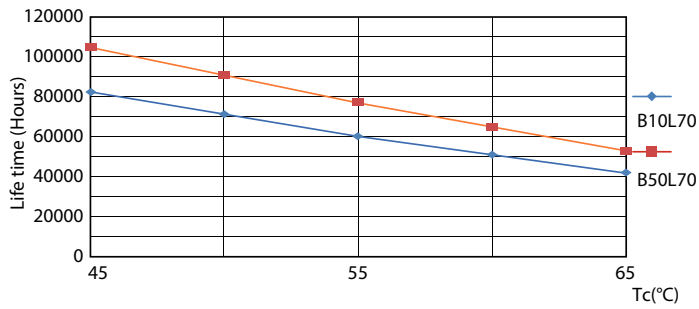
Life Expectancy Diagram



Lumen Maintenance Diagram - MAS LEDtube 1500mm UE 17.6W 865 T8 EELA

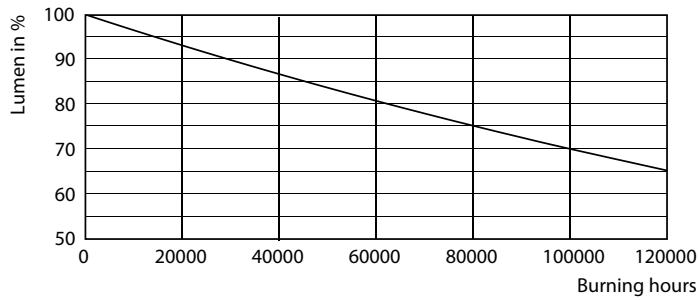
MASTER LEDtube T8 UltraEfficient

Lifetime



LifetimeVsTc

LEDtube-100K-4565-FailureRate-LED



Lumen Maintenance Diagram - MAS LEDtube 1500mm UE 17.6W 865 T8 EELA

