



MASTER LEDtube Mains T5



MAS LEDtube 900mm HE 11.5W 865 T5 EU

The new Philips Master LEDtube Mains T5 brings simplicity to your lighting project. You don't need to pay attention to the driver technology anymore. Thanks to a unique design, Philips MASTER LEDtube Mains T5 installs in luminaires operating on mains power connection. So simple to operate! . Perfectly safe, reliable & easy to install Philips MASTER LEDtube Mains T5 is the ideal alternative to standard fluorescent tubes to maximize value over lifetime with high energy saving and lower maintenance costs.

Product data

General Information		LLMF At End Of Nominal Lifetime (Nom)	
Cap-Base	G5 [G5]		70 %
Nominal lifetime	50,000 hour(s)	Flickering value (PstLM)	1
Switching Cycle	200,000	Stroboscopic effect value (SVM)	0.4
Lighting Technology	LED	Photobiological safety according to EN 62471 RGO	
Flux measurement reference	Sphere	Operating and Electrical	
CE mark	Yes	Line Frequency	50 to 60 Hz
EU RoHS compliant	Yes	Input Frequency	50 to 60 Hz
		Power Consumption	11.5 W
		Wattage Equivalent	21 W
		Starting Time (Nom)	0.5 s
		Warm-up time to 60% light	0.5 s
		Power Factor (Fraction)	0.9
		Voltage (Nom)	220-240 V
		Voltage (Nom)	220 V
		LED alternative to fluorescent lamp power	21 W
Light Technical			
Color Code	865 [CCT of 6500K]		
Beam Angle (Nom)	200 degree(s)		
Luminous Flux	1,700 lumen		
Color Designation	Cool Daylight		
Correlated Color Temperature (Nom)	6500 K		
Luminous Efficacy (rated) (Nom)	147 lm/W		
Color Consistency	<6		
Color rendering index (CRI)	80		

MASTER LEDtube Mains T5

Temperature

Ambient temperature range	-20 to +45 °C
T-Case Maximum (Nom)	45 °C

Controls and Dimming

Dimmable	No
----------	----

Mechanical and Housing

Bulb Finish	Frosted
Bulb Material	Glass
Product Length	900 mm
Bulb Shape	Tube, double-ended

Approval and Application

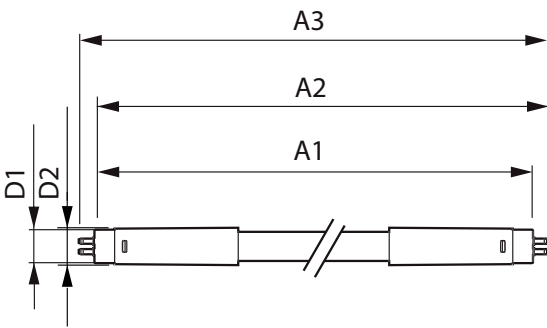
Energy Efficiency Class	D
Energy Saving Product	Yes
Approval Marks	RoHS compliance TUV CE marking KEMA Keur certificate

Energy Consumption kWh/1000 h	12 kWh
EPREL Registration Number	1587454

Product Data

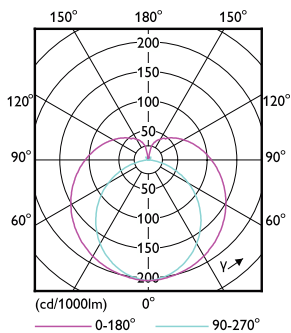
Full product code	872016927066400
Order product name	MAS LEDtube 900mm HE 11.5W 865 T5 EU
Order code	929003734202
Numerator - Quantity Per Pack	1
Numerator - Packs per outer box	10
Material Nr. (12NC)	929003734202
Full product name	MAS LEDtube 900mm HE 11.5W 865 T5 EU
EAN/UPC - Case	8720169270671
EAN/UPC - Product/Case	8720169270664

Dimensional drawing

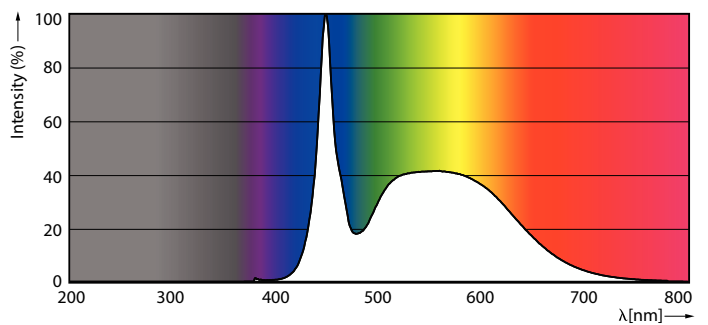


Product	D1	D2	A1	A2	A3
MAS LEDtube 900mm HE 11.5W 865 T5 EU	15.7 mm	19 mm	849 mm	856.1 mm	863.2 mm

Photometric data



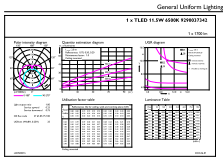
Light Distribution Diagram - MAS LEDtube 900mm HE 11.5W 865 T5 EU



Spectral Power Distribution Colour - MAS LEDtube 900mm HE 11.5W 865 T5 EU

MASTER LEDtube Mains T5

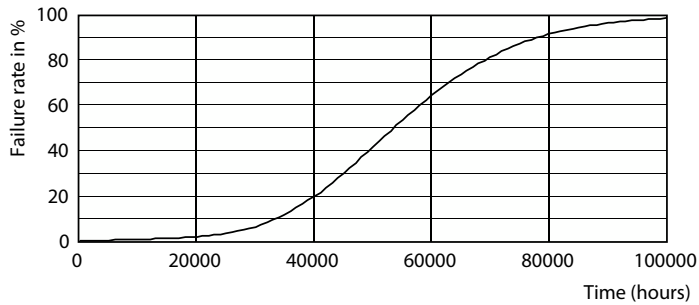
Photometric data



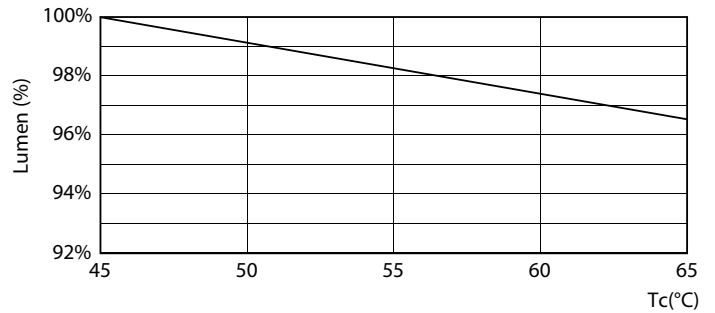
General uniform lighting - MAS LEDtube 900mm HE 11.5W 865 T5 EU

General uniform lighting - MAS LEDtube 900mm HE 11.5W 865 T5 EU

Lifetime



Life Expectancy Diagram - MAS LEDtube 900mm HE 11.5W 865 T5 EU



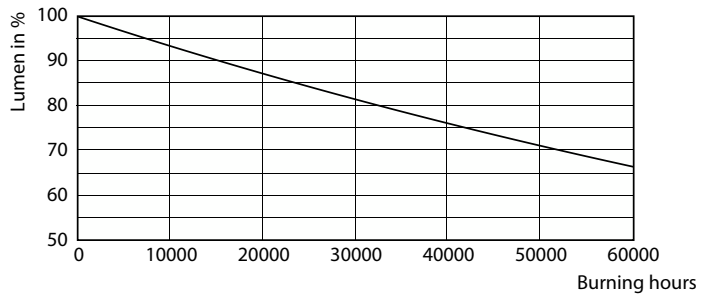
Lumen Maintenance Diagram - MAS LEDtube 900mm HE 11.5W 865 T5 EU

Life Expectancy Diagram - MAS LEDtube 900mm HE 11.5W 865 T5 EU

Life Expectancy Diagram - MAS LEDtube 900mm HE 11.5W 865 T5 EU

MASTER LEDtube Mains T5

Lifetime



Lumen Maintenance Diagram - MAS LEDtube 900mm HE 11.5W 865 T5 EU

