



CorePro LED PLL

CorePro LED PLL HF 8W 830 4P 2G11

Philips CorePro LED PLL is the ideal uplamping solution for downlights & luminaires in a wide range of general lighting applications. It integrates a LED light source into a traditional fluorescent form factor to offer superb energy savings over a lifetime that's twice as long as fluorescent alternatives.

Product data

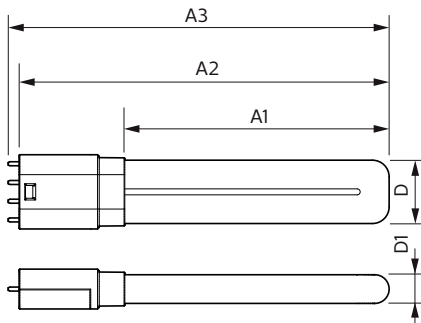
| General Information | | Power Consumption | |
|---------------------------------------|--------------------|---------------------------------|------------------------------------------------------|
| Cap-Base | 2G11 [2G11] | Power Consumption | 8 W |
| EU RoHS compliant | Yes | Starting Time (Nom) | 0.5 s |
| Nominal lifetime | 30,000 hour(s) | Warm-up time to 60% light | 0.5 s |
| Switching Cycle | 50,000 | Power Factor (Fraction) | 0.9 |
| Lighting Technology | LED | Voltage (Nom) | 20-60 V |
| Flux measurement reference | Sphere | Temperature | |
| Brand | Philips | Ambient temperature range | -20 °C to 45 °C |
| Light Technical | | T-Case Maximum (Nom) | 70 °C |
| Color Code | 830 [CCT of 3000K] | Controls and Dimming | |
| Beam Angle (Nom) | 160 degree(s) | Dimmable | No |
| Luminous Flux | 960 lumen | Mechanical and Housing | |
| Color Designation | White (WH) | Bulb Finish | Frosted |
| Correlated Color Temperature (Nom) | 3000 K | Bulb Material | Glass |
| Luminous Efficacy (rated) (Nom) | 120 lm/W | Product Length | 200 mm |
| Color Consistency | <6 | Bulb Shape | Tube, single-ended |
| Color rendering index (CRI) | 80 | Approval and Application | |
| LLMF At End Of Nominal Lifetime (Nom) | 70 % | Energy Saving Product | Yes |
| Operating and Electrical | | Approval Marks | RoHS compliance TUV CE marking KEMA Keur certificate |
| Line Frequency | 20K-80K Hz | | |
| Input Frequency | 20K-80K Hz | | |

CorePro LED PLL

| | |
|-------------------------------|-----------------------------------|
| Energy Consumption kWh/1000 h | 8 kWh |
| EPREL Registration Number | 1,370,819 |
| Product Data | |
| Full product code | 871951448676800 |
| Order product name | CorePro LED PLL HF 8W 830 4P 2G11 |
| Order code | 929003578802 |
| Numerator - Quantity Per Pack | 1 |

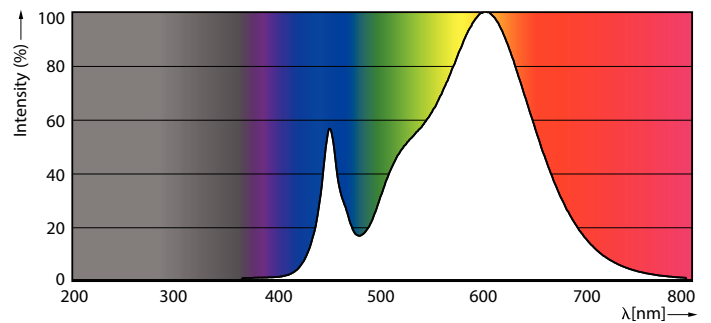
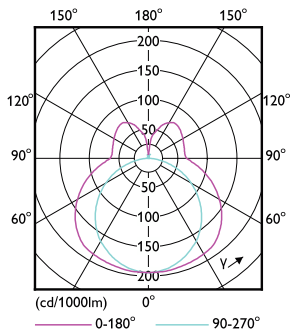
| | |
|---------------------------------|-----------------------------------|
| Numerator - Packs per outer box | 10 |
| Material number (12NC) | 929003578802 |
| Net weight | 0.085 kg |
| Full product name | CorePro LED PLL HF 8W 830 4P 2G11 |
| EAN/UPC - Case | 8719514486775 |

Dimensional drawing



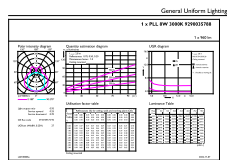
| Product | D1 | D2 | A1 | A2 | A3 |
|-----------------------------------|-------|----|--------|--------|--------|
| CorePro LED PLL HF 8W 830 4P 2G11 | 17 mm | | 155 mm | 217 mm | 224 mm |

Photometric data



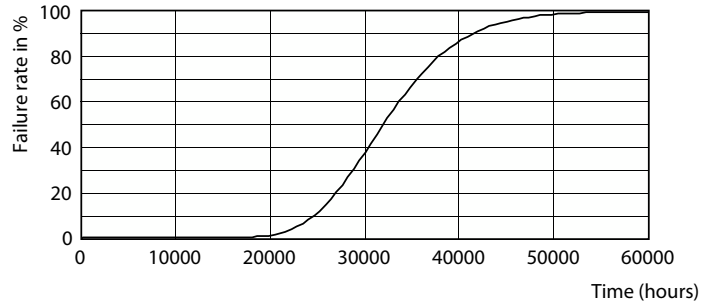
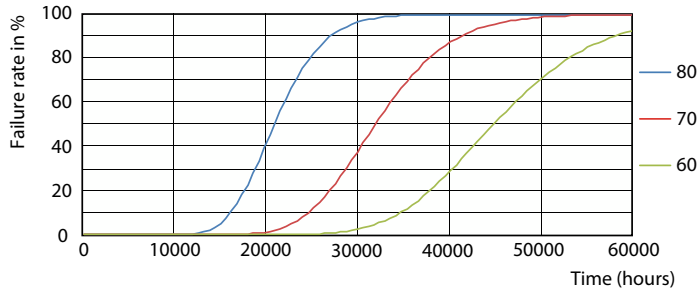
Light Distribution Diagram

Spectral Power Distribution Colour

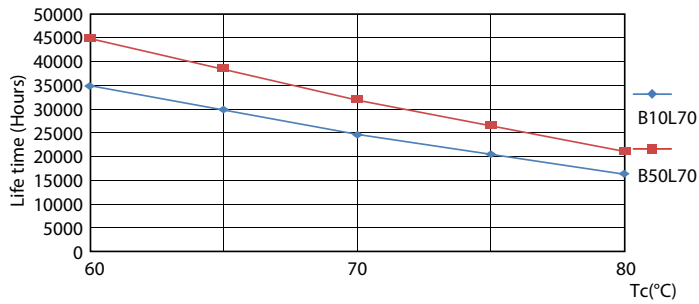


CorePro LED PLL

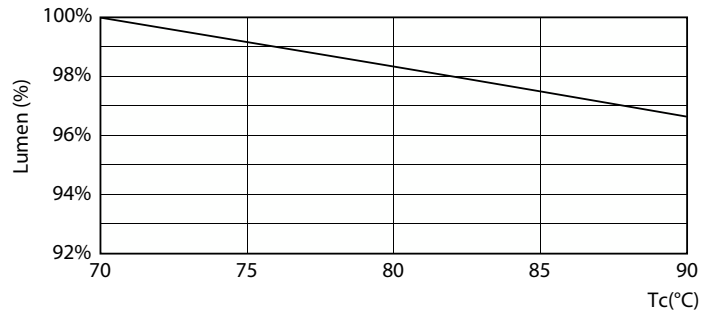
Lifetime



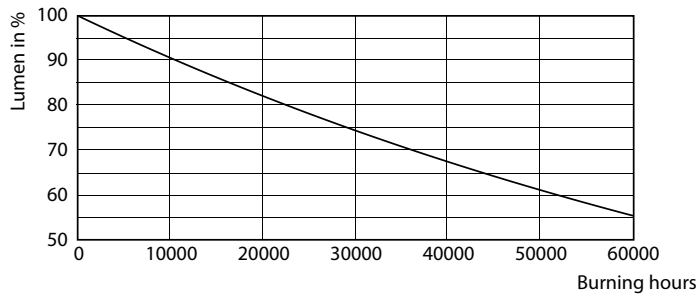
Life Expectancy Diagram



Life Expectancy Diagram - CorePro LED PLL HF 8W 830 4P 2G11



Life Expectancy Diagram



Lumen Maintenance Diagram

Lumen Maintenance Diagram - CorePro LED PLL HF 8W 830 4P 2G11

CorePro LED PLL

