

# MASTER LEDtube InstantFit HF T8

## MAS LEDtube HF 600mm HO 8W830 T8

Philips MASTER LEDtube InstantFit T8 integrates a LED light source into a traditional fluorescent form factor. Its unique design creates a perfectly uniform visual appearance which cannot be distinguished from traditional fluorescent. Philips MASTER LEDtube InstantFit T8 is the ideal solution for customers who have higher light requirements and want to maximize value over lifetime. Full energy savings & longer lifetime result in attractive payback times and TCO benefits.

### Warnings and Safety

- NOTES: The overall energy efficiency and light distribution of any installation that uses these lamps are determined by the design of the installation.

### Product data

General Information	
Cap-Base	G13 ROT (Rotating) [Medium Bi-Pin Fluorescent]
Nominal lifetime	75,000 hour(s)
Switching Cycle	50,000
Lighting Technology	LED
Flux measurement reference	Sphere
Light Technical	
Color Code	830 [CCT of 3000K]
Beam Angle (Nom)	160 degree(s)
Luminous Flux	1,000 lumen
Color Designation	White (WH)
Correlated Color Temperature (Nom)	3000 K
Luminous Efficacy (rated) (Nom)	125 lm/W

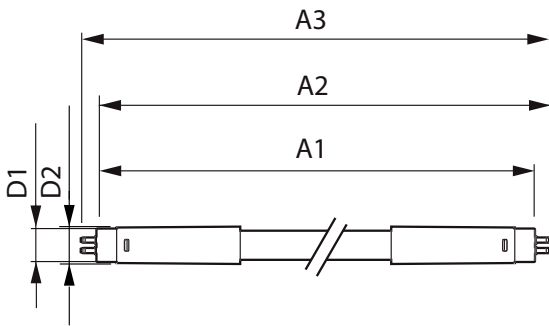
Color Consistency	<6
Color rendering index (CRI)	80
LLMF At End Of Nominal Lifetime (Nom)	70 %
Operating and Electrical	
Line Frequency	20000-120000 Hz
Input Frequency	20000-120000 Hz
Power Consumption	8 W
Starting Time (Nom)	0.5 s
Warm-up time to 60% light	0.5 s
Power Factor (Fraction)	0.9
Voltage (Nom)	20-50 V
Temperature	
Ambient temperature range	-20 °C to 45 °C

# MASTER LEDtube InstantFit HF T8

T-Case Maximum (Nom)	55 °C
<b>Controls and Dimming</b>	
Dimmable	No
<b>Mechanical and Housing</b>	
Bulb Finish	Frosted
Bulb Material	Plastic
Product Length	600 mm
Bulb Shape	Tube, double-ended
<b>Approval and Application</b>	
Energy Saving Product	Yes
Approval Marks	RoHS compliance TUV CE marking KEMA Keur certificate
Energy Consumption kWh/1000 h	8 kWh

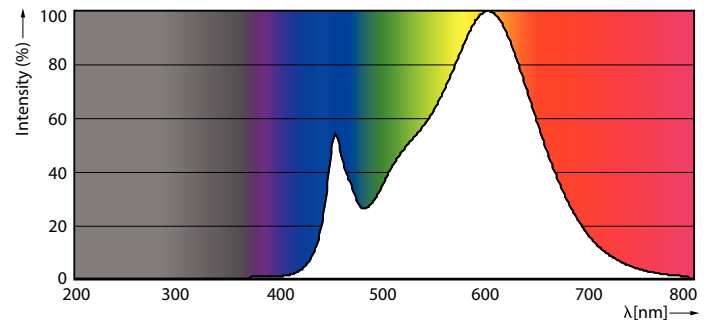
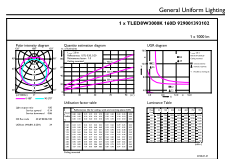
EPREL Registration Number	1,251,109
CE mark	Yes
EU RoHS compliant	Yes
<b>Product Data</b>	
Full product code	871951446640100
Order product name	MAS LEDtube HF 600mm HO 8W830 T8
Order code	929001393132
Numerator - Quantity Per Pack	1
Numerator - Packs per outer box	20
Material number (12NC)	929001393132
Net weight	0.130 kg
Full product name	MAS LEDtube HF 600mm HO 8W830 T8
EAN/UPC - Case	8719514466418

## Dimensional drawing



Product	D1	D2	A1	A2	A3
MAS LEDtube HF 600mm HO 8W830 T8	25.8 mm	28 mm	588.6 mm	595.7 mm	602.8 mm

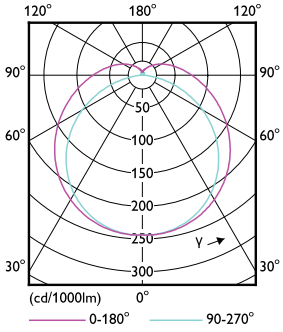
## Photometric data



Spectral Power Distribution Colour - MAS LEDtube HF 600mm HO 8W830 T8

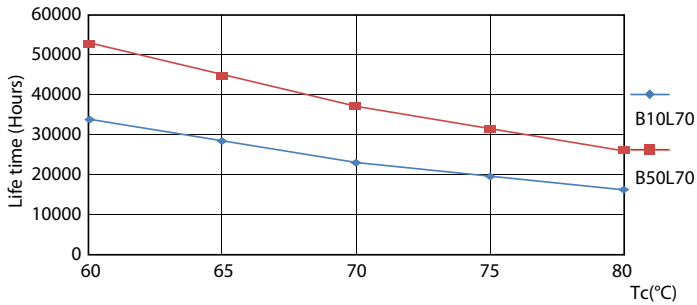
# MASTER LEDtube InstantFit HF T8

## Photometric data

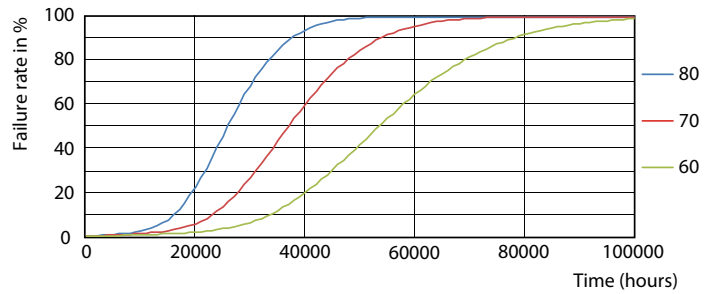


Light Distribution Diagram - MAS LEDtube HF 600mm HO 8W830 T8

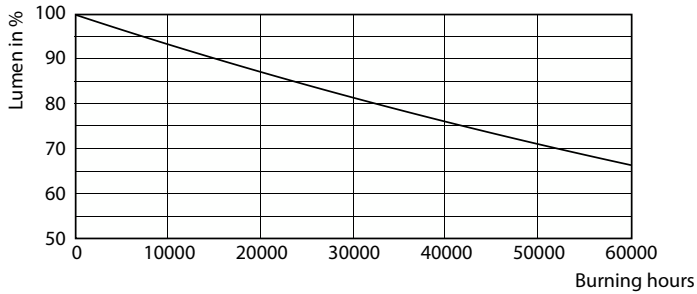
## Lifetime



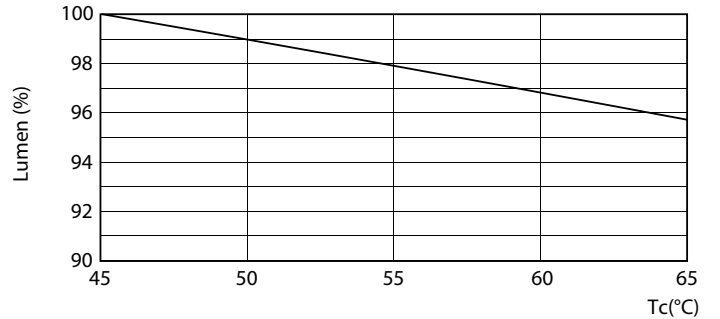
Life Expectancy Diagram - MAS LEDtube HF 600mm HO 8W830 T8



Life Expectancy Diagram - MAS LEDtube HF 600mm HO 8W830 T8



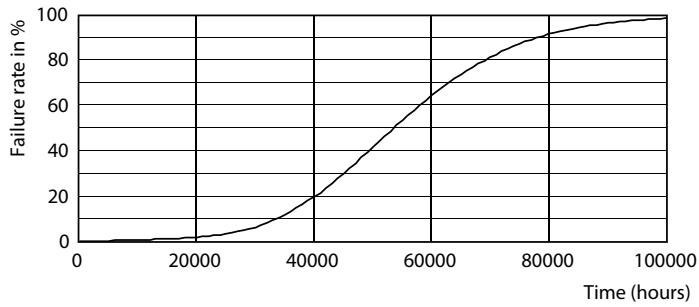
Lumen Maintenance Diagram - MAS LEDtube HF 600mm HO 8W830 T8



Lumen Maintenance Diagram - MAS LEDtube HF 600mm HO 8W830 T8

# MASTER LEDtube InstantFit HF T8

## Lifetime



Life Expectancy Diagram - MAS LEDtube HF 600mm HO 8W830 T8

