



MASTER LEDtube InstantFit HF T8

MAS LEDtube HF 1200mm UO 16W840 T8

Philips MASTER LEDtube InstantFit T8 integrates a LED light source into a traditional fluorescent form factor. Its unique design creates a perfectly uniform visual appearance which cannot be distinguished from traditional fluorescent. Philips MASTER LEDtube InstantFit T8 is the ideal solution for customers who have higher light requirements and want to maximize value over lifetime. Full energy savings & longer lifetime result in attractive payback times and TCO benefits.

Warnings and Safety

- NOTES: The overall energy efficiency and light distribution of any installation that uses these lamps are determined by the design of the installation.

Product data

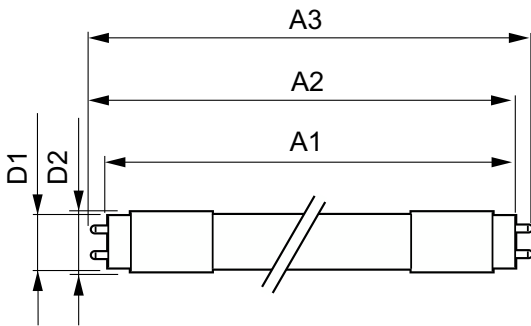
General Information		Color Consistency	
Cap-Base	G13 ROT (Rotating) [Medium Bi-Pin Fluorescent]	Color rendering index (CRI)	<6
Nominal lifetime	75,000 hour(s)	LLMF At End Of Nominal Lifetime (Nom)	70 %
Switching Cycle	50,000	Operating and Electrical	
Lighting Technology	LED	Line Frequency	20000-75000 Hz
Flux measurement reference	Sphere	Input Frequency	20000-75000 Hz
Light Technical		Power Consumption	16 W
Color Code	840 [CCT of 4000K]	Starting Time (Nom)	0.5 s
Beam Angle (Nom)	160 degree(s)	Warm-up time to 60% light	0.5 s
Luminous Flux	2,500 lumen	Power Factor (Fraction)	0.9
Color Designation	Cool White (CW)	Voltage (Nom)	30-80 V
Correlated Color Temperature (Nom)	4000 K	Temperature	
Luminous Efficacy (rated) (Nom)	156 lm/W	Ambient temperature range	-20 °C to 45 °C

MASTER LEDtube InstantFit HF T8

T-Case Maximum (Nom)	55 °C
Controls and Dimming	
Dimmable	Yes - Check ballast compatibility
Mechanical and Housing	
Bulb Finish	Frosted
Bulb Material	Plastic
Product Length	1,200 mm
Bulb Shape	Tube, double-ended
Approval and Application	
Energy Saving Product	Yes
Approval Marks	RoHS compliance TUV CE marking KEMA Keur certificate
Energy Consumption kWh/1000 h	16 kWh

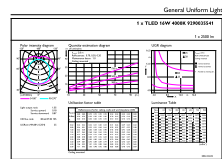
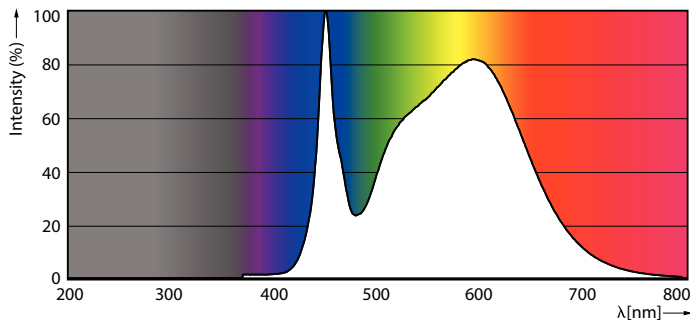
EPREL Registration Number	1,165,514
CE mark	Yes
EU RoHS compliant	Yes
Product Data	
Full product code	871951446696800
Order product name	MAS LEDtube HF 1200mm UO 16W840 T8
Order code	929003554102
Numerator - Quantity Per Pack	1
Numerator - Packs per outer box	20
Material number (12NC)	929003554102
Net weight	0.230 kg
Full product name	MAS LEDtube HF 1200mm UO 16W840 T8
EAN/UPC - Case	8719514466975

Dimensional drawing



Product	D1	D2	A1	A2	A3
MAS LEDtube HF 1200mm UO 16W840 T8	25.8 mm	28 mm	1,198.2 mm	1,205.3 mm	1,212.4 mm

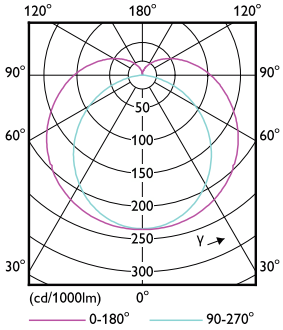
Photometric data



Spectral Power Distribution Colour - MAS LEDtube HF 1200mm UO 16W840 T8

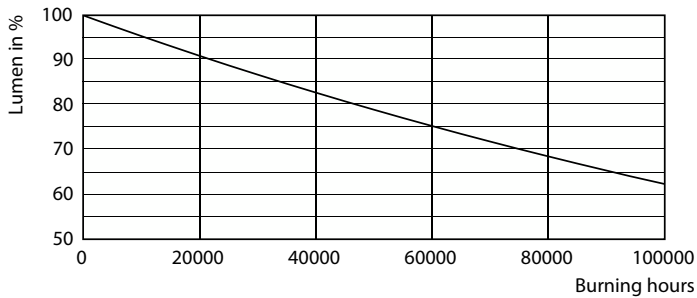
MASTER LEDtube InstantFit HF T8

Photometric data

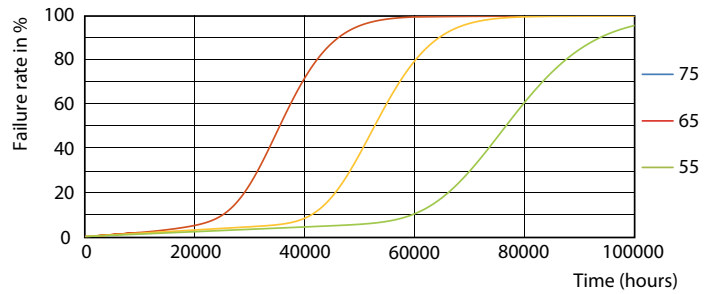


Light Distribution Diagram - MAS LEDtube HF 1200mm UO 16W840 T8

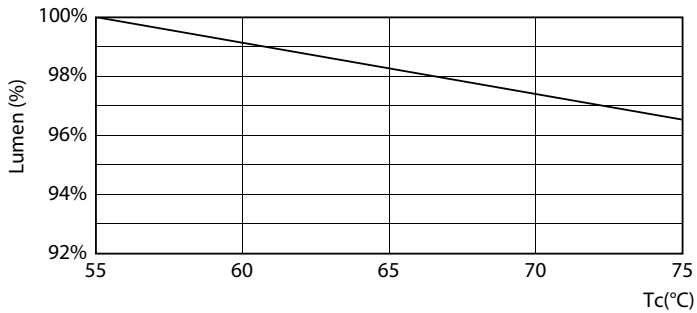
Lifetime



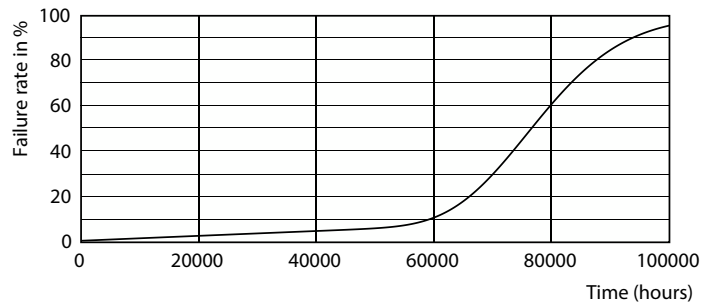
Lumen Maintenance Diagram - MAS LEDtube HF 1200mm UO 16W840 T8



Life Expectancy Diagram - MAS LEDtube HF 1200mm UO 16W840 T8



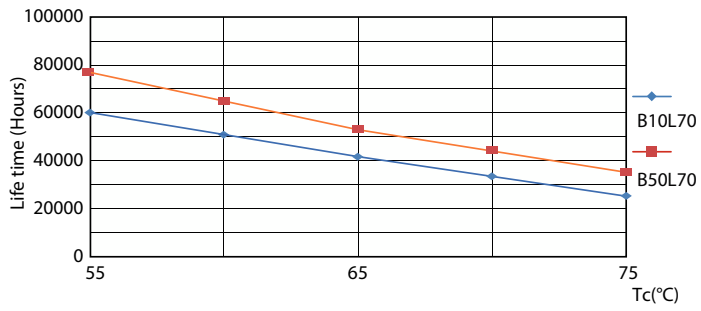
Lumen Maintenance Diagram - MAS LEDtube HF 1200mm UO 16W840 T8



Life Expectancy Diagram - MAS LEDtube HF 1200mm UO 16W840 T8

MASTER LEDtube InstantFit HF T8

Lifetime



Life Expectancy Diagram - MAS LEDtube HF 1200mm UO 16W840 T8

