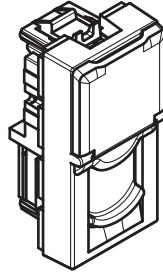


Classia
RJ11 sockets

RW4258RJ11 - RA4258RJ11 - RG4258RJ11



Use

RJ 11 connectors for data/telephone transmission.
Specially designed for data transmission and telephone communication.
These connectors are very widely used for computer networks with 4-pair cables.

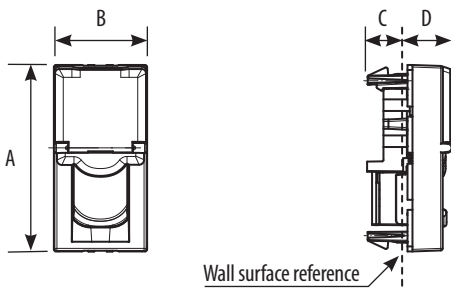
Range

Designation	Item
RJ11 sockets	<input type="checkbox"/> RW4258RJ11
	<input type="checkbox"/> RA4258RJ11
	<input type="checkbox"/> RG4258RJ11

Color code:

White colour Aluminum colour Black colour

Overall dimensions (mm)

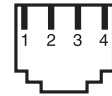


	A	B	C	D
..4258RJ11	45	22.5	8.5	12.1

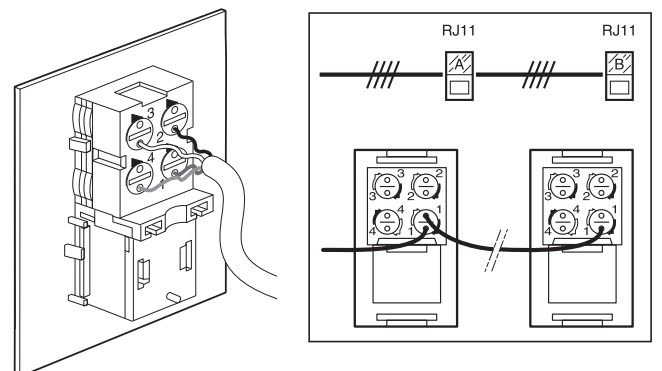
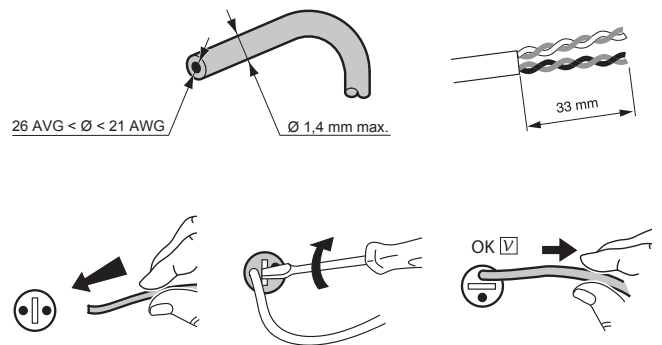
Connection

Tool-free connection.
Takes the following plugs:
RJ 11 - 4 contacts

- EIA - TIA 568 A and B dual colour code on terminals:
- UTP 8 contacts
- FTP 9 contacts
- STP 9 contacts with 360° shielding



The RJ11 connectors are equipped with a locking nut.
They do not require a special tool and can be re-wired if a mistake is made.



Technical characteristics

- Protection index

(considering a complete installation, including cover plate)
Penetration by solid bodies/liquid: IP40

- Mechanical characteristics

Impact test: IK 04

- Material characteristics

Contacts: gold/nickel, thickness of gold > 0.8 µm minimum
Metal parts: bronze, nickel, platinum, gold
Polycarbonate PBT
For the STP products the body and the spreader are made of metal alloy with copper/nickel coating.
Material: ABS for cover plates
Halogen-free
UV resistant
Self-extinguishing:
850°C/30 s for insulating parts holding live parts in place
650°C/30 s for other parts made of insulating materials

- Electrical characteristics

Breakdown voltage ≥ 1000 V
Contact resistance ≤ 20 MΩ
Insulation resistance ≥ 500 MΩ at 100 VDC
Connector tested and guaranteed under POE signal stress, standard IEEE 802.3af and POE+, draft standard 802.3at, up to 2500 load connections/disconnections.
Tests are carried out with 2 simultaneous POE+ circuits for a minimum total power of 50 W.

- Climatic characteristics

Storage temperature: -10° C to +70° C
Use temperature: -5° C to +35° C

Cleaning

Clean the surface with a cloth.
Do not use acetone, tar-removing cleaning agents or trichloroethylene.
Caution: Always test before using special cleaning products.

Standards and approvals

Compliance with standards EN 60603-7.
Refer to e.catalogue.