



CoreLine Projector gen2

ST151T LED30S/930 MB BK

- 25 degree(s) - 930 warm white - Power supply unit (ON/OFF)

The well-known CoreLine Projector with its latest generation has undergone important design and performance improvement, raising the bar even higher and setting a new standard for track projectors used in retail and hospitality applications.

Warnings and Safety

- The luminaire should be mounted outside of arm's reach
- The luminaire should be installed by a qualified electrician and wired in accordance with the latest IEE electrical regulations or the national requirements

Product data

General Information		Stroboscopic effect value (SVM)	
Light source replaceable	No	Stroboscopic effect value (SVM)	1.6
Number of gear units	1 unit	Beam angle of light source	25 degree(s)
Driver included	Yes	Light source color	930 warm white
Lighting Technology	LED	Optic type	Medium beam
Value ladder	Value	Luminaire light beam spread	25°
		Unified glare rating CEN	19
Light Technical		Operating and Electrical	
Luminous Flux	3,000 lumen	Input Voltage	220 to 240 V
Saturated Red (R9)	>50	Line Frequency	50 or 60 Hz
Correlated Color Temperature (Nom)	3000 K	Input Frequency	50 or 60 Hz
Luminous Efficacy (rated) (Nom)	100 lm/W	Initial CLO power consumption	30 W
Color rendering index (CRI)	>90	Average CLO power consumption	30 W
Flickering value (PstLM)	1	Power Consumption	30 W

CoreLine Projector gen2

Inrush current	43.8 A
Inrush time	0.0115 ms
Power Factor (Fraction)	0.9
Connection	3C Track
Cable	-
Number of products on MCB of 16 A type B	30

Temperature

Ambient temperature range	-20 to +40 °C
---------------------------	---------------

Controls and Dimming

Dimmable	No
Driver/power unit/transformer	Power supply unit (ON/OFF)
Control interface	-
Constant light output	No

Mechanical and Housing

Housing Material	Aluminum
Reflector material	-
Optic material	Polycarbonate
Optical cover/lens material	Polycarbonate
Fixation material	-
Housing Color	Black
Optical cover/lens finish	-
Overall length	207 mm
Overall width	87 mm
Overall height	125 mm
Overall diameter	80 mm
Dimensions (Height x Width x Depth)	125 x 87 x 207 mm

Approval and Application

Ingress protection code	IP20 [Finger-protected]
Mech. impact protection code	IK03 [0.3 J]
Sustainability rating	-
Protection class IEC	Safety class I
Glow-wire test	Temperature 650 °C, duration 30 s
Flammability mark	-

CE mark	Yes
ENEC mark	ENEC mark
Warranty period	5 years
Photobiological risk	Photobiological risk group 0 @200mm to EN62778
Photobiological risk specification	0.2 m
EU RoHS compliant	Yes

Initial Performance (IEC Compliant)

Luminous flux tolerance	+/-10%
Initial chromaticity	(0.4355, 0.4045) SDCM <4
Power consumption tolerance	+/-10%

Over Time Performance (IEC Compliant)

Control gear failure rate at median useful life 50000 h	0.05 %
Lumen maintenance at median useful life* 50000 h	L70

Application Conditions

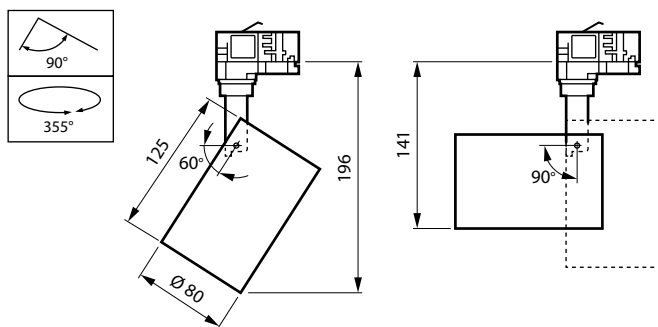
Performance ambient temperature Tq	25 °C
Maximum dim level	Not applicable
Suitable for random switching	No

Product Data

Full product code	871951452855099
Order product name	ST151T LED30S/930 MB BK
Order code	911401846582
Numerator - Quantity Per Pack	1
Numerator - Packs per outer box	10
Material number (12NC)	911401846582
Full product name	ST151T LED30S/930 MB BK
EAN/UPC - Case	8719514528635



Dimensional drawing



CoreLine Projector gen2

