



MASTER Value LEDtube T8



MAS LEDtube VLE 1200mm UO 15.5W 840 T8

A high-performance LED solution, the professional MASTER Value LED tube is ideal for replacing T8 fluorescent lamps using EM ballast or installing directly on the mains. This product provides an optimal combination of value and performance – for use in all general lighting, office, industry, retail, and hospitality applications. The unique design of this LED T8 tube light offers wide compatibility, safety and fast installation, as well as instant energy savings.

Product data

| General Information | |
|--|---------------------------------|
| Cap-Base | G13 [Medium Bi-Pin Fluorescent] |
| Nominal lifetime | 60,000 hour(s) |
| Switching Cycle | 200,000 |
| Lighting Technology | LED |
| Flux measurement reference | Sphere |
| Light Technical | |
| Color Code | 840 [CCT of 4000K] |
| Beam Angle (Nom) | 190 degree(s) |
| Luminous Flux | 2,500 lm |
| Color Designation | Cool White (CW) |
| Correlated Color Temperature (Nom) | 4000 K |
| Luminous Efficacy (rated) (Nom) | 161 lm/W |
| Color Consistency | <6 |
| Color rendering index (CRI) | 80 |
| LLMF At End Of Nominal Lifetime (Nom) | 70 % |
| Photobiological safety according to EN 62471 | RG0 |

| Operating and Electrical | |
|--|-------------|
| Line Frequency | 50 to 60 Hz |
| Input Frequency | 50 to 60 Hz |
| Power Consumption | 15.5 W |
| Lamp Current (Max) | 73 mA |
| Lamp Current (Min) | 67 mA |
| Starting Time (Nom) | 0.5 s |
| Warm-up time to 60% light | 0.5 s |
| Power Factor (Fraction) | 0.9 |
| Voltage (Nom) | 220-240 V |
| Ballast Compatibility | EM/Mains |
| LED alternative to fluorescent lamp power | 36 W |
| Inrush current at mains | 8.2 |
| Max. lamp no. on MCB B type 10A - Mains | 90 |
| Max. lamp no. on MCB B type 10A – EM ballast without Compensation Capacitor. | 95 |
| Max. lamp no. on MCB B type 10A – EM ballast with Compensation Capacitor. | 15 |
| Max. lamp no. on MCB B type 16A - Mains | 145 |

MASTER Value LEDtube T8

| | |
|--|-----|
| Max. lamp no. on MCB B type 16A – EM ballast without Compensation Capacitor. | 150 |
| Max. lamp no. on MCB B type 16A – EM ballast with Compensation Capacitor. | 25 |

Temperature

| | |
|----------------------|-------|
| T-Case Maximum (Nom) | 60 °C |
|----------------------|-------|

Controls and Dimming

| | |
|----------|----|
| Dimmable | No |
|----------|----|

Mechanical and Housing

| | |
|--------------------|----------|
| Bulb Finish | Frosted |
| Bulb Material | Glass |
| Product Length | 1,200 mm |
| Bulb Shape | T8 |
| Net Weight (Piece) | 0.215 kg |

Approval and Application

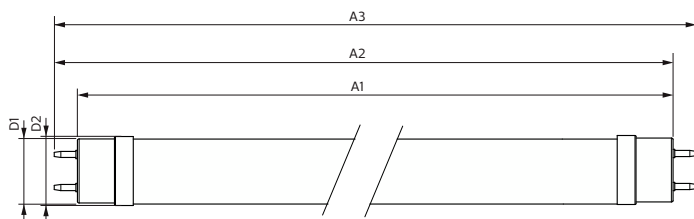
| | |
|-------------------------|---|
| Energy Efficiency Class | C |
| Energy Saving Product | Yes |
| Approval Marks | RoHS compliance TUV CE marking KEMA Keur certificate |

| | |
|---|-----------------|
| Energy Consumption kWh/1000 h | 16 kWh |
| EPREL Registration Number | 1095872 |
| CE mark | Yes |
| EU RoHS compliant | Yes |
| Flickering value (PstLM) - Flickering value as per EN 61000-3-3 | 1 |
| Stroboscopic effect visibility measure (SVM) | 0.4 |
| Ambient temperature range | -20 °C to 45 °C |

Product Data

| | |
|---------------------------------|---|
| Order product name | MAS LEDtube VLE 1200mm UO 15.5W 840 T8 |
| Full product name | MAS LEDtube VLE 1200mm UO 15.5W 840 T8 |
| Full product code | 871951431682900 |
| Order code | 929002997702 |
| Material Nr. (12NC) | 929002997702 |
| Numerator - Quantity Per Pack | 1 |
| EAN/UPC - Product/Case | 8719514316829 |
| Numerator - Packs per outer box | 10 |
| EAN/UPC - Case | 8719514316836 |

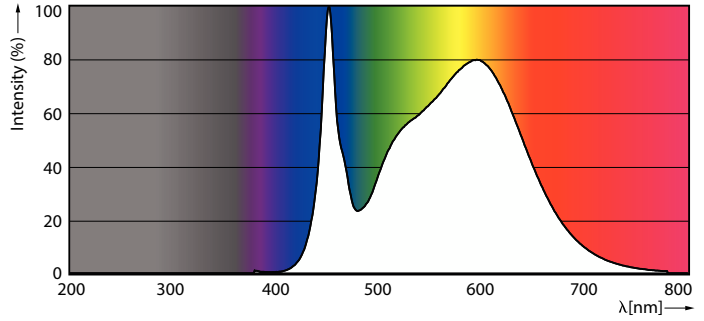
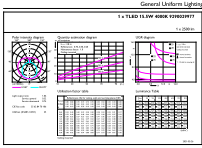
Dimensional drawing



| Product | D1 | D2 | A1 | A2 | A3 |
|---------------------------|---------|-------|------------|------------|------------|
| MAS LEDtube VLE 1200mm UO | 25.8 mm | 28 mm | 1,198.2 mm | 1,205.3 mm | 1,212.4 mm |
| 15.5W 840 T8 | | | | | |

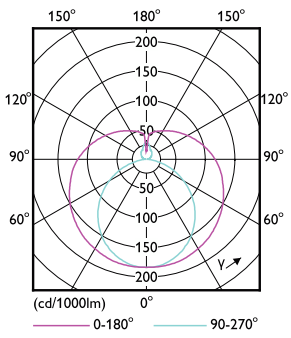
MASTER Value LEDtube T8

Photometric data



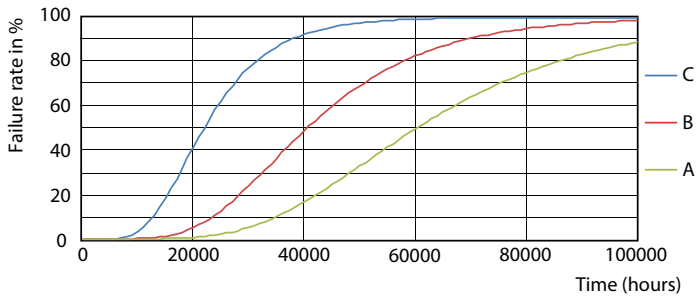
General uniform lighting - MAS LEDtube VLE 1200mm UO 15.5W 840 T8

Spectral Power Distribution Colour - MAS LEDtube VLE 1200mm UO 15.5W 840 T8

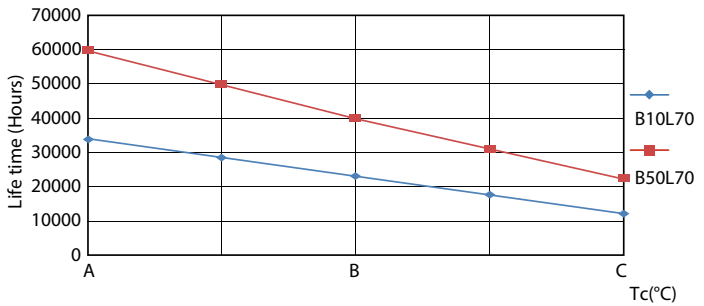


Light Distribution Diagram - MAS LEDtube VLE 1200mm UO 15.5W 840 T8

Lifetime



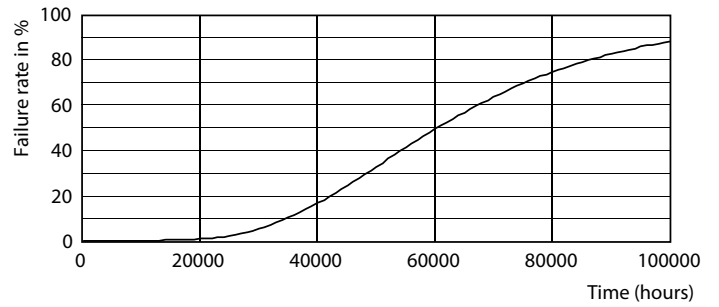
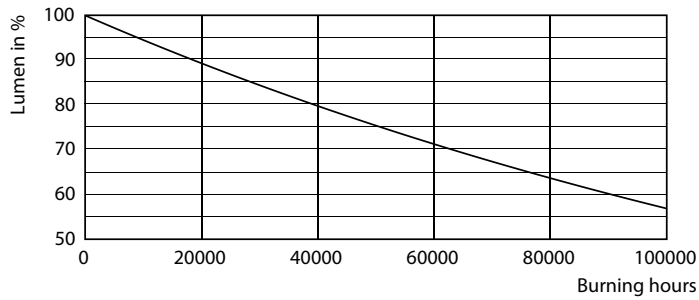
FailureRate



LifetimeVsTc

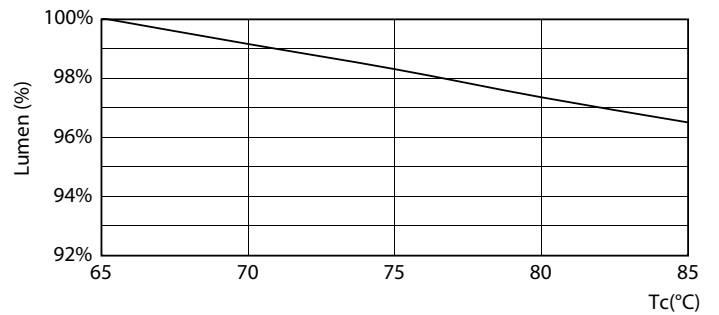
MASTER Value LEDtube T8

Lifetime



Lumen Maintenance Diagram - MAS LEDtube VLE 1200mm UO 15.5W 840 T8

Life Expectancy Diagram



Lumen Maintenance Diagram - MAS LEDtube VLE 1200mm UO 15.5W 840 T8

