



MasterConnect LEDtube EM/mains T8

MC LEDtube IA 1200mm UO 16W865 T8

Introducing MasterConnect LEDtubes - smart retrofit LED T8 lamps that give you an easy and seamless way to upgrade to connected lighting. Simply set up with an intuitive app and MasterConnect LED tube lighting can be programmed to maximize energy savings, while providing wireless and automated light for your comfort and convenience. What's more, it is fully scalable and upgradable. If you want to enjoy additional benefits such as remote control or a management dashboard, you can simply keep the lamps you currently have installed and add a gateway to experience all the advantages of a cloud-based system. There's no better way to take lighting solutions to the next level.

Product data

General Information	
Cap-Base	G13 [Medium Bi-Pin Fluorescent]
Nominal lifetime	60,000 hour(s)
Switching Cycle	200,000
Lighting Technology	LED
Flux measurement reference	Sphere

Light Technical	
Color Code	865 [CCT of 6500K]
Beam Angle (Nom)	160 degree(s)
Luminous Flux	2,500 lumen
Color Designation	Cool Daylight
Correlated Color Temperature (Nom)	6500 K
Luminous Efficacy (rated) (Nom)	156 lm/W
Color Consistency	<6
Color rendering index (CRI)	83

LLMF At End Of Nominal Lifetime (Nom) 70 %	
--	--

Operating and Electrical	
Line Frequency	50 to 60 Hz
Input Frequency	50 to 60 Hz
Power Consumption	16 W
Starting Time (Nom)	0.5 s
Warm-up time to 60% light	0.5 s
Power Factor (Fraction)	0.9
Voltage (Nom)	220-240 V

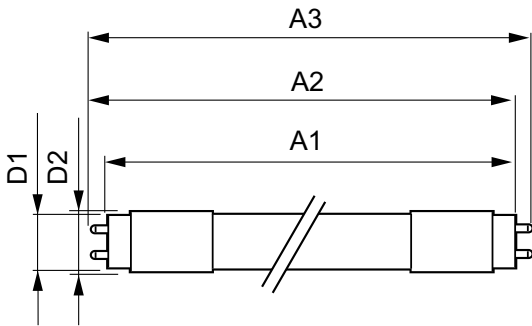
Temperature	
Ambient temperature range	-20 °C to 45 °C
T-Case Maximum (Nom)	50 °C

MasterConnect LEDtube EM/mains T8

Controls and Dimming	
Dimmable	Wireless Dim
Mechanical and Housing	
Product Length	1,200 mm
Bulb Shape	Tube, double-ended
Approval and Application	
Energy Saving Product	Yes
Approval Marks	RoHS compliance TUV CE marking KEMA Keur certificate
Energy Consumption kWh/1000 h	16 kWh
EPREL Registration Number	406,201
CE mark	Yes

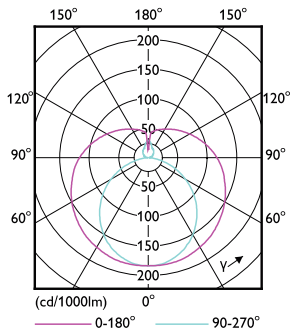
EU RoHS compliant	Yes
Product Data	
Full product code	871869966972000
Order product name	MC LEDtube IA 1200mm UO 16W865 T8
Order code	929002210502
Numerator - Quantity Per Pack	1
Numerator - Packs per outer box	10
Material number (12NC)	929002210502
Full product name	MC LEDtube IA 1200mm UO 16W865 T8
EAN/UPC - Case	8718699669737

Dimensional drawing

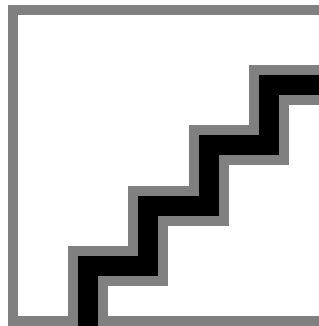


Product	D1	D2	A1	A2	A3
MC LEDtube IA 1200mm UO 16W865 T8	25.8 mm	28 mm	1,198.2 mm	1,205.3 mm	1,212.4 mm

Photometric data



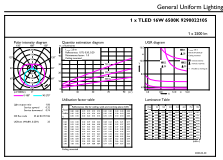
Light Distribution Diagram - MC LEDtube IA 1200mm UO 16W865 T8



Spectral Power Distribution Colour - MC LEDtube IA 1200mm UO 16W865 T8

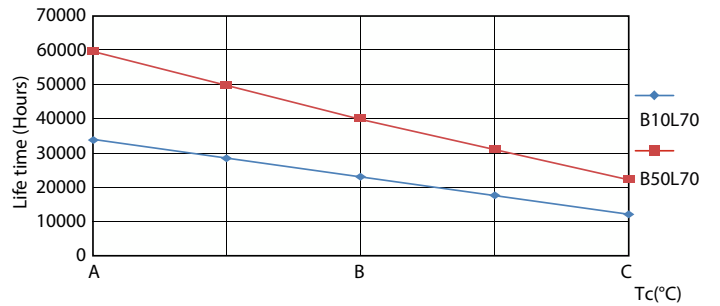
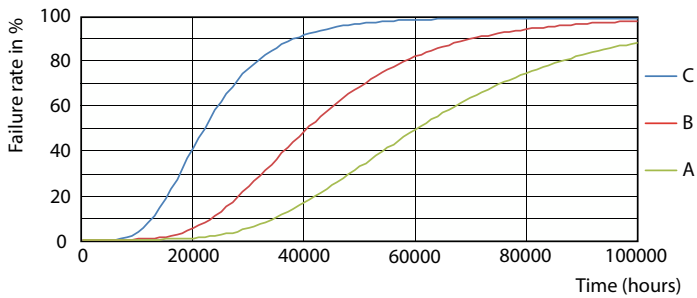
MasterConnect LEDtube EM/mains T8

Photometric data



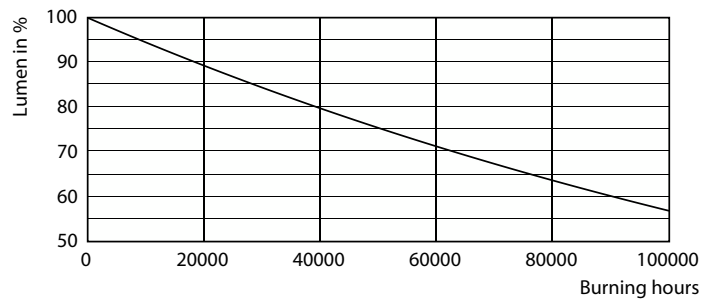
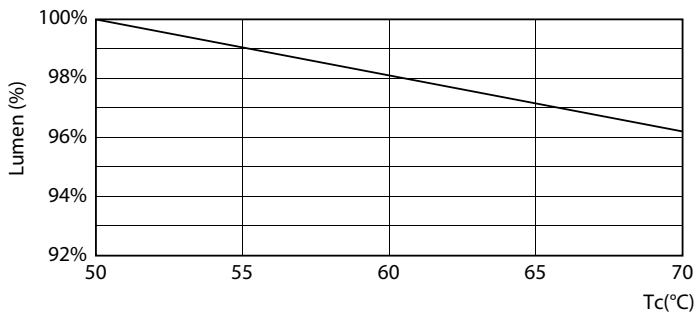
© 2023 Philips Lighting B.V. Page 11

Lifetime



Life Expectancy Diagram - MC LEDtube IA 1200mm UO 16W865 T8

Life Expectancy Diagram - MC LEDtube IA 1200mm UO 16W865 T8

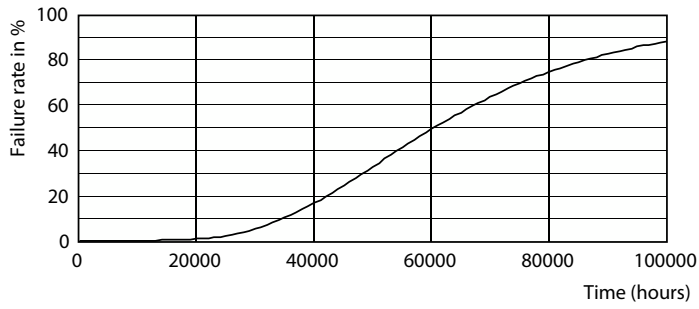


Lumen Maintenance Diagram - MC LEDtube IA 1200mm UO 16W865 T8

Lumen Maintenance Diagram - MC LEDtube IA 1200mm UO 16W865 T8

MasterConnect LEDtube EM/mains T8

Lifetime



Life Expectancy Diagram - MC LEDtube IA 1200mm UO 16W865 T8

